

EuroGeographics Strategy – revision June 2002

C. LUZET¹

Quid EuroGeographics?

- The association of the European Mapping National Agencies (~40 countries)
- The merger of CERCO and MEGRIN, born on 1st January 2001
www.eurogeographics.org
- 20 years of experience in the service of a pan-European Spatial Data Infrastructure
 - policies and strategies
 - products and services

Membership



“(even) more than financial support, it is the members’ commitment to participate to our projects that is the key for success”

Jorje Teixeira Pinto)

A decentralised organisation (1)



A decentralised organisation (2)

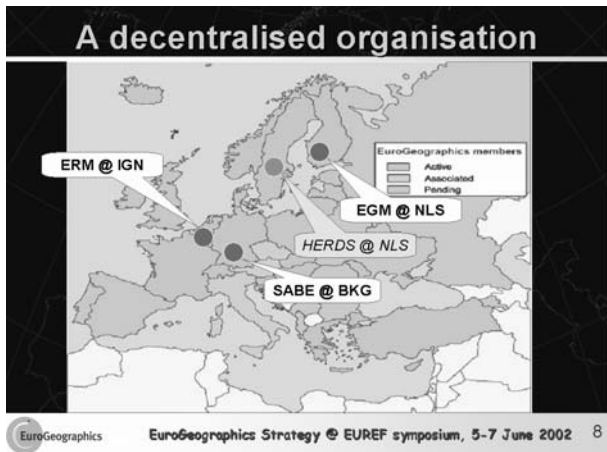


A decentralised organisation (3)

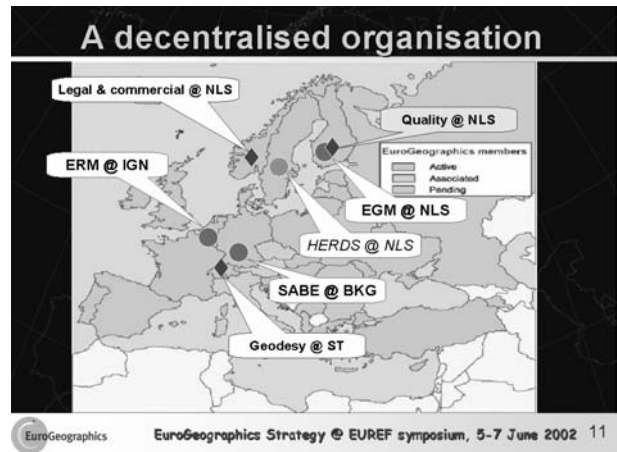


¹ Claude Luzet, EuroGeographics, 6-8, Avenue Blaise Pascal, Cité Descartes, Champs-sur-Marne, F - 77455 Marne-la-Vallée Cedex 2, France, Tel: +33 1 64 15 32 40, Fax: +33 1 64 15 32 19, E-mail: claudeluzet@eurogeographics.org

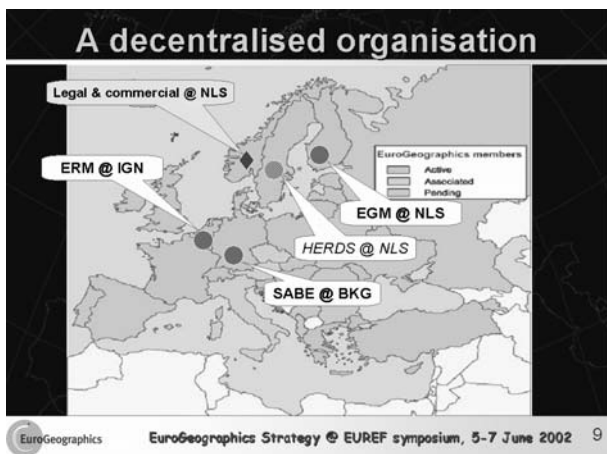
A decentralised organisation (4)



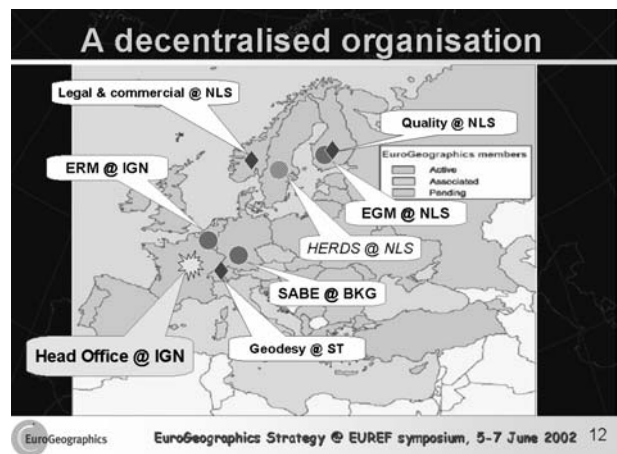
A decentralised organisation (7)



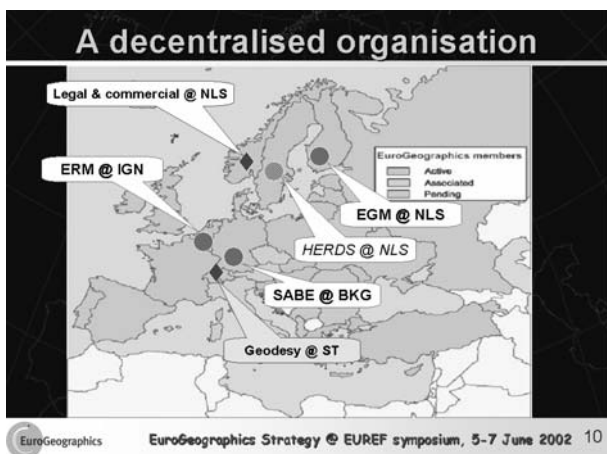
A decentralised organisation (5)



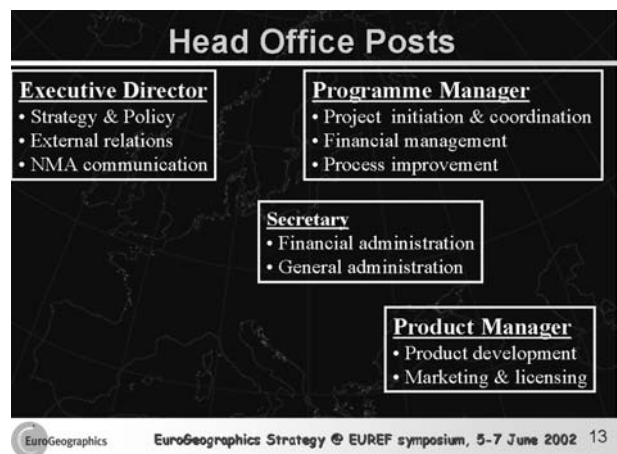
A decentralised organisation (8)



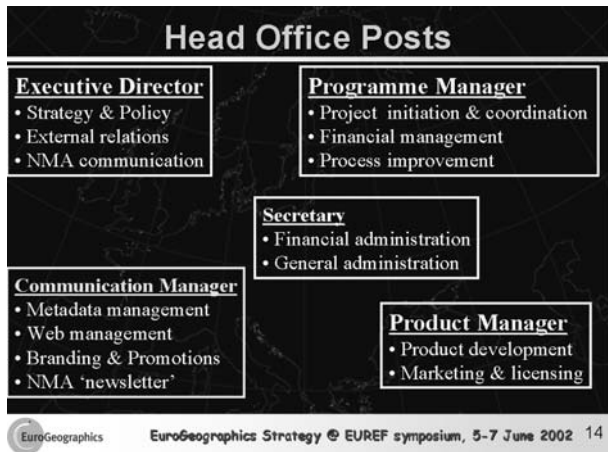
A decentralised organisation (6)



Head Office Posts (1)



Head Office Posts (1)



Vision

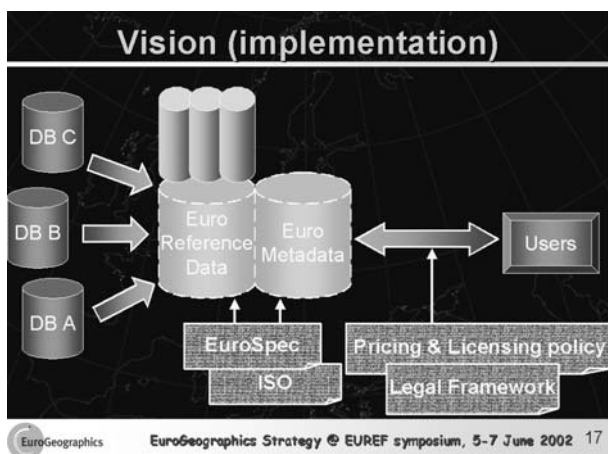
Achieve interoperability of European mapping (and other GI) data within 10 years

Vision (for the user)

Easy to identify what data is available

- Confident that the data:
 - conforms to known specifications and meets defined quality levels
 - is maintained at the most appropriate level
- The terms & conditions under which the data can be used are clear and do not impede its use
- Tools/mechanisms available to combine data seamlessly

Vision (implementation)



Reference data components

Proposed by ETEMII, validated for ESDI

- Geodetic reference system
- Units of Administration
- Cadastral parcels
- Addresses
- Selected topographic themes
 - Elevation model
 - Transportation Networks - Road and Railway
 - Hydrography - watercourses and coastline
- Buildings
- Orthoimagery

Reference data components

Proposed by ETEMII, validated for ESDI

- Geodetic reference system
- Units of Administration
- Cadastral parcels
- Addresses
- Selected topographic themes
 - Elevation model
 - Transportation Networks - Road and Railway
 - Hydrography - watercourses and coastline
- Buildings
- Orthoimagery

A preliminary assumption

the primary mandate of EuroGeographics Members is to maintain and make available geographic reference data over the national territory

Role of EuroGeographics

- Coordinate & facilitate the creation of and access to *reference data* for Europe
- Focus on:
 - Development of technical specifications for metadata & reference data
 - Implementation of the specifications
 - Pricing & licensing policies
 - Procedures & Processes
 - Partnerships
- Focal point for the EC (and others) - the 'European Gateway' to Europe's National Mapping Agencies

Objectives

- To promote and facilitate collaboration and best practice between members
- To promote the NMAs, their national and pan-European products & services and their leadership role in ESDI
- To provide harmonised metadata and reference data for Europe that meets customers' needs for quality, timeliness, ease of access and value for money
- To work in partnership with others to build the ESDI consistent with national and global SDIs

Action plan ‘think big, start small’

- improve access to existing data
 - metadata new project
- initial pan-European reference data
 - continue current projects (SABE, EGM, ERM)
 - initiate new projects (road data, elevation model)
- prepare implementation long term vision
 - develop specifications, procedures
 - develop policies (pricing, licensing, access)
- improve efficiency
 - process management
 - communication plan

“EUREF is an example of a very successful initiative within the IAG”

(João Agria Torres)

WG8 contribution to the vision and strategy

- Common geodetic reference frame
 - ETRS89, EUREF
 - EVRS, EUVN
 - “European” map projections
 - European geoid
- Integration mechanisms
 - standardisation (with ISO)
 - inventory existing coordinate systems
 - transformation mechanisms
- Expert support to EGG projects

Projects for Experts

