

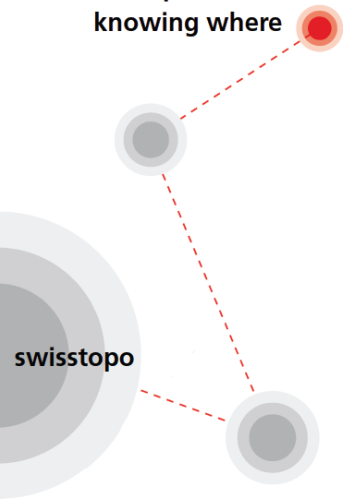


Schweizerische Eidgenossenschaft
Confédération suisse
Confederazione Svizzera
Confederaziun svizra

Federal Office of Topography swisstopo

wissen wohin
savoir où
sapere dove
knowing where

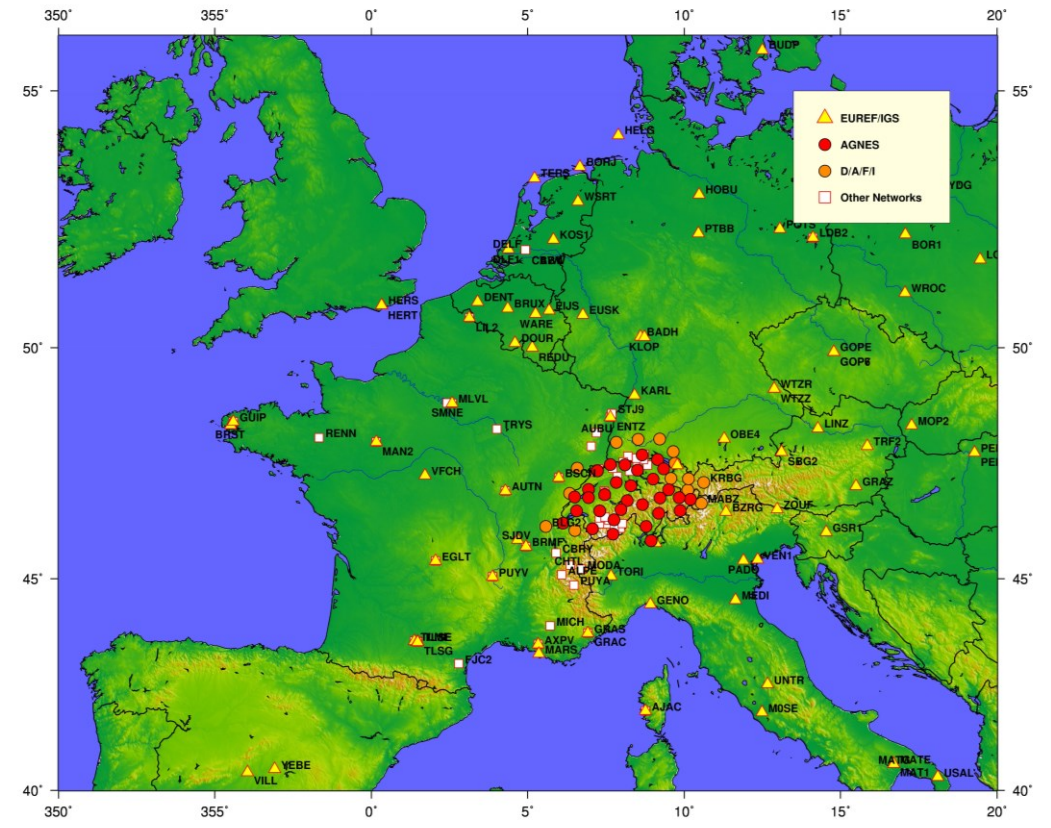
National Report of Switzerland



Simon Lutz, Daniel Ineichen, Stefan Schaer, **Arturo Villiger**, Daniel Willi
arturo.villiger@swissopo.ch



-
- SS
- rland
- Map of Europe showing the distribution of 1000 sampling sites. A red dot indicates the location of the study site in central Europe. The map is labeled with 'SS' in the top left and 'rland' in the bottom left.

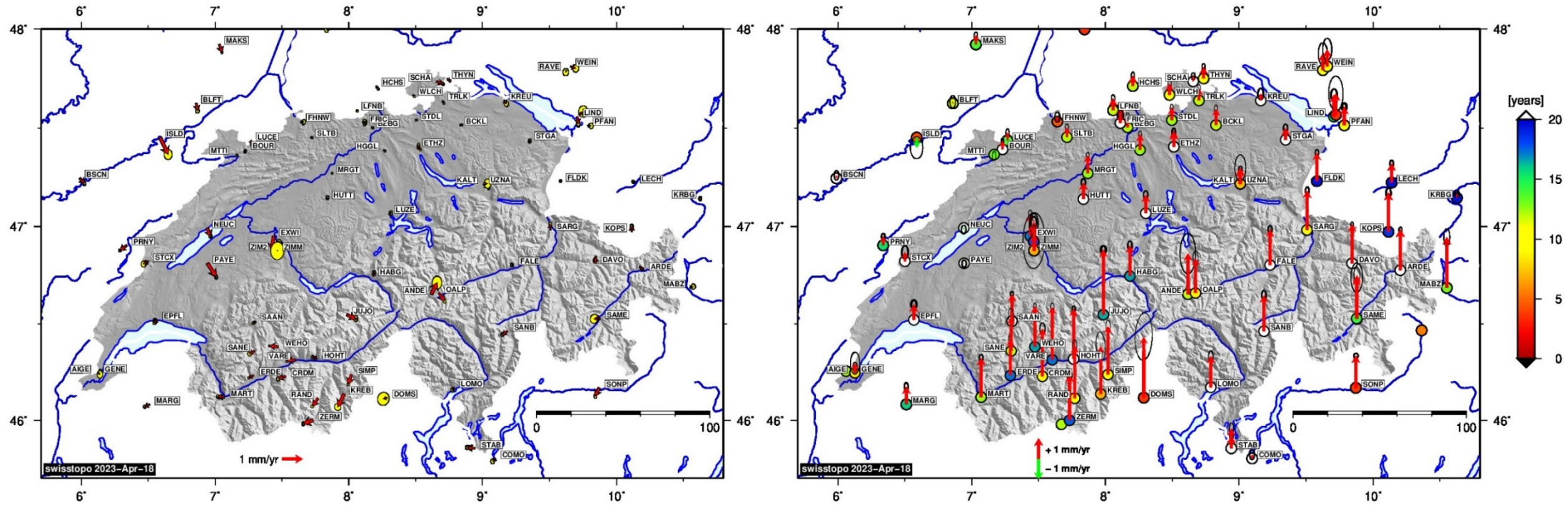


Federal Office of Topography swisstopo

EUREF Symposium 2023, 25 May 2023



Multi-Year GNSS Station Velocities

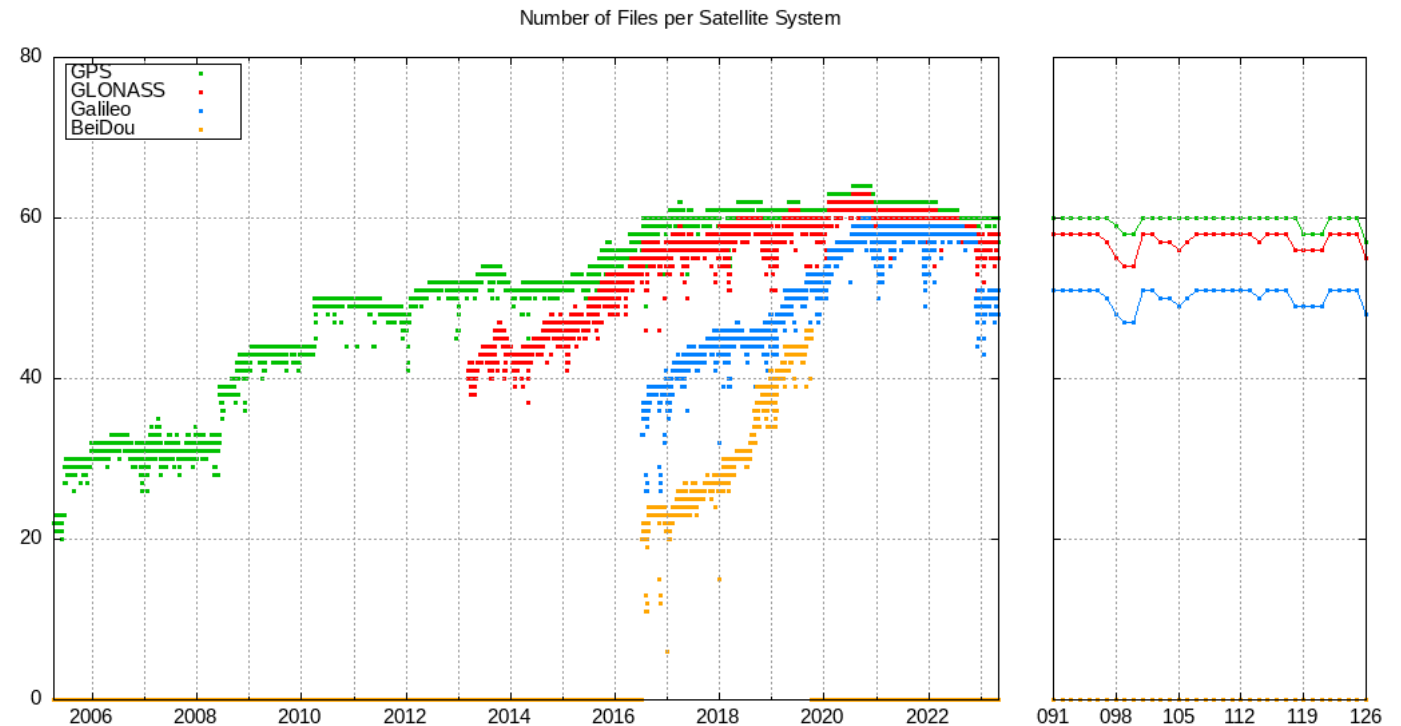


Horizontal (left) and vertical (right) velocity field determined with the daily updated multi-year solution of permanent GNSS stations.



Analysis Center for EUREF (“LPT”)

- Daily and weekly final, daily rapid, as well as hourly near real-time multi-GNSS solutions
- Application of the IGS Repro-3 standards at the end of 2022 (e.g. consideration of only calibrated frequencies) for the final product line

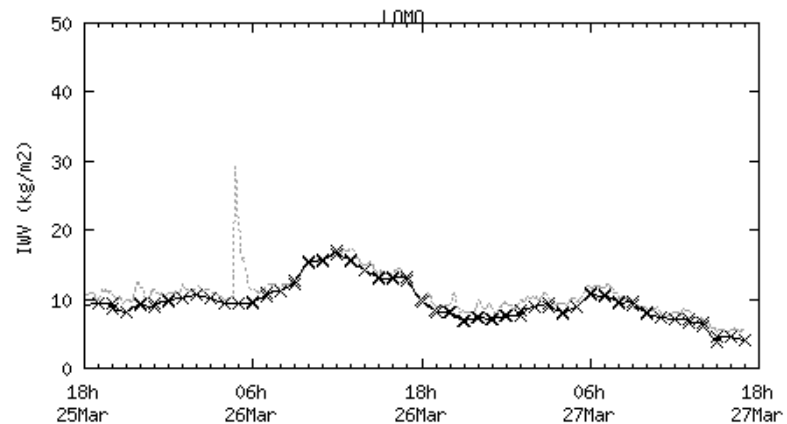
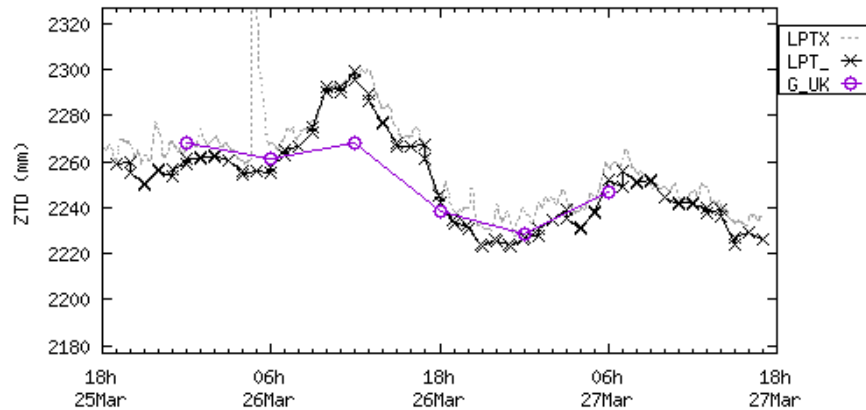




Contributions to GNSS Meteorology

ZTD estimates submitted to EUMETNET

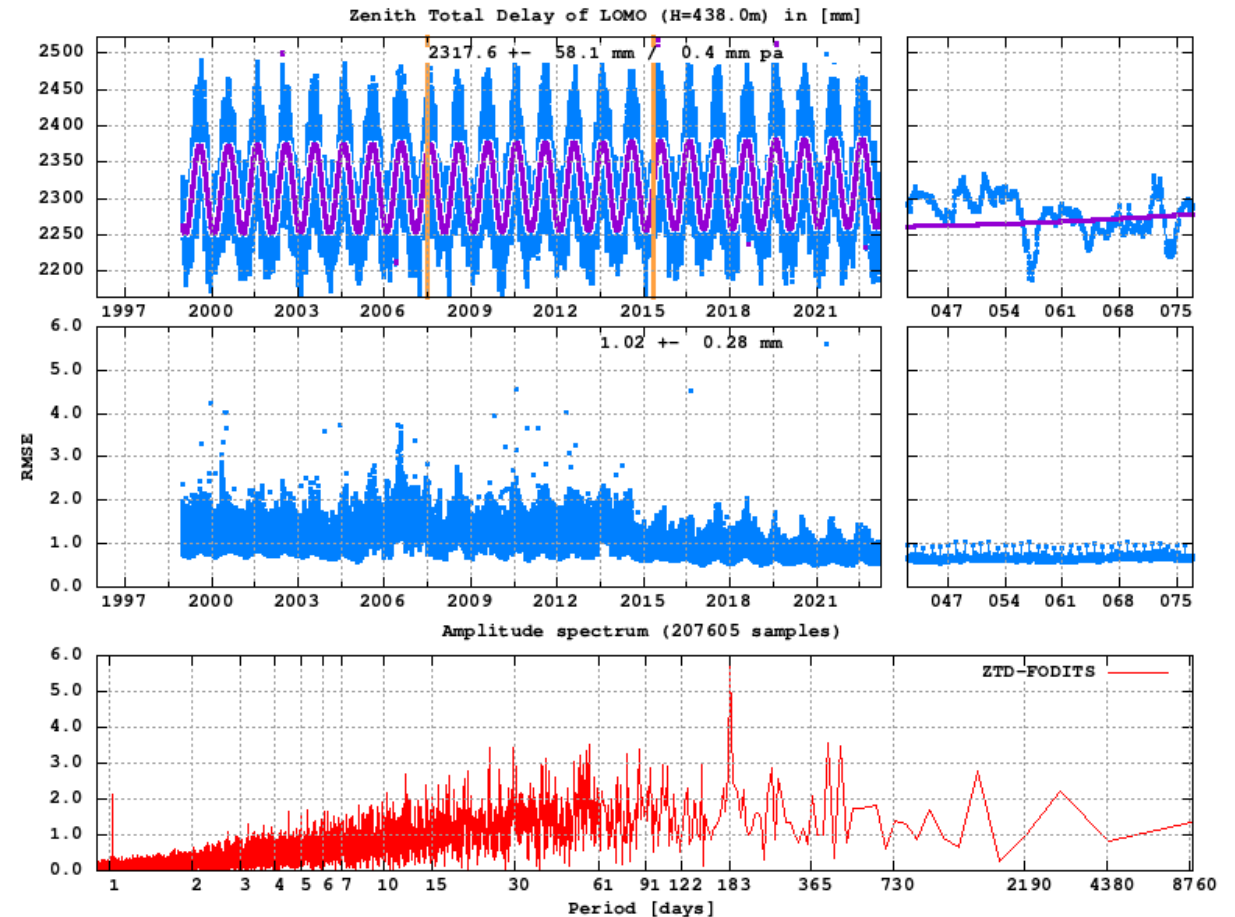
- Hourly near real-time solution ("LPT_")
- 15 seconds real-time solution ("LPTX")



created: 27/03 18:01

(c)KNMI/EGVAP

Long-term trends in the hourly ZTD analysis

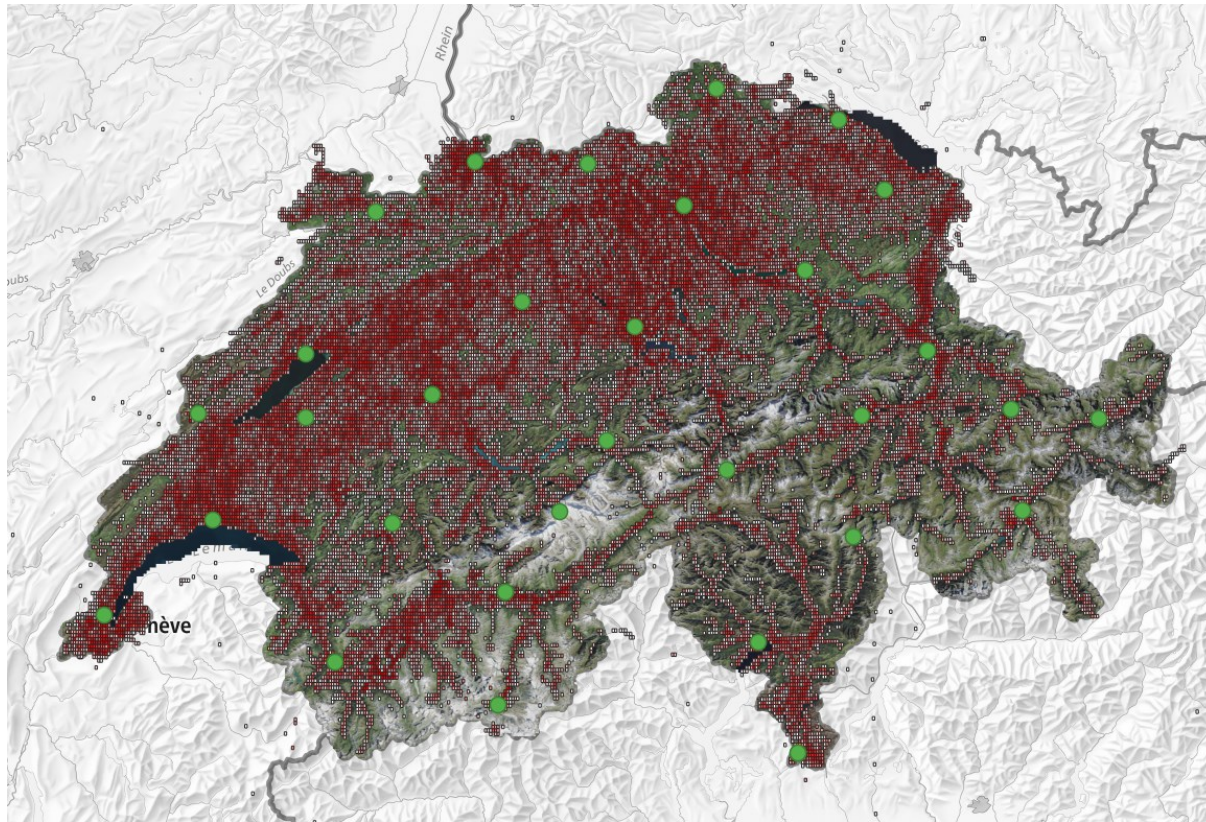


29-Mar-2023 21:11:04

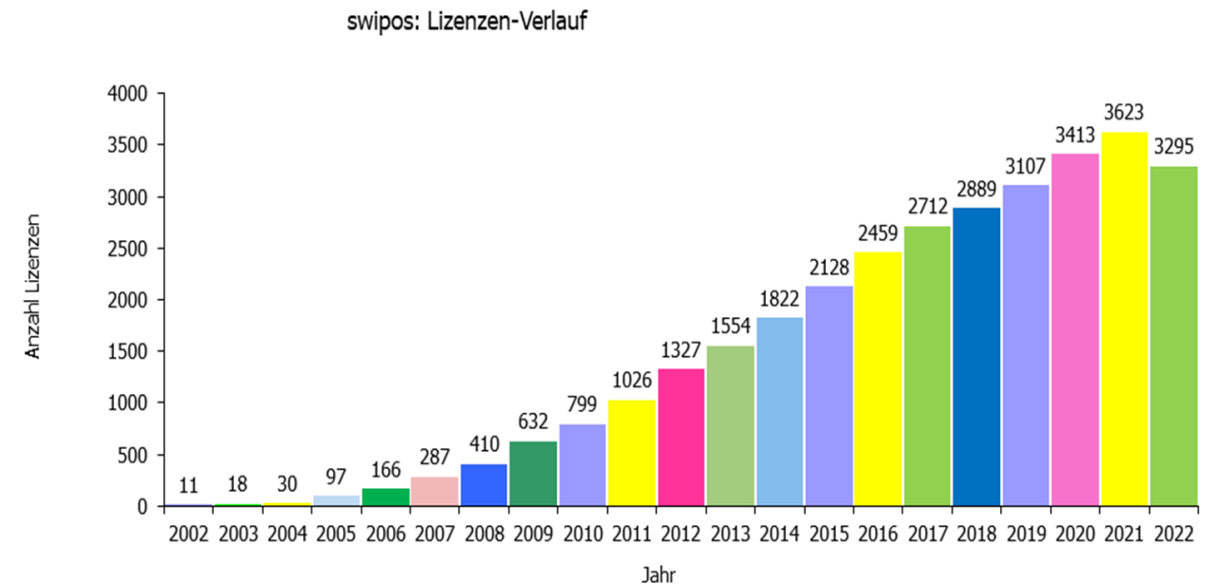


Swiss Positioning Service (swipos)

→ ensures the access to the Swiss reference frame (LV95) using RTK



Federal Office of Topography swisstopo



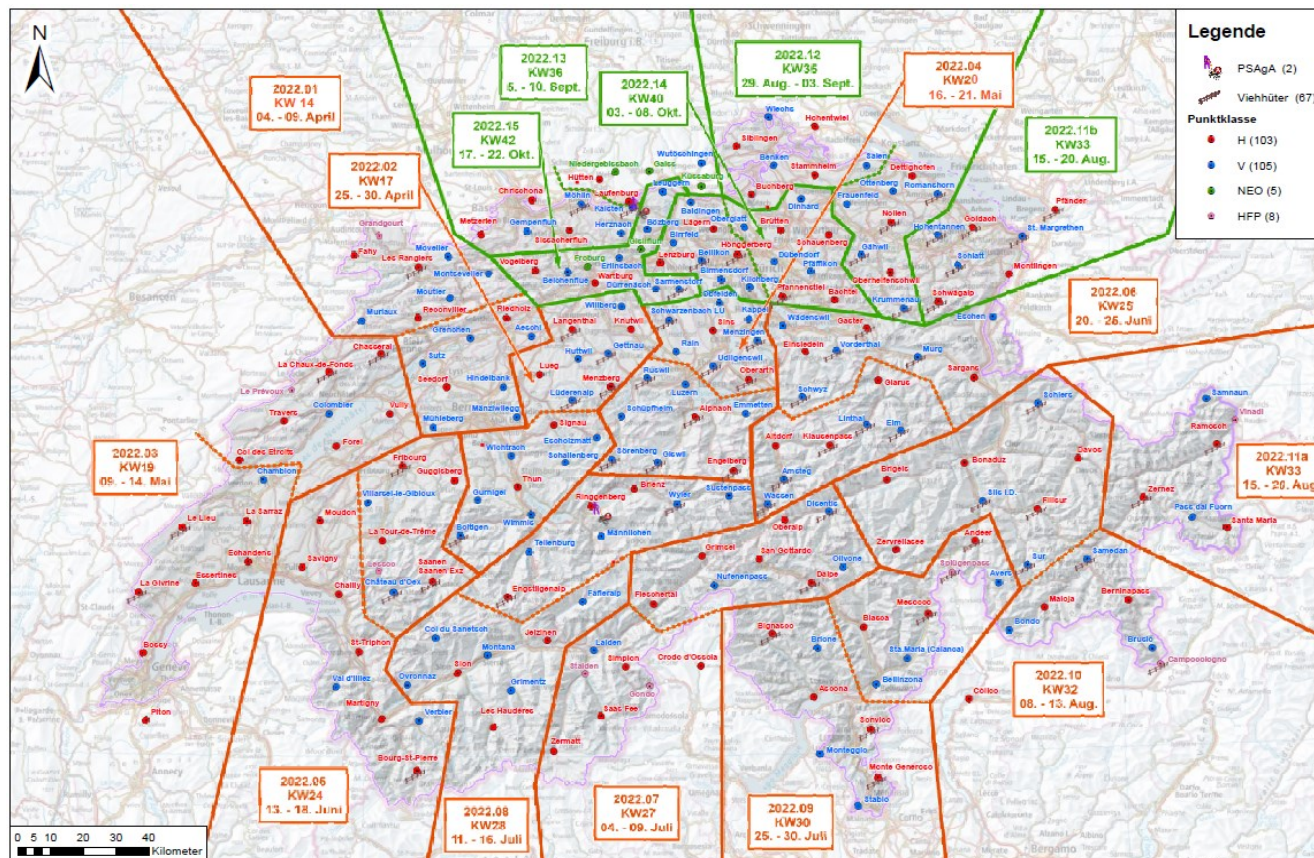
EUREF Symposium 2023, 25 May 2023



CHTRF Campaign 2022

1998 – 2004 – 2010 – 2016 – **2022**

Campaign statistics:



- 221 measured ref. points
- 44 h observation time
- 8 GNSS receivers
- 10 operators
- 16 weeks
- 214 person-field-days

41 AGNES permanent stations



Geostation Zimmerwald / Gravity

- Supporting SLR activities (access to ITRF)
- Our GNSS link to EUREF (stations ZIMM and ZIM2)
- Gravity measurements:
 - three absolute gravimetry measurements in 2022

