



# NATIONAL REPORT OF SWEDEN

---

– GEODETIC ACTIVITIES AT LANTMÄTERIET

EUREF SYMPOSIUM, TALLINN, 22-24 MAY 2019

LANTMÄTERIET



# SWEPOS™ – INCREASE REAL-TIME SERVICE AVAILABILITY

Building redundant server infrastructure for the network RTK service in a separate physical location

- High availability, less downtime – protects against e.g. loss of electricity or internet connectivity
- Demand for uninterrupted service from current applications (e.g. agriculture), as well as future applications (e.g. autonomous vehicles)
- Easier to perform system maintenance – traffic can be redirected to the secondary location while the primary location is being upgraded



# REVIEW – MAINTENANCE OF NATIONAL GEODETIC CONTROL NETWORKS

- Covers active as well as passive networks
- Some updates of the maintenance policy
  - Increase the number of GNSS/levelling points  
→ improve geoid determination
  - Renewed levelling of GNSS/levelling points
  - Renewed GNSS observation of GNSS/levelling points
  - Tightening of the policy for replacement of destroyed height benchmarks  
→ secure realisation of the national height system  
→ ensure accessibility of the height control network





# AIRBORNE GRAVIMETRY

- During 2017-2018 Lantmäteriet's marine gravimeter has collected data at sea for a total of three months
  - Contribution to the FAMOS project
- In October 2018, the gravimeter was tested in the air
  - First time for this instrument type to be used onboard an airplane
  - Two weeks' campaign over Kattegat
  - Cooperation with DTU Space

FAMOS = Finalizing Surveys for the Baltic Motorways of the Sea

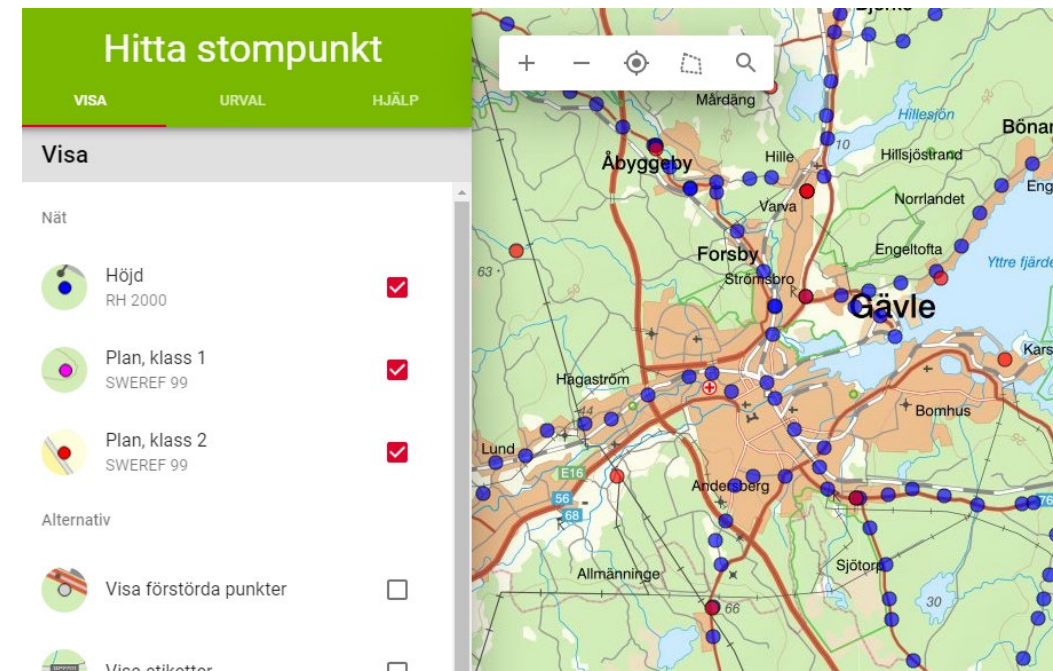


# THE DIGITAL GEODETIC ARCHIVE

New services to access information about the national geodetic control points – released earlier this year

- Open access (CC0)
- Web self-service: <https://stompunkt.lantmateriet.se>
- WMS: equivalent information in raster format; for import into users' own GIS
- Direct access service: information access via M2M; for integration of data in users' own applications

Screenshot from the web self-service "Hitta stompunkt"



# THANKS FOR YOUR ATTENTION!

**T. Kempe**, A. Alfredsson, L. Alm, A. Engfeldt, B. Eurenus,  
L. Jivall, M. Lidberg, M. Lilje, T. Ning, D. Norin, P-A. Olsson,  
H. Steffen, P. Wiklund, J. Ågren

**Geographic and Land Information Services,  
Geodetic Infrastructure**

CONTACT [geodesi@lm.se](mailto:geodesi@lm.se) PHONE +46 (0)26 633932

