



General Command of Mapping
National Mapping Agency

National Report of Turkey

to

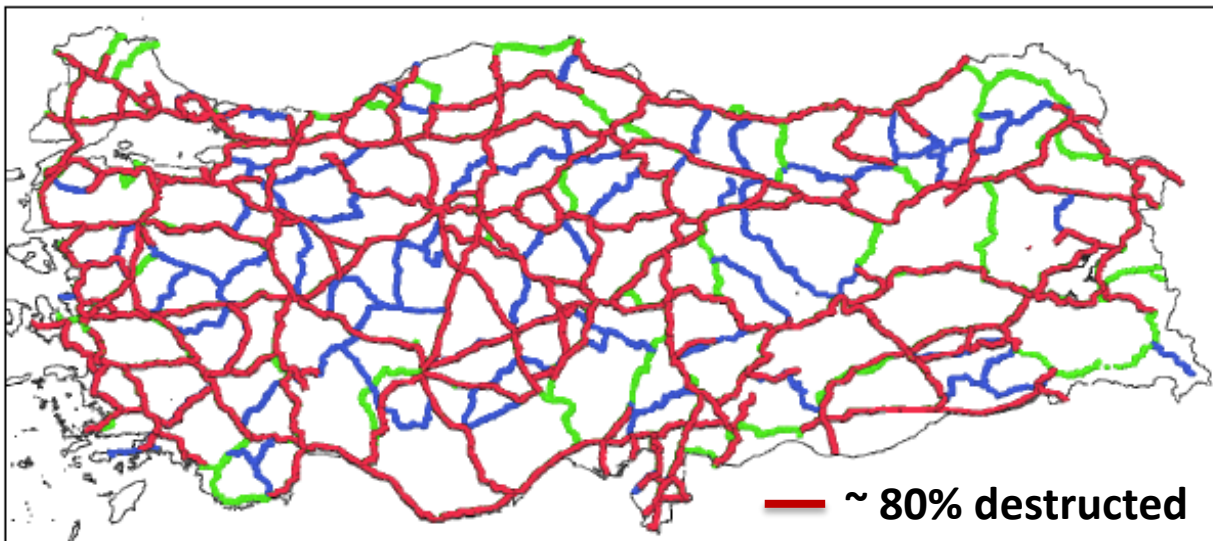
EUREF Symposium 2015

M. Simav, H. Yildiz, A. Cingoz, E.Sezen, A.I. Kurt, S. Ozdemir
General Command of Mapping, Department of Geodesy, Ankara, Turkey,
mehmet.simav@hgk.msb.gov.tr

Presented at EUREF 2015 Symposium, 03-05 June 2015, Leipzig, Germany.

Turkey Height System Modernization Project

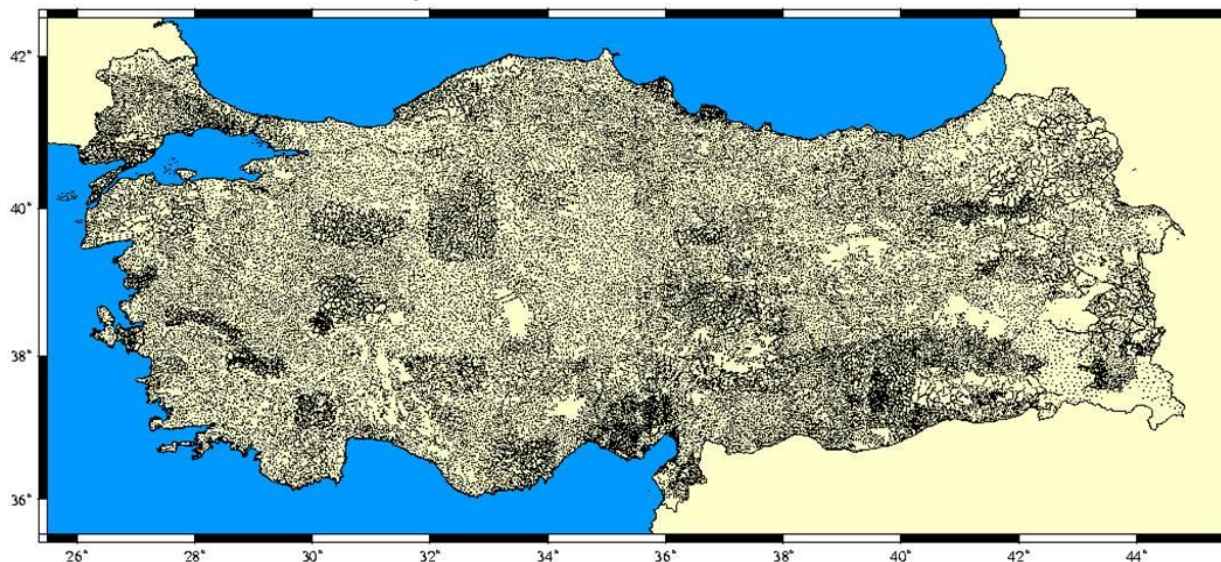
Levelling Network



Displacement



Terrestrial Gravity

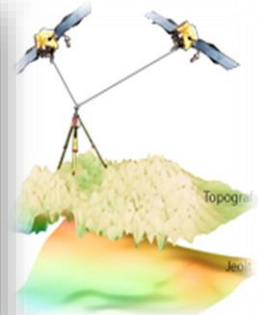
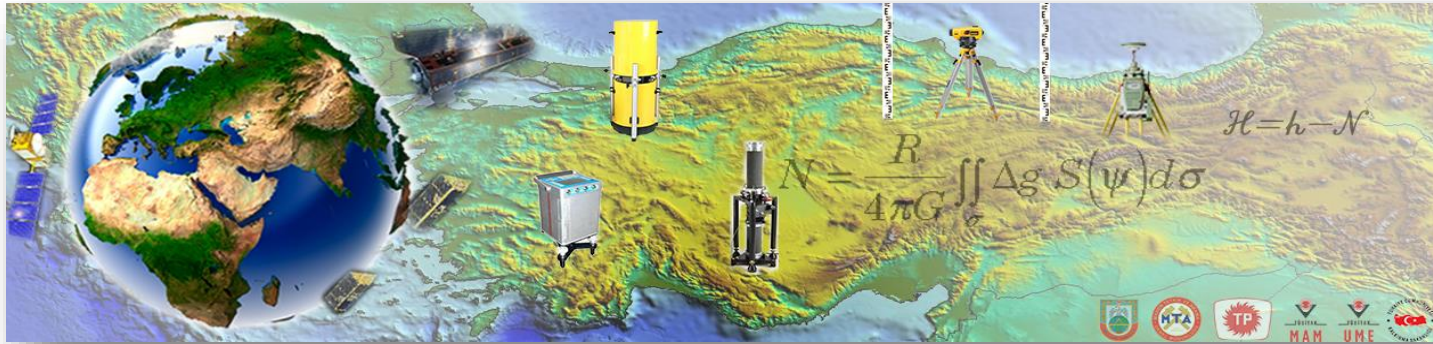


Inconsistent coordinate
and gravity reference
frames



Existing Geoid Model
Accuracy : ± 8 cm

Turkey Height System Modernization Project



Partners



General Command of Mapping



General Directorate of Mineral Research & Exploration



Turkish Petroleum Agency



Marmara Research Center

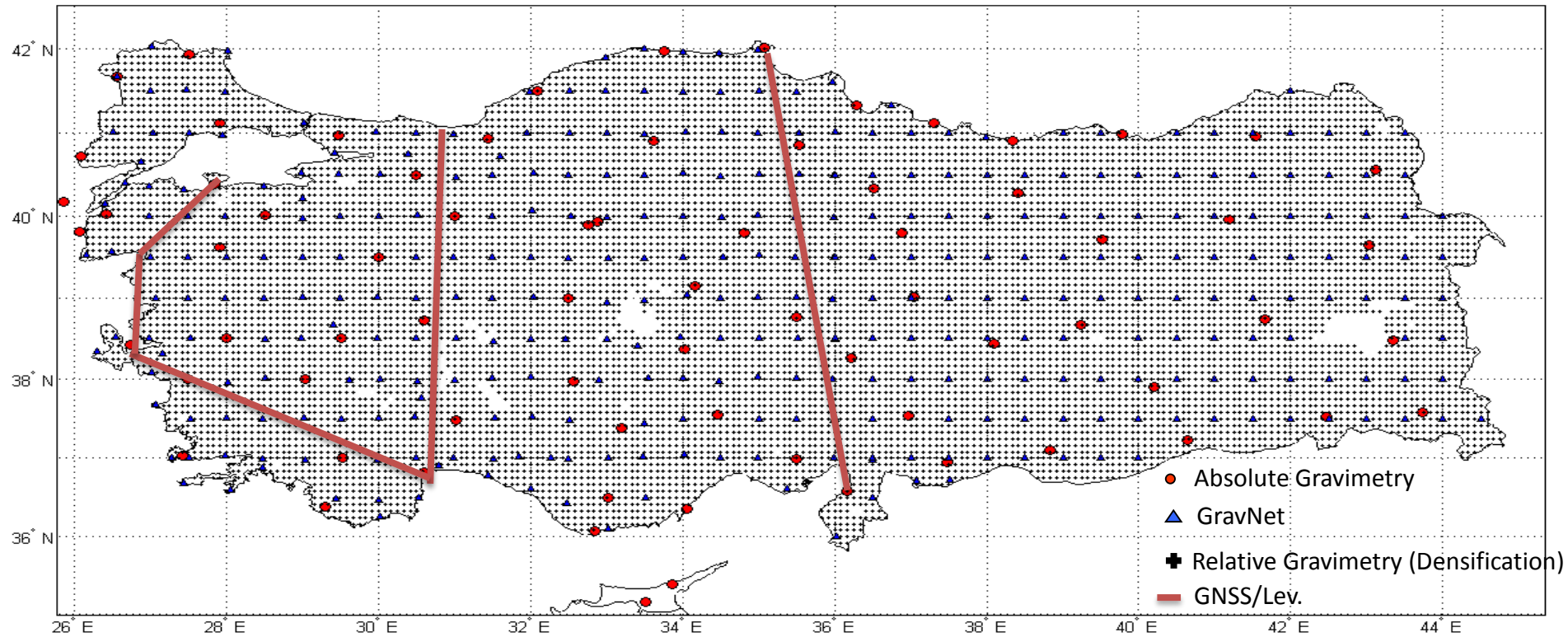


National Metrology Institute

Info

- Supported by Turkish Ministry of Development
- 2015 – 2020 (5 years long)
- € 10 M budget
- Aims to realize high accuracy and resolution geoid model (e.g 1-3 cm @ 1-3 km) for GNSS heighting.

Turkey Height System Modernization Project – Field Works



Abs. Grav.



Rel. Grav.



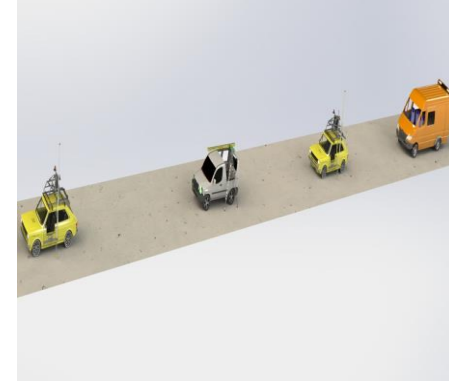
Airborne Grav.



Shipborne Grav.



GNSS/Mot.Lev.



Turkey Height System Modernization Project – Office Works

- Provision of instruments
- Preparing guidelines for gravity, GNSS and levelling measurements
- Web based data upload and processing softwares for each dataset
- Quality control of existing historical gravity data
- Data exchange with neighboring countries
- Editing our digital elevation and bathymetry models
- Geoid modelling with different techniques

Thank You