

# NATIONAL REPORT OF SLOVENIA

---

**Klemen Medved, Žarko Komadina, Jurij Režek,**  
(Surveying and Mapping Authority of the Republic of Slovenia)

**Sandi Berk, Katja Oven**

(Geodetic Institute of Slovenia, Ljubljana)

**Božo Koler, Miran Kuhar, Polona Pavlovčič Prešeren, Oskar Sterle, Bojan Stopar**

(University of Ljubljana, Faculty of Civil and Geodetic Engineering)

# Presentation topics

- Project of Modernization of Spatial Data Infrastructure
- National Vertical Reference Frame and Gravity Field
- Other Activities

## Project of Modernization of Spatial Data Infrastructure to Reduce Risks and Impacts of Floods

- by EEA Financial Mechanism Programme
- project partners: Norwegian Mapping Authority  
National Land Survey of Iceland
- website: [www.gurs-egp.si/eng/](http://www.gurs-egp.si/eng/)
- four sub-projects covering, one named:
  - Geodetic Reference Framework,

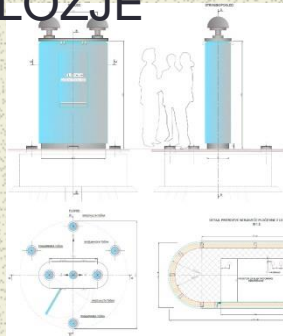


## National Combined Geodetic Network (“zero-order network”)

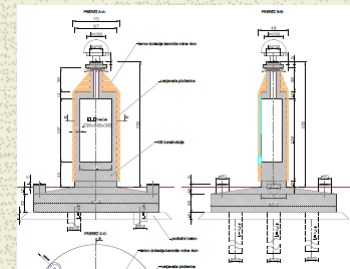
6 stations: 2 of them build up, 3 under construction, 1 existing (tide gauge)



„double“ station PRILOZJE



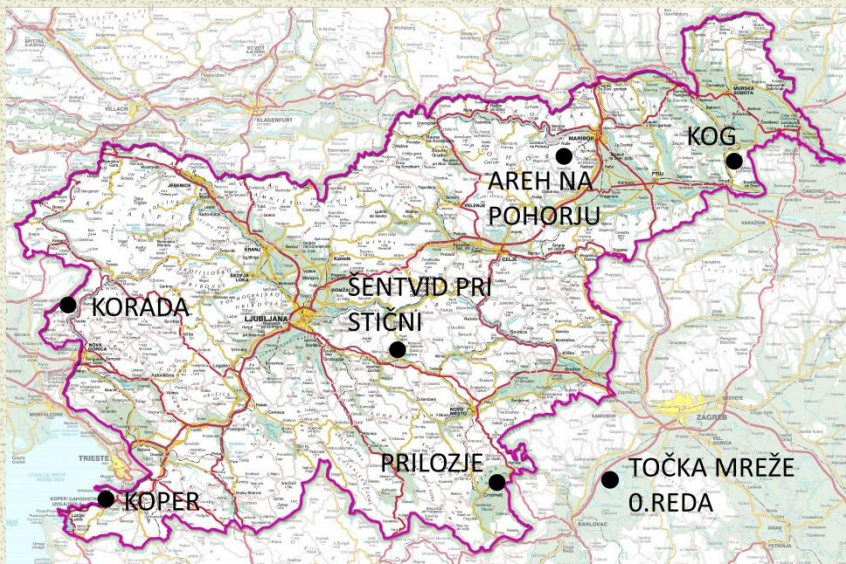
„single“ station KOG



## National Combined Geodetic Network (“zero order network”)

### Aims:

- new, high quality realization of national terrestrial/height reference systems
- monitoring and modelling local velocities
- could contribute to European/other international projects (such as ECGN, EPN, EPOS, EUPOS, IGS etc.)

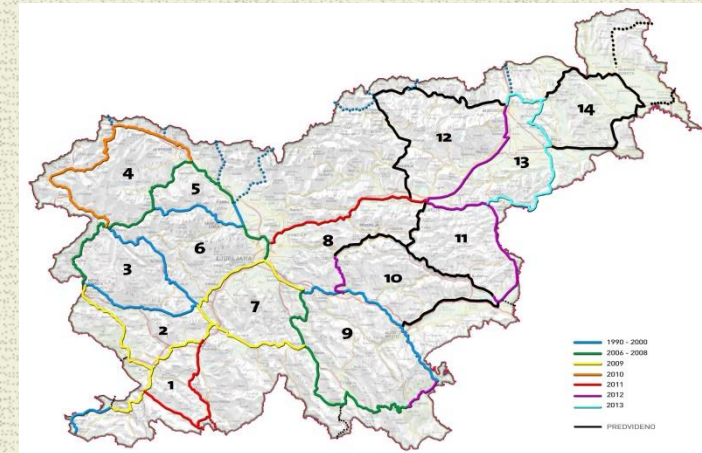




# Vertical reference system (levelling)

## Ongoing levelling:

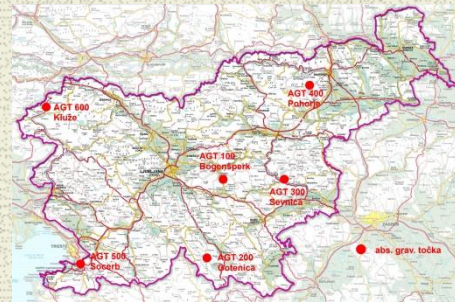
- ~1.900 km planned lines
- ~ 80 % finished (april 2015)
- Measurements finished end of 2015
- Follows calculations / adjustment of network



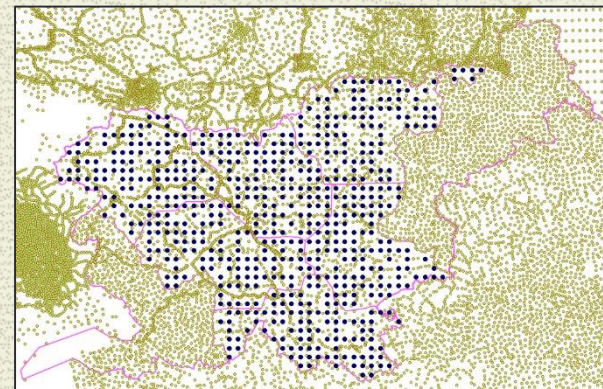
# Vertical reference system (gravity)

## Re-observation of absolute gravimetric points

- 6 points in October 2014
- BEV Austria, FG5/242



- Ongoing measurements - regional gravimetric grid
- Planned ~600 points (4 km grid) in central part of SLO
- 2 relative (Scintrex) gravimeters
- ~30% finished



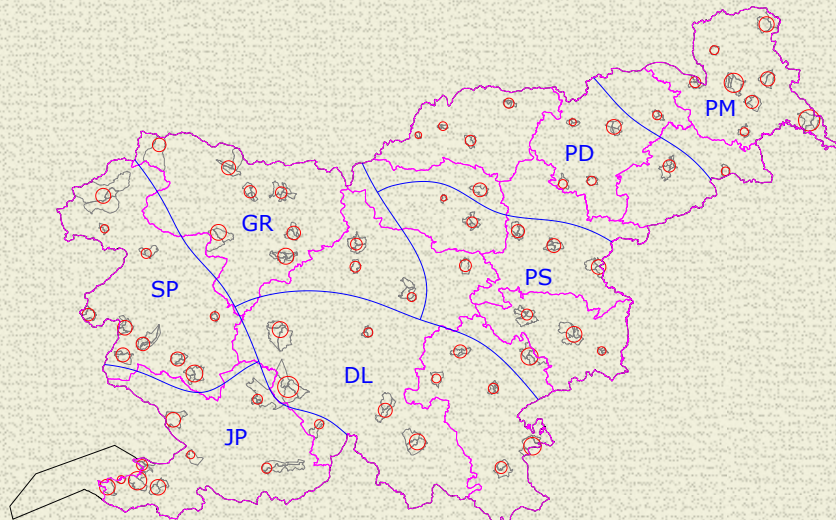


# Other activities

## Verification of Local to ETRS89 Datum Transformation Model

- Based on ~2000 identical points
- Check the quality for cadastral dataset
- 70 testing areas
- Critical areas: densifications of tie points

AIM: transformation of all spatial data sets till november 2017





**Thank you for your attention**