

# EURF Symposium 2015

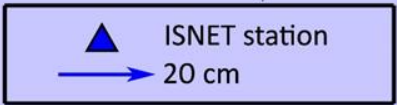
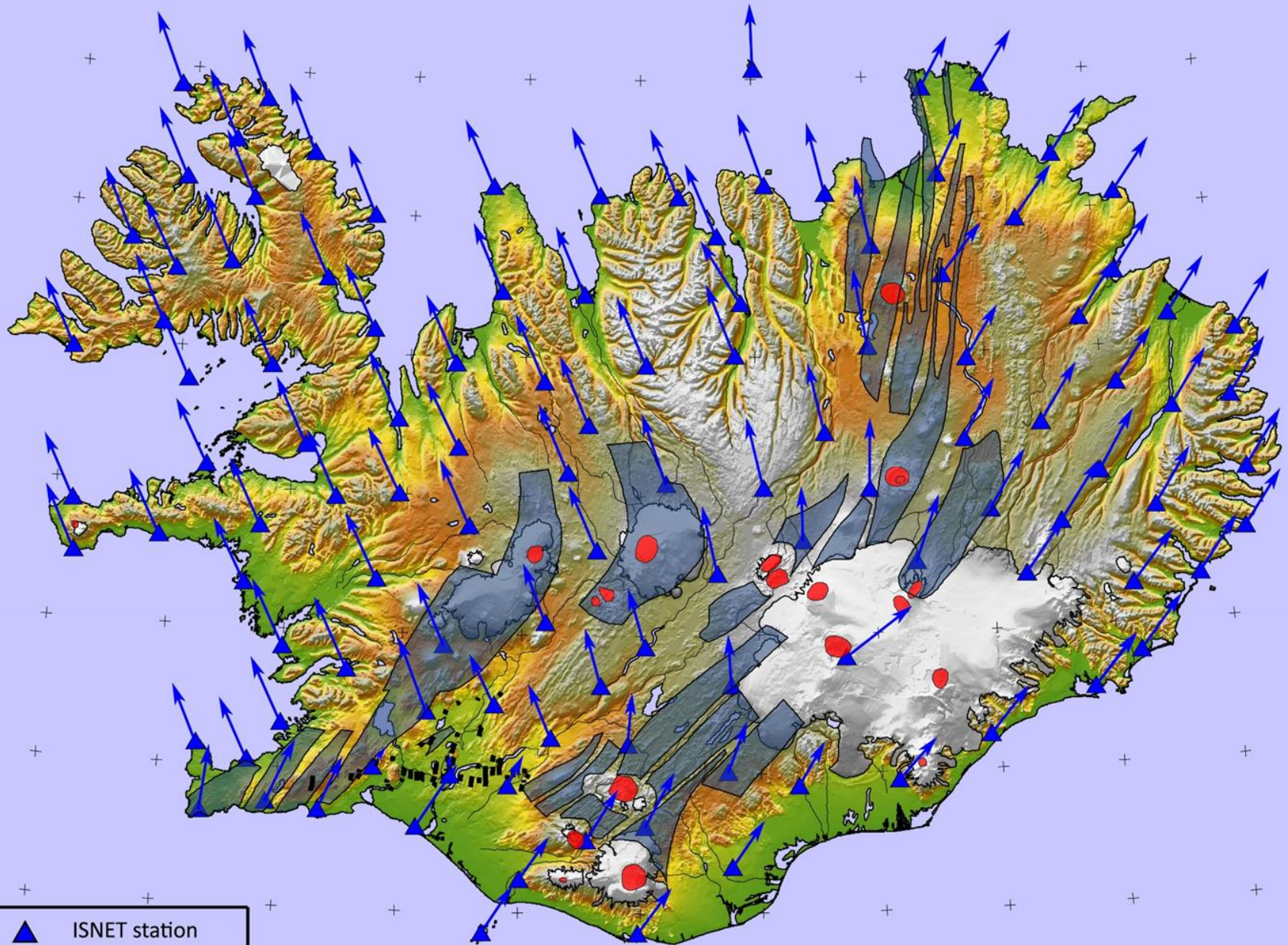
## National report of Iceland

Guðmundur Valsson

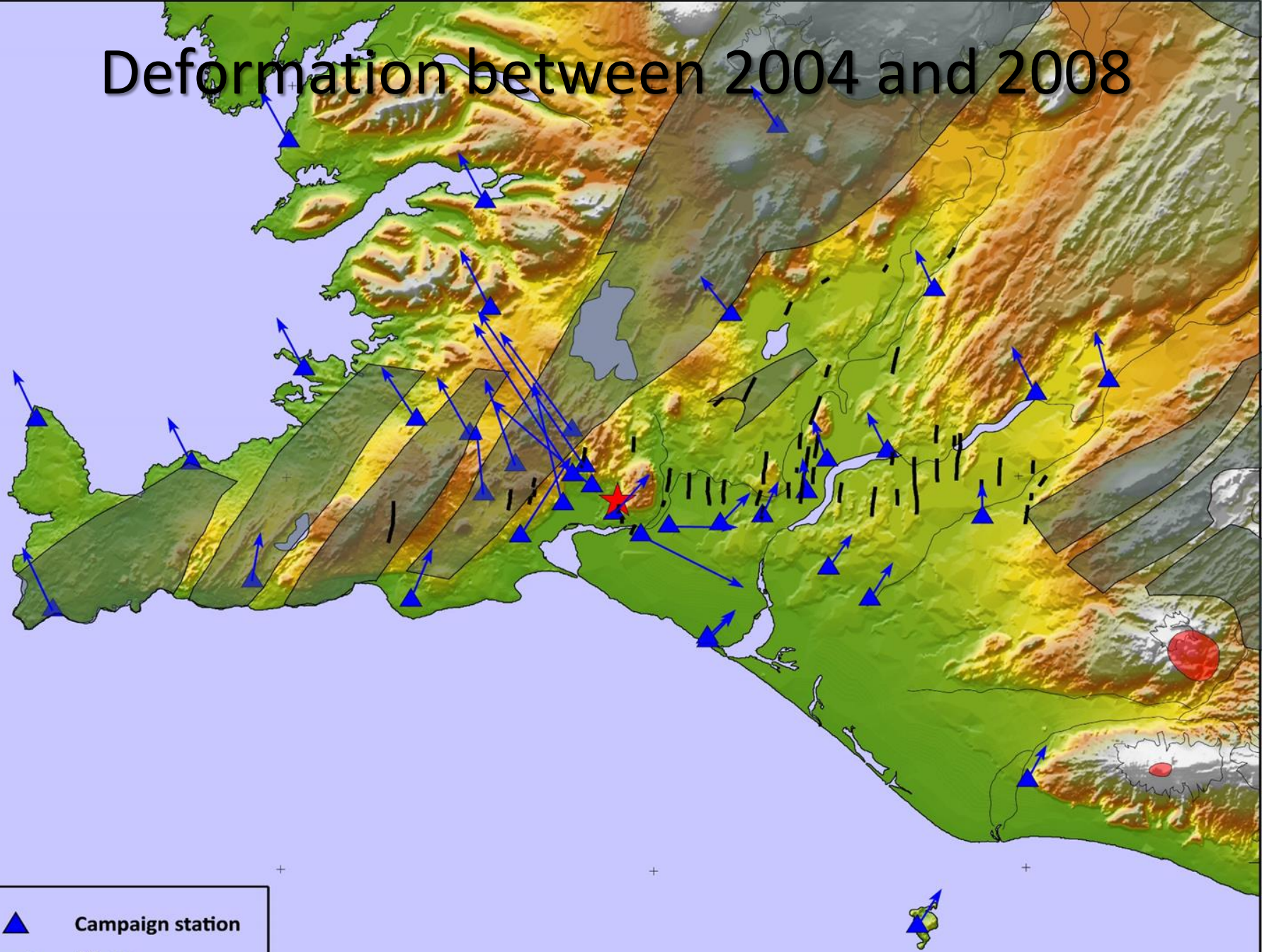
# Activities in 2014

- We planed to measure reference network for the third time in 2015
- Postponed until 2016
- The new datum for Iceland will be semi-dynamic
- GPS re-levelling of 90 points done in 2014

# Horizontal movement between ISN93 and ISN2004



# Deformation between 2004 and 2008

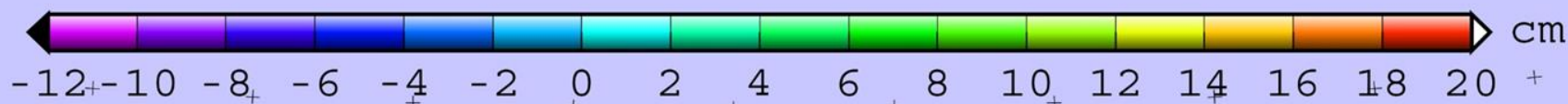
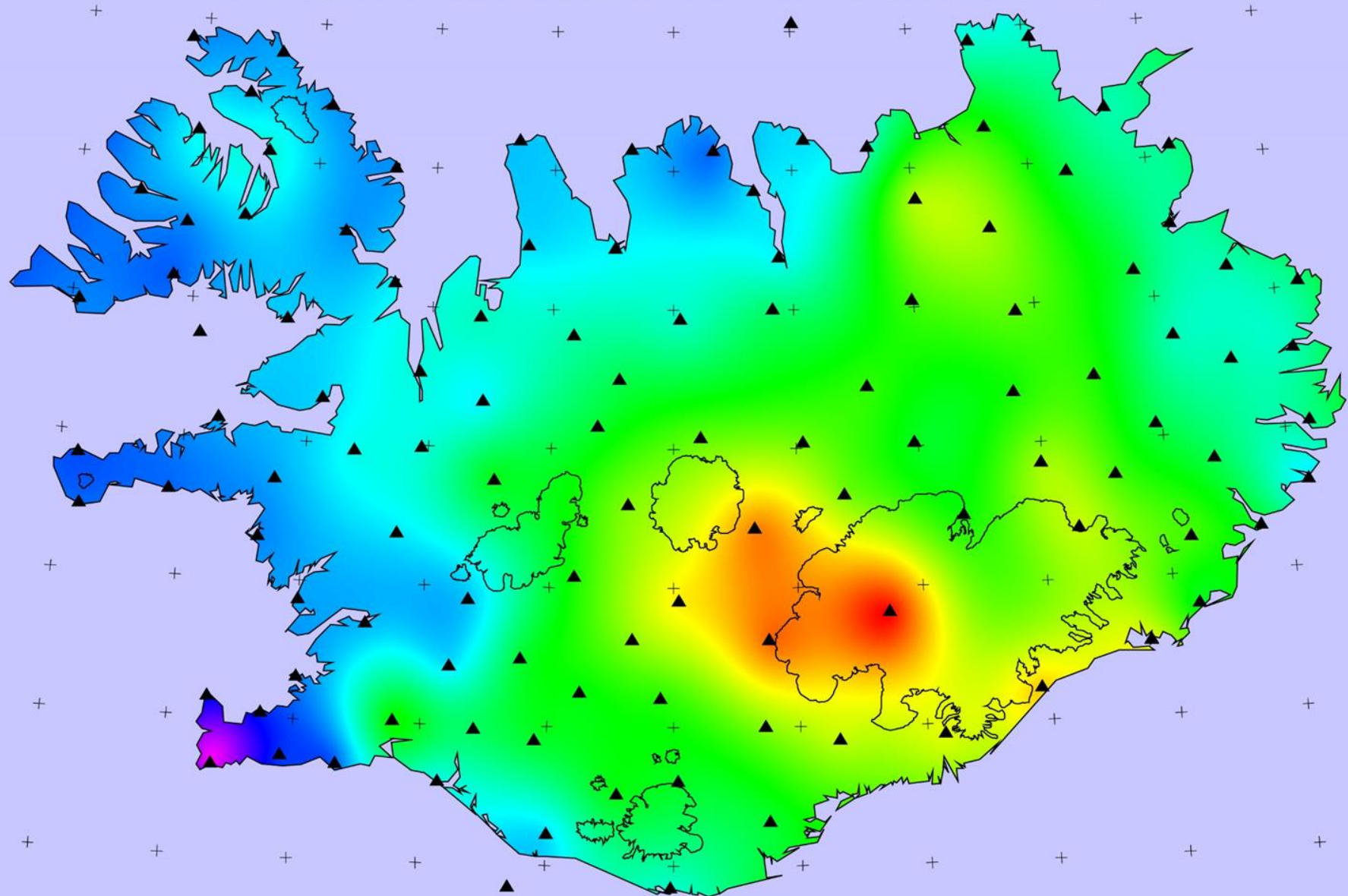


Campaign station

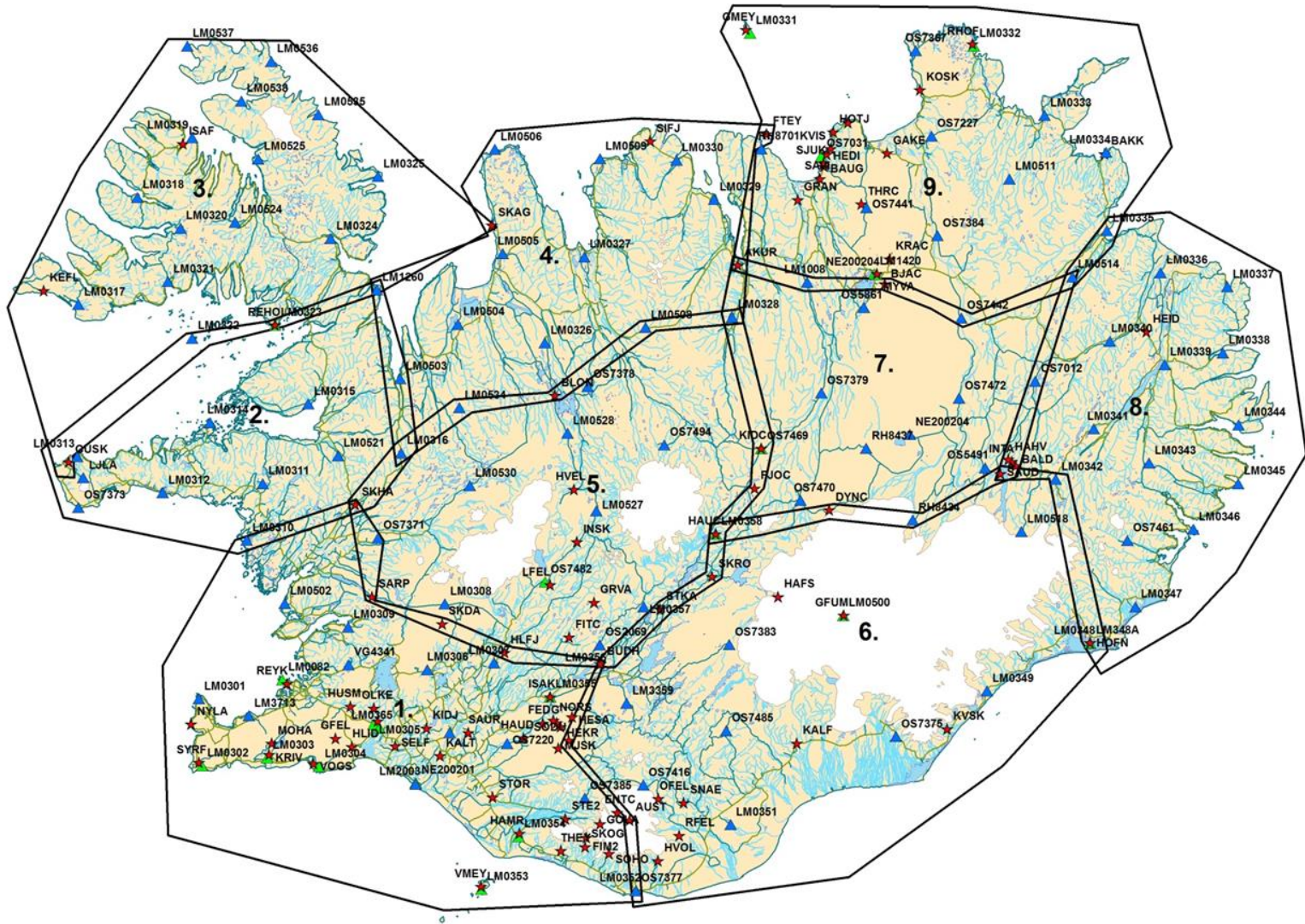


20 cm

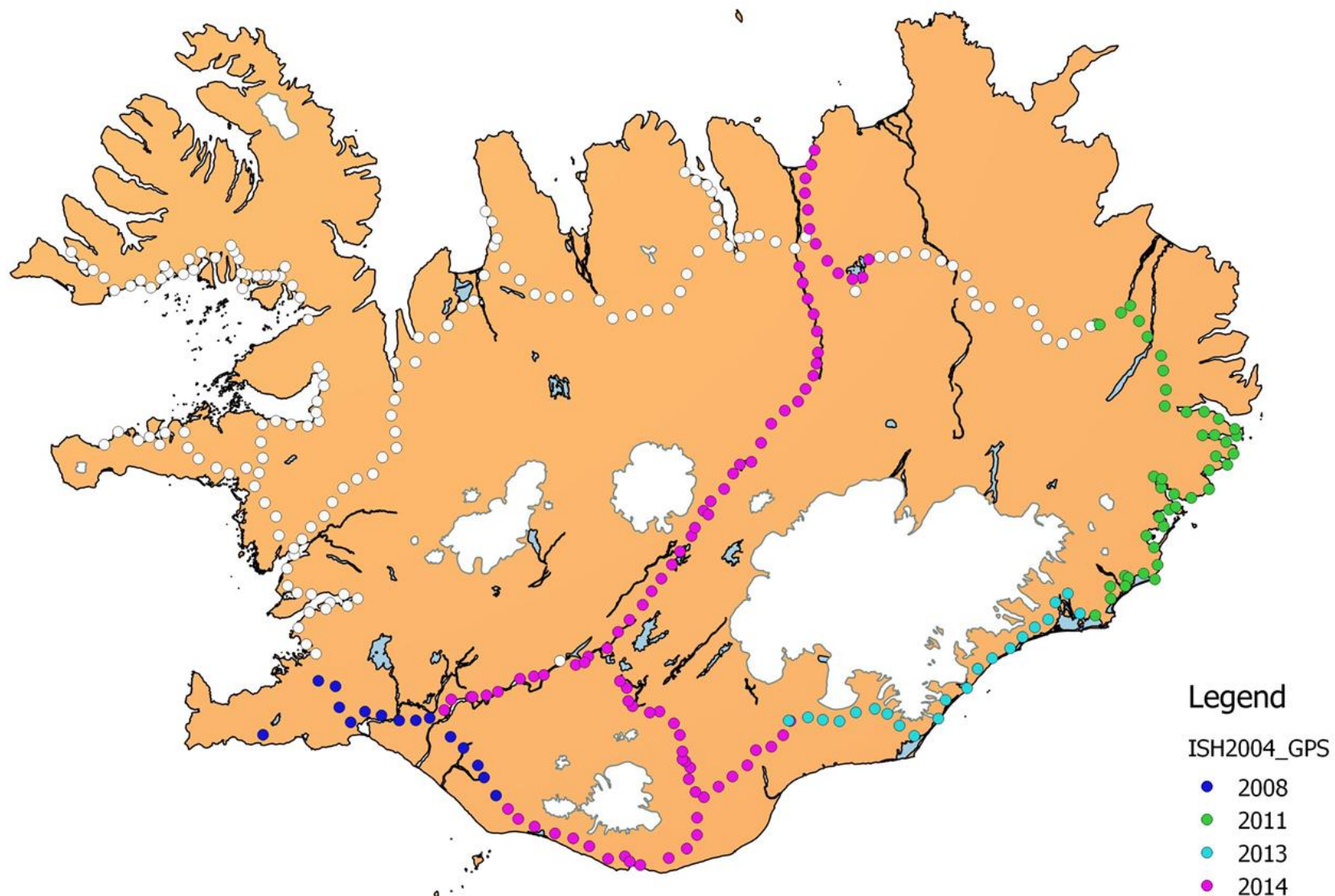
# Vertical movement between ISN93 and ISN2004



# ISNET 2016



## Re-measurement of GNSS Levelling points in ISH2004

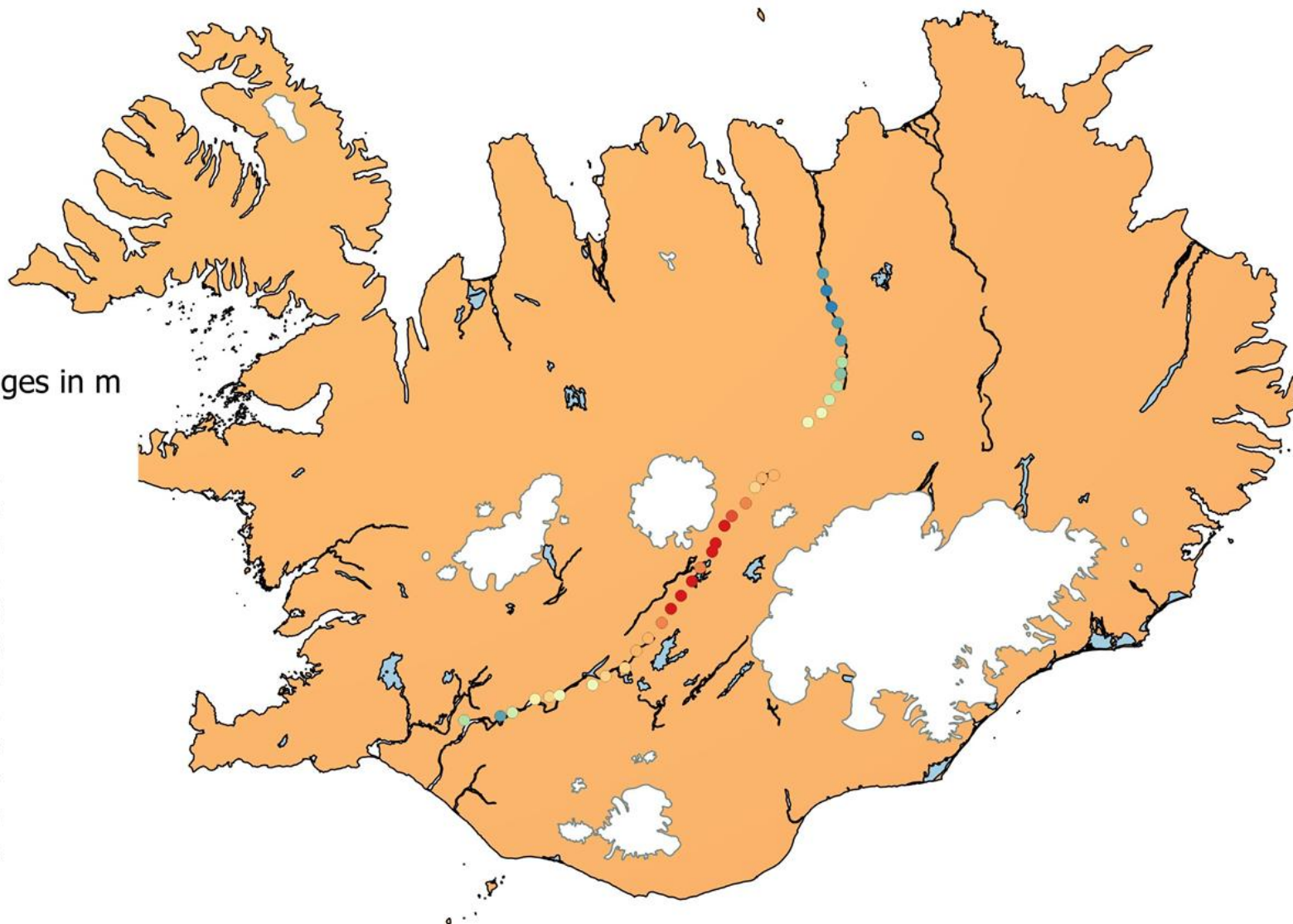


## Vertical changes between 2003 and 2014

Vertical changes in m

spreng

- 0.03 - 0.06
- 0.06 - 0.08
- 0.08 - 0.10
- 0.10 - 0.13
- 0.13 - 0.15
- 0.15 - 0.18
- 0.18 - 0.20
- 0.20 - 0.23
- 0.23 - 0.25
- 0.25 - 0.27
- 0.27 - 0.30
- 0.30 - 0.32



# IceCors

