



EUREF 2013 Symposium
29 – 31 May, 2013
Budapest, Hungary



National report of Croatia 2013

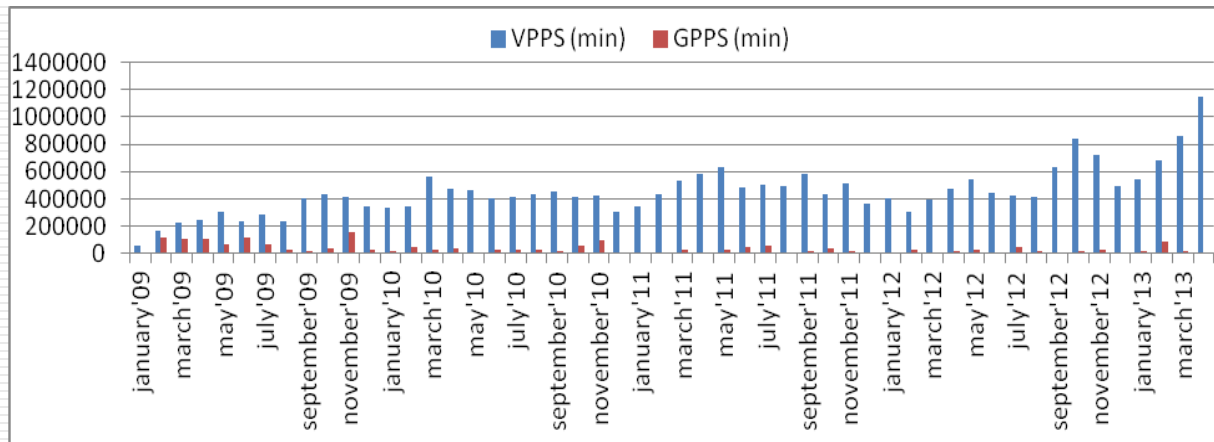
Marijan Marjanović, Margareta Premužić, Martina Ciprijan

CROPOS upgrade

- ❑ In August 2012. upgrade of control center software
Trimble GPSNet > **Trimble Pivot Platform 2.1**
- ❑ from the end of 2011 transmission of RINEX obs. data
for proposed st.: CAKO, PORE, POZE, ZADA, DUB2 to the
EPN, plan in 2013. > **HVAR (EPN)**
- ❑ IGS OSJE > dislocated to new location in **Nova Gradiška**

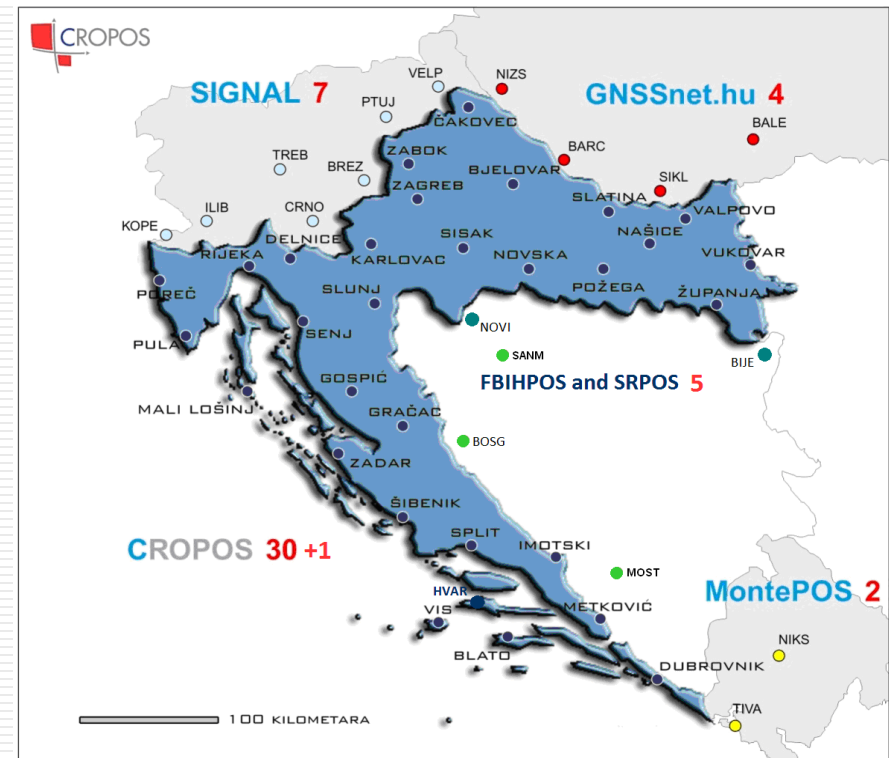
CROPOS system usage

- 99.9% CROPOS system availability, measurement in new HTRS96 system (official coordinate system)
- Registered CROPOS users: **575** companies > 1486 user licenses
- Usage of real time services is enlarged compared to post processing - **in April 2013. > 1 000 000 minutes**
- Minute usage: HTRS 7%, HDKS 29%, RTCM – VRS 64% (increasing usage of **transformation services** in the last year)



Cooperation with neighbouring countries

- In 2013. GNSS data exchange (13) + 5 new stations
CROPOS with **FBIHPOS** and **SRPOS**
- **CRODYN 2013 GNSS campaign (September):**
2 x 24h sessions
- Cca 20 reference points + Slovenia (7) and Bosnia and Herzegovina (5)



Levelling and gravimetric network

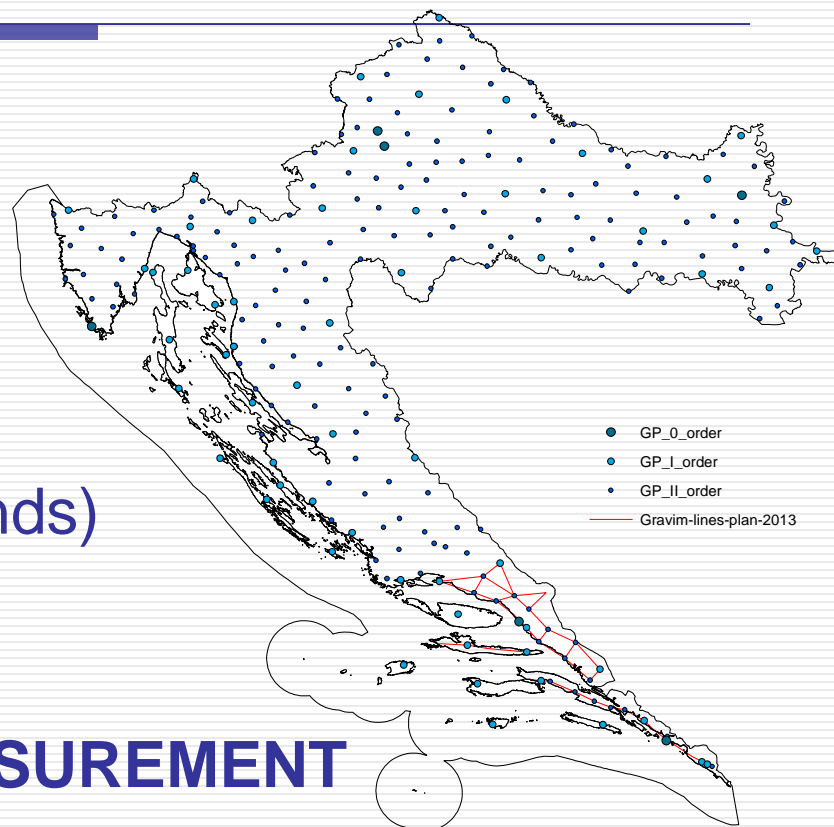
- **Project plan of new high precision levelling network**
 - >17% of levelling benchmark deterioration – last revision
 - > Preparing of documentation for revision process of 22 000 benchmarks – not in the last revision
 - > *marking of benchmarks, planning new lines, levelling and gravimetric survey*

- **Project plan of renewal of absolute gravimetric network**
 - > *Revision of abs.gravimetric points (5), establishment of new points (4), geology stability examination, relative gravimetric measurements, GNSS, levelling measurements, eccentric points, absolute gravimetric measurements*

Gravimetric network of II. order

Gravimetric network of II. order

- ❑ 2012 > Realisation of phase VII and VIII (Lika, North Dalmatia)
- ❑ 2013 > Plan: phase IX – X (South Dalmatia and Adriatic islands)



➤ RELATIVE GRAVIMETRIC MEASUREMENT

- 158 gravimetric points of II. order:

> 2013: 42 new gravimetric points = cca 100 gravimetric lines

□ Thank you for attention!