

A decorative graphic on the left side of the slide, featuring a black crosshair over a blue square, a red square, and a yellow square.

# National report of Slovenia

---

**Klemen Medved**

(Surveying and Mapping Authority of the Republic of Slovenia)

**Bojan Stopar**

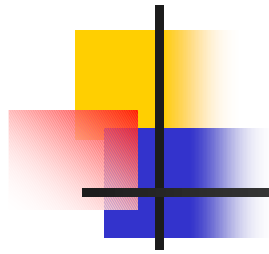
(University of Ljubljana, Faculty of Civil and Geodetic Engineering)

**Katja Bajec**

(Geodetic Institute of Slovenia, Ljubljana)

Chişinău, Moldova

25–28th May, 2011



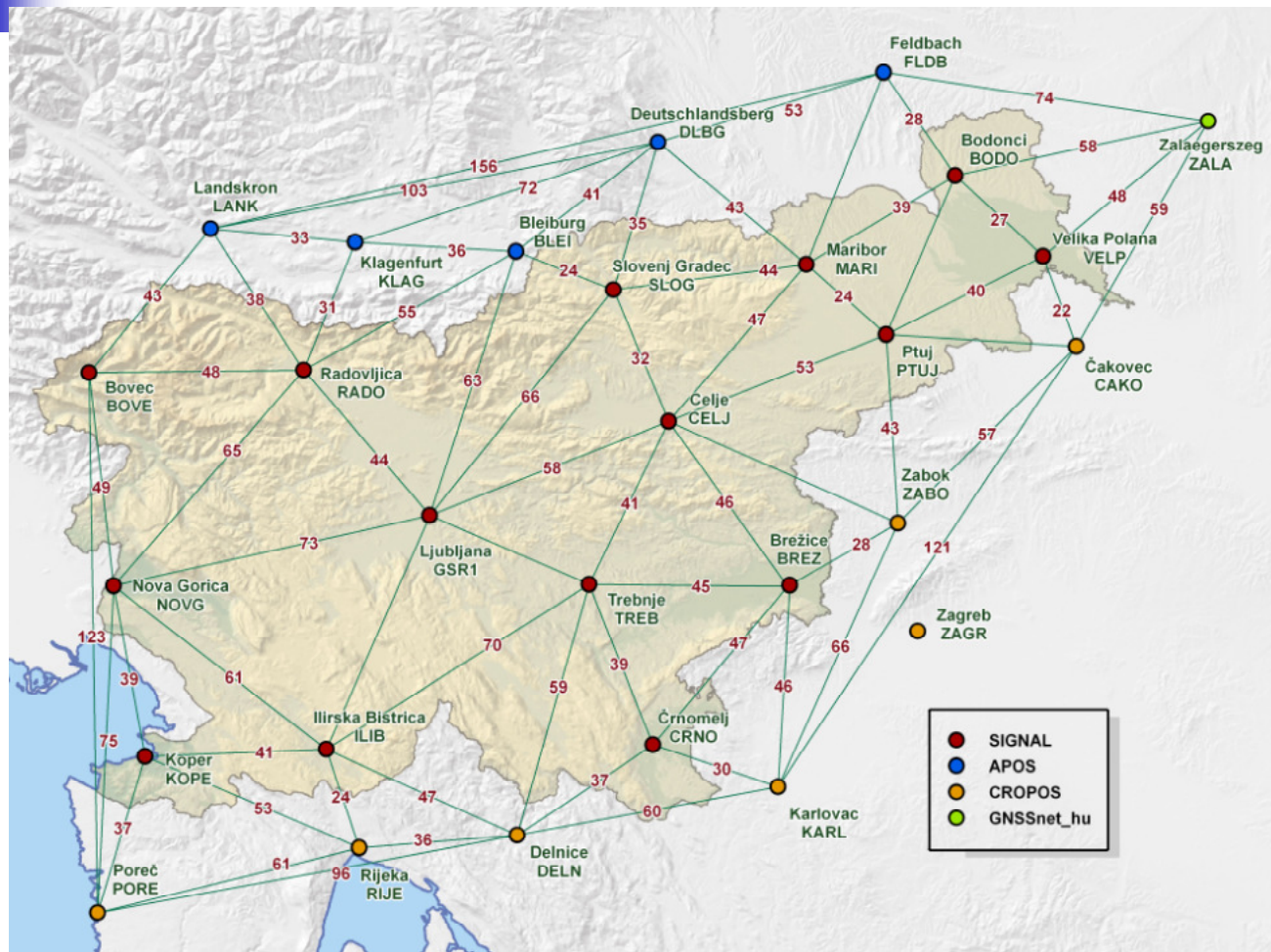
# Presentation topics

---

- Positioning service (SIGNAL)
- Horizontal system
- Height and gravimetric systems
- Height system and geoid

## National report of Slovenia

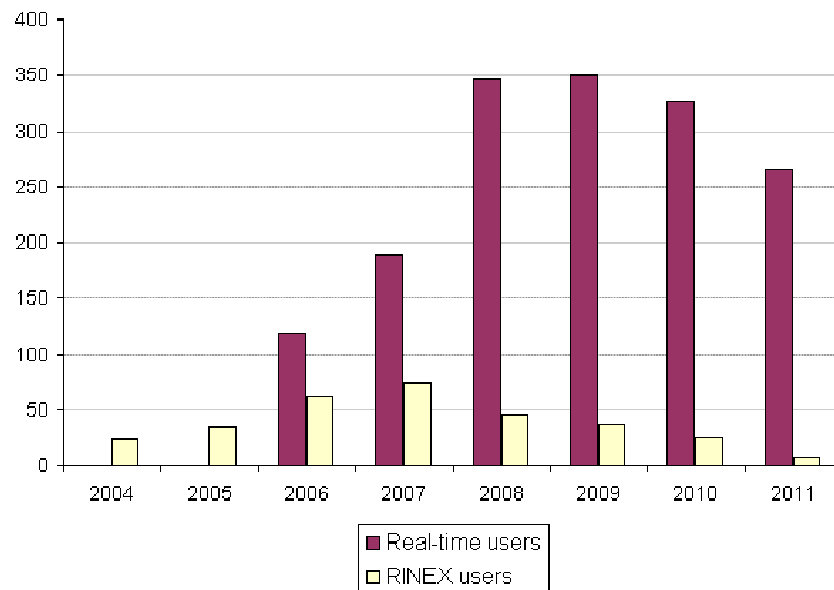
# SIGNAL positioning service



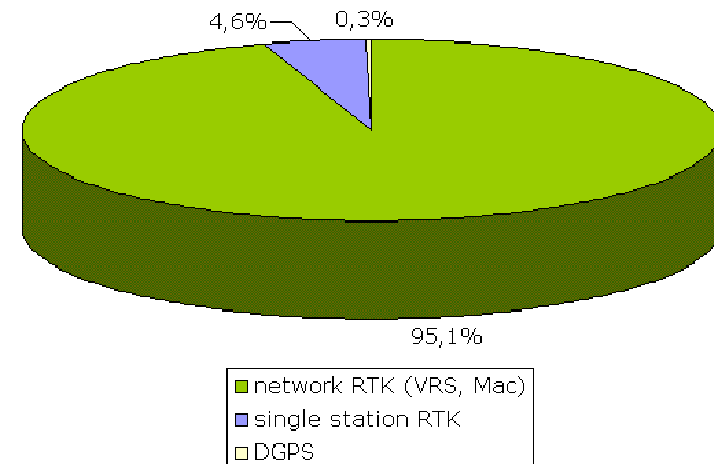
- 15 stations
- + 5 Austrian
- + 1 Hungarian
- + 6 Croatian
- + 5 test Italian

# SIGNAL positioning service

- Daily processing of data (Bernese software ) from 2010
- Payable from 2010 (100 €/month for unlimited RTK/VRS)



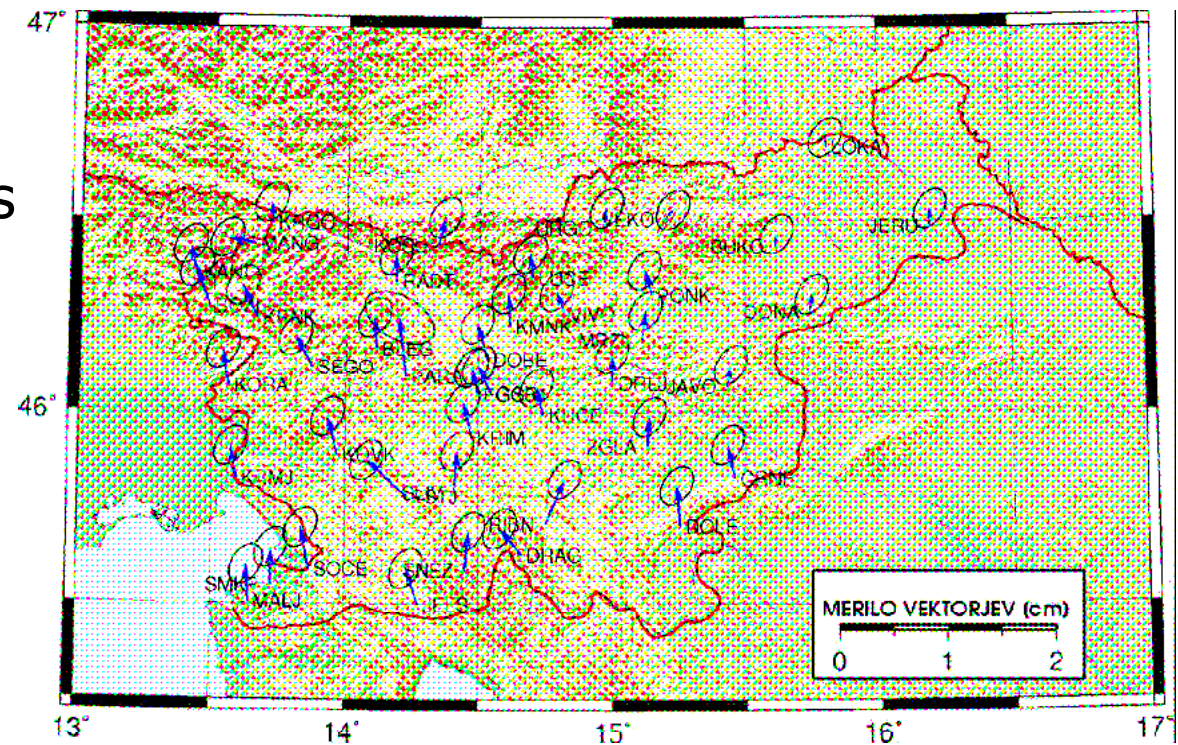
Nr. of users



Usage of services in 2010

# Horizontal reference system

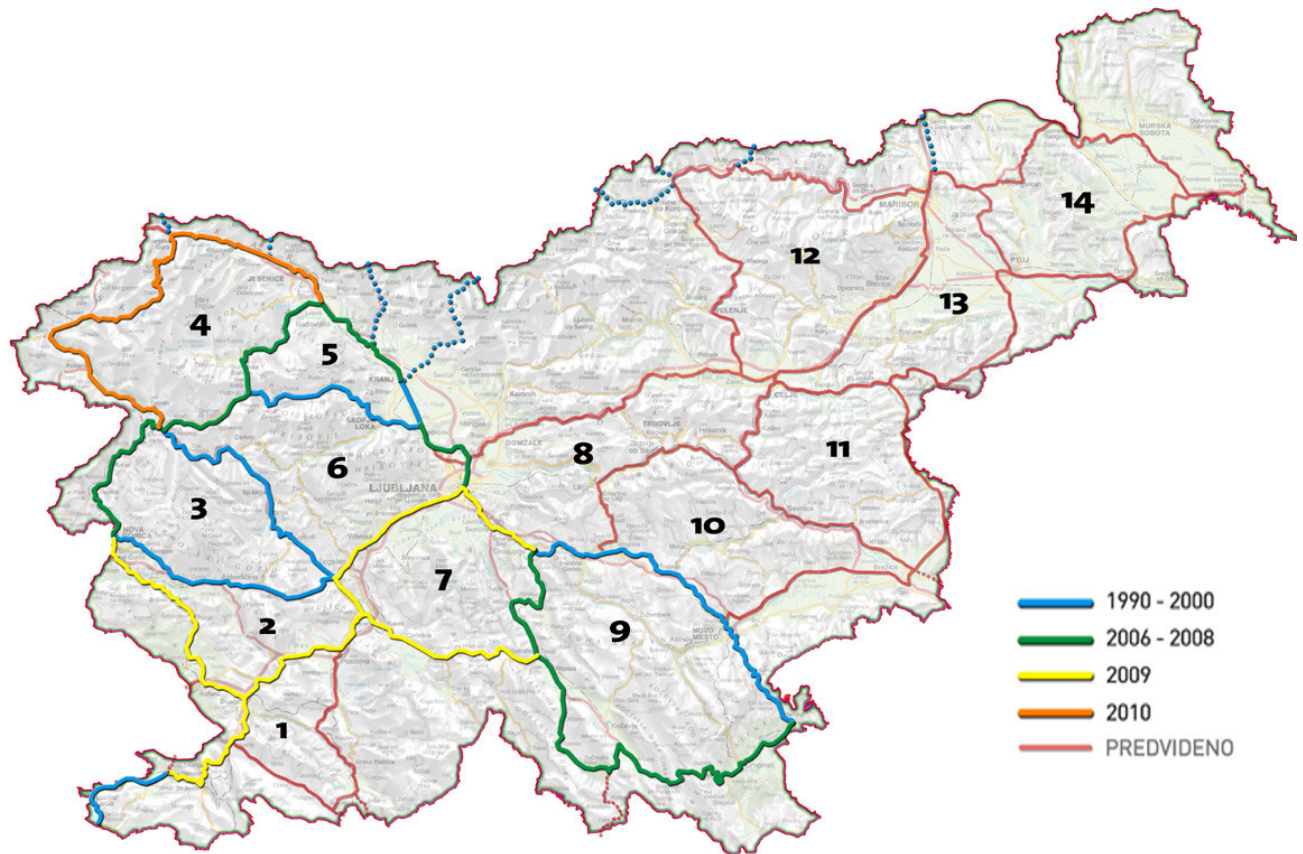
- **Preliminary geokinematic model of Slovenia**
- Only campaign measurements
- 70 points used
- Calculated in ITRF2005
- Bernese GPS software





# Height and gravimetric system

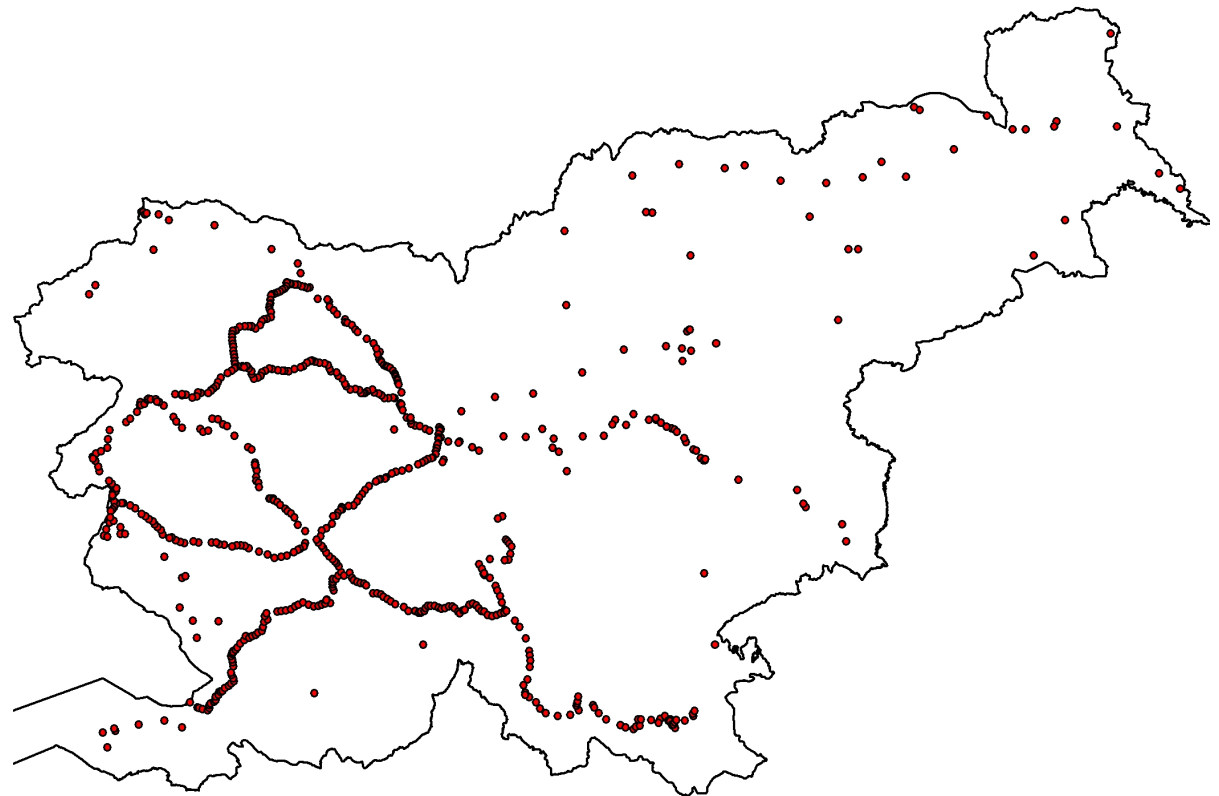
- Levelling
  - 130 km in 2007
  - 100 km in 2008
  - 230 km in 2009
  - 150 km in 2010
- 37 % of all measurements finished
- RMS: 0,64 mm/km
- Std. Dev. 1,07 mm/km
- Till 2016 ????



# Height and gravimetric system

## ■ Gravimetry

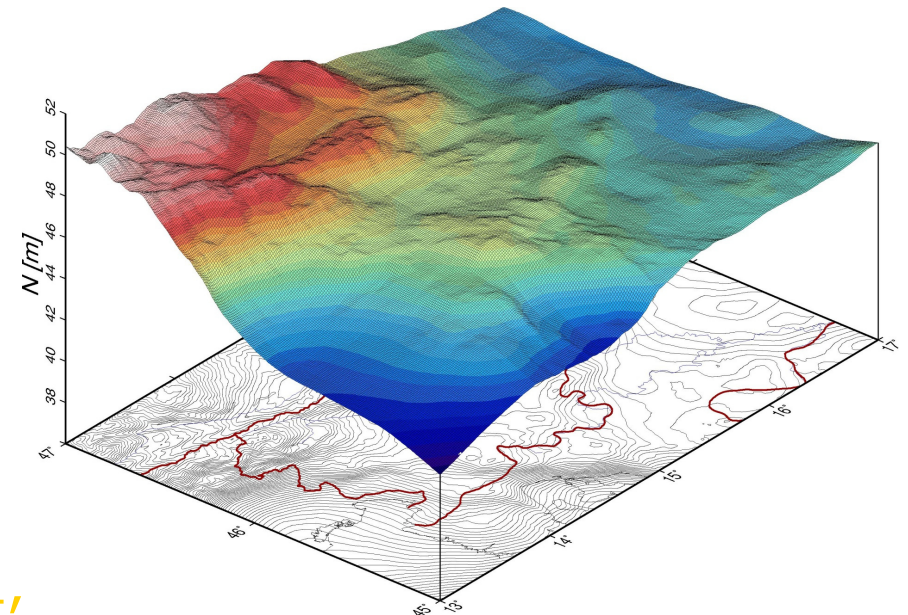
- More than 700 points measured (from 2006)
- New relative gravimeter purchased in 2010



# Height system and geoid

New test geoid calculated

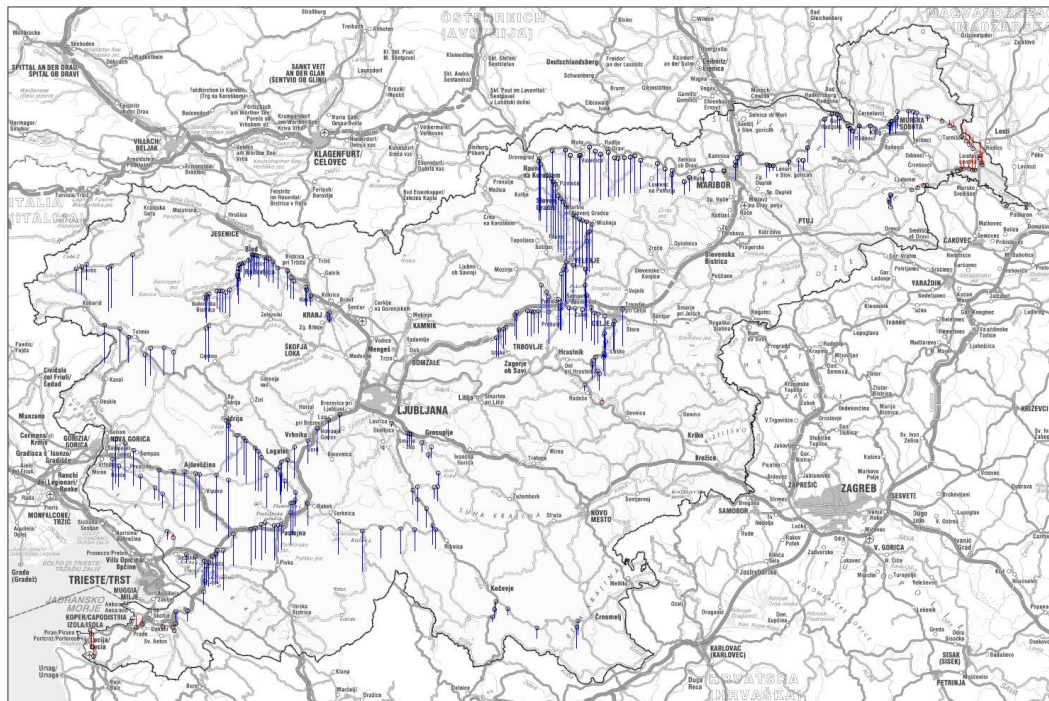
- Cooperation with Statens Kartverk (Norway)
- Gravimetric method
- 23 collocation points → height reference surface
- Merging national DEM and SRTM data
- 347 control points (GPS/levelled)



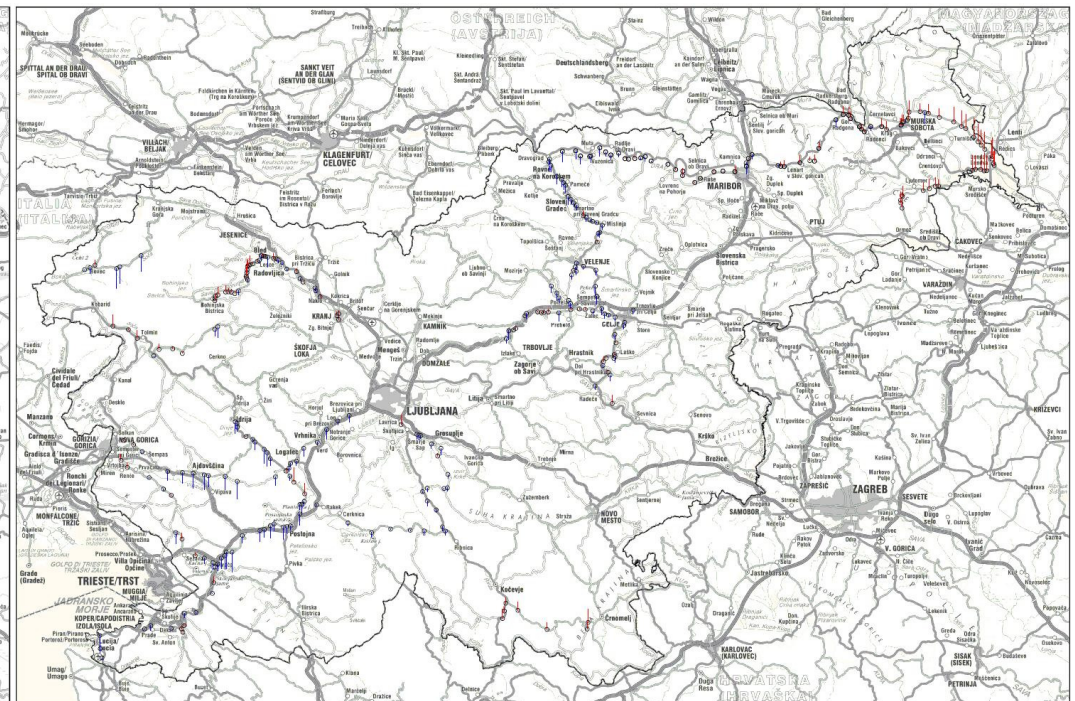


# National report of Slovenia

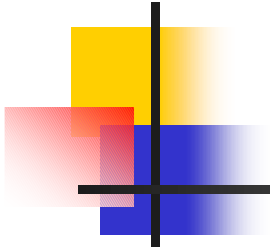
Geoid model	mean [m]	max. [m]	min. [m]	std. dev. [m]
old solution from 2000	-0,1078	0,0987	-0,2897	0,0816
new test solution 2010	-0,0024	0,0935	-0,1002	0,0351



Solution 2000



New test Solution 2010



**Thank you for your attention**