

Ministry of Justice of Georgia National Agency of Public Registry (NAPR)

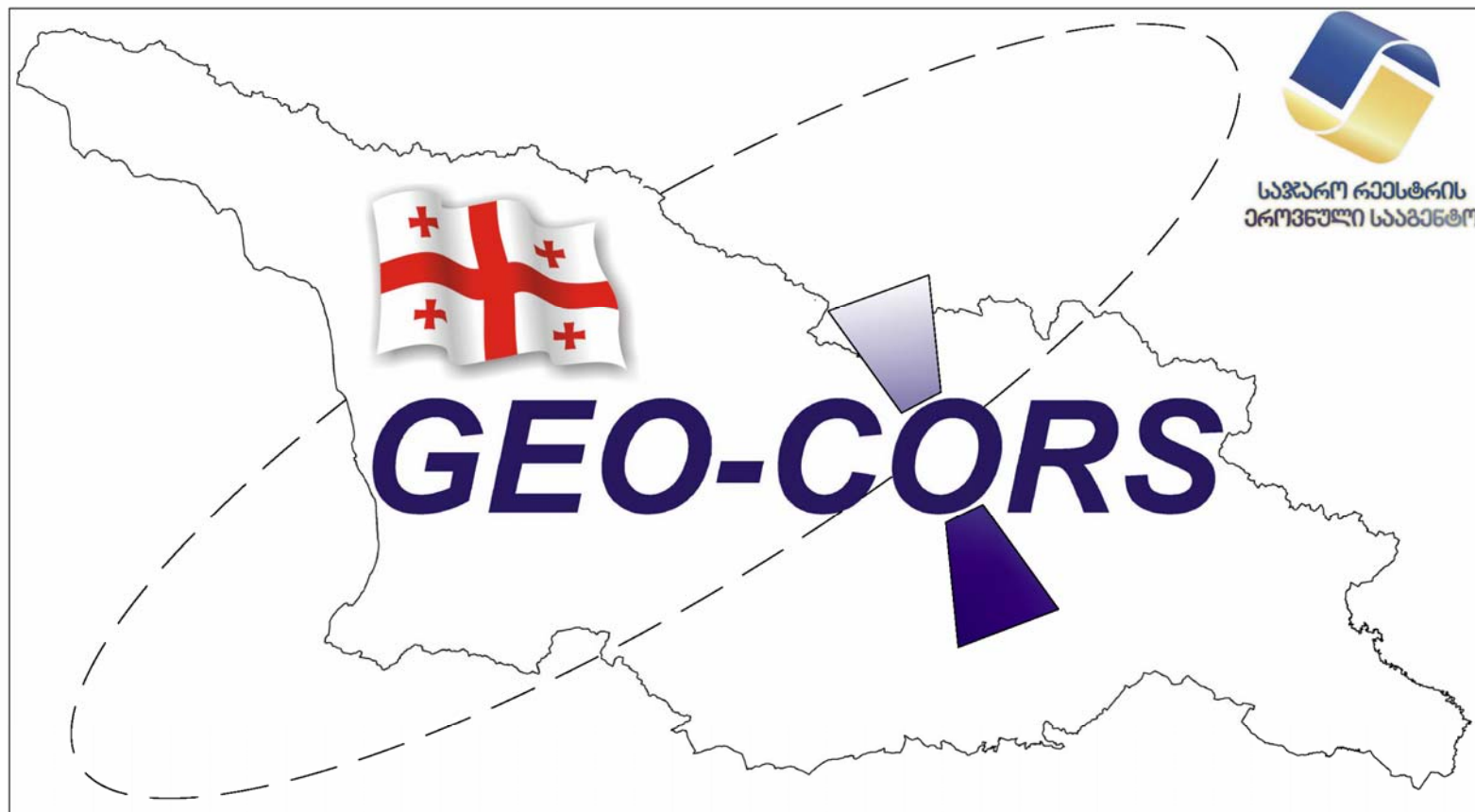


www.napr.gov.ge

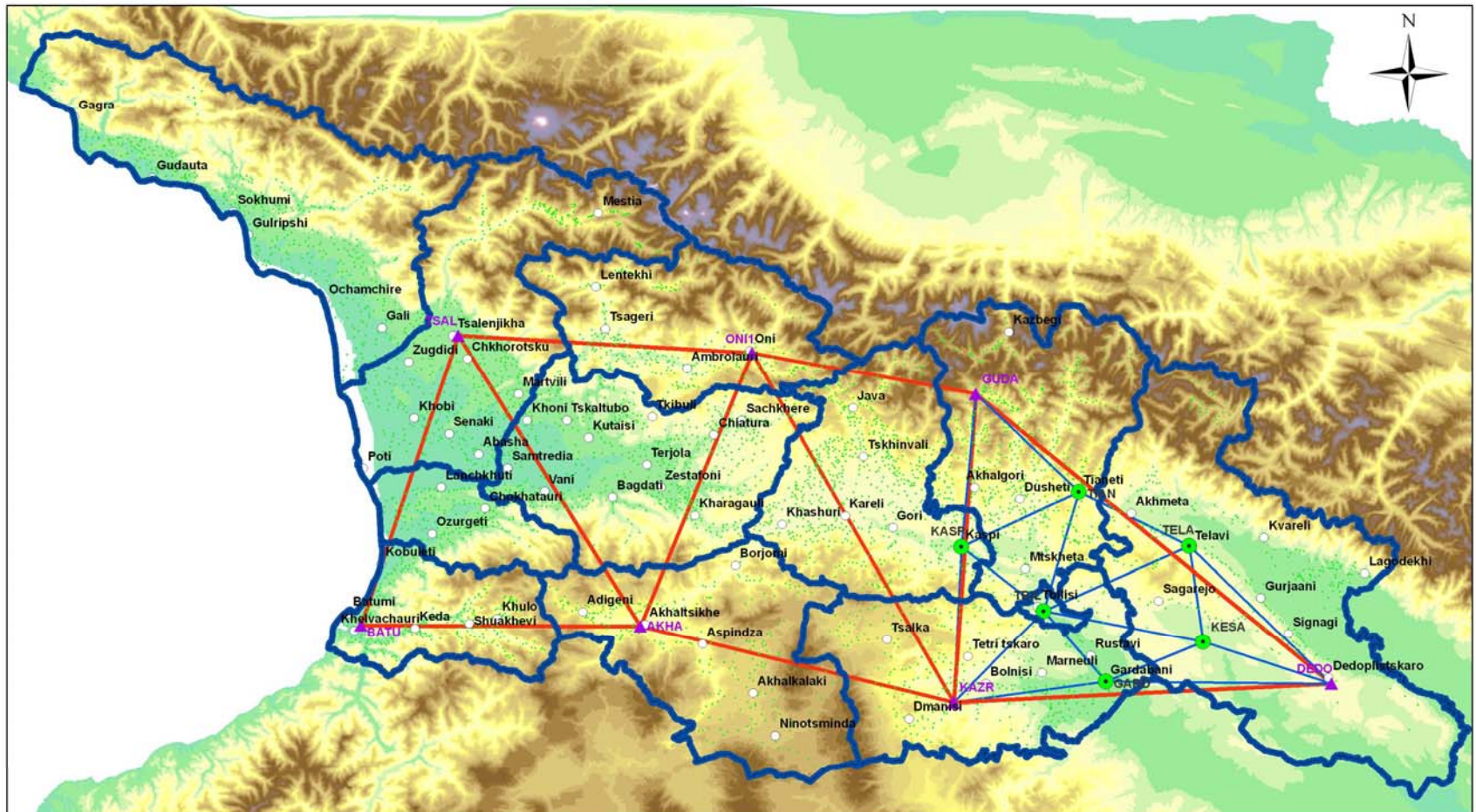
**Head of Geodesy and Cartography Division
Galaktion Hahubia**



**NATIONAL AGENCY
OF PUBLIC REGISTRY**



A&B-class stations



NATIONAL AGENCY
OF PUBLIC REGISTRY

6 A-class stations



NATIONAL AGENCY
OF PUBLIC REGISTRY



A-class stations system



NATIONAL AGENCY
OF PUBLIC REGISTRY

6 B-class stations





Leica AR25

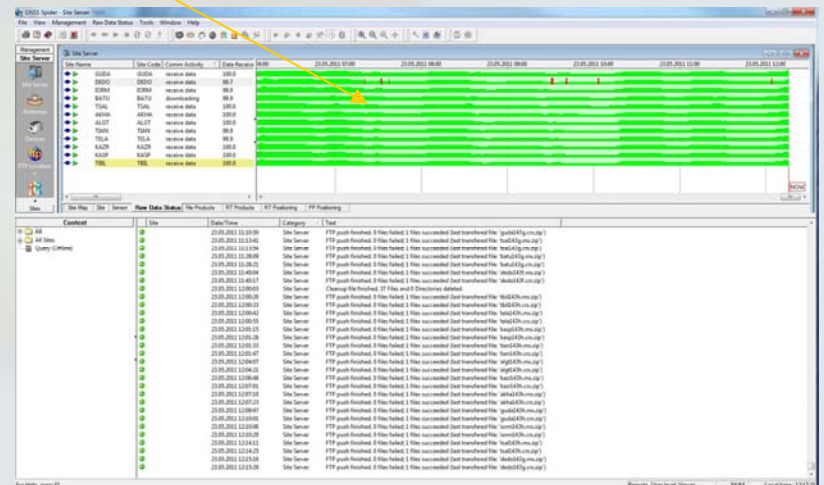
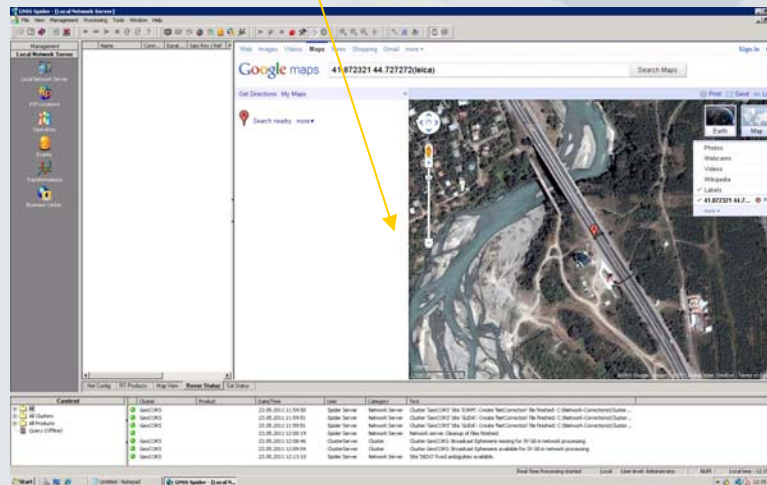
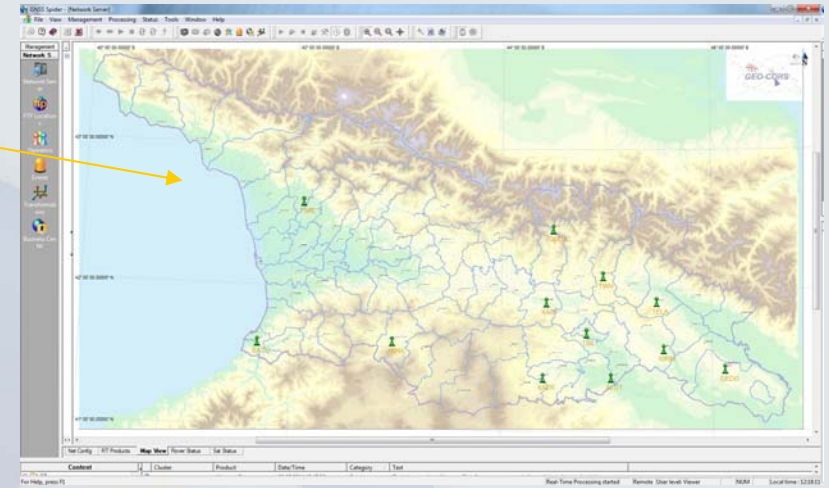


Leica GRX1200 Series For permanent reference stations



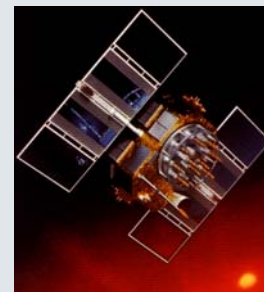
NATIONAL AGENCY
OF PUBLIC REGISTRY

Control Center Spider

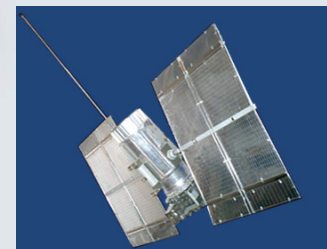


GNSS

- Navstar/GPS – US
- GLONASS – Russia
- Galileo – EU (future)



US - GPS

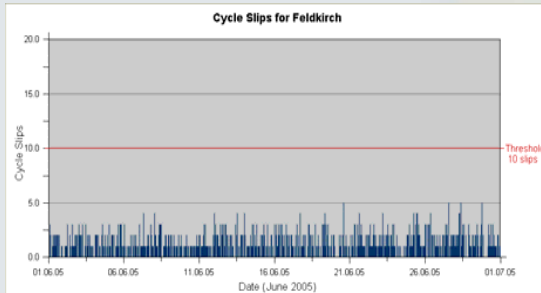
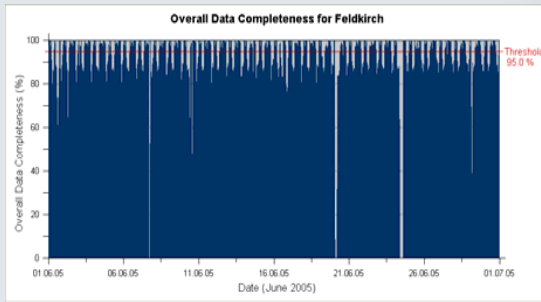
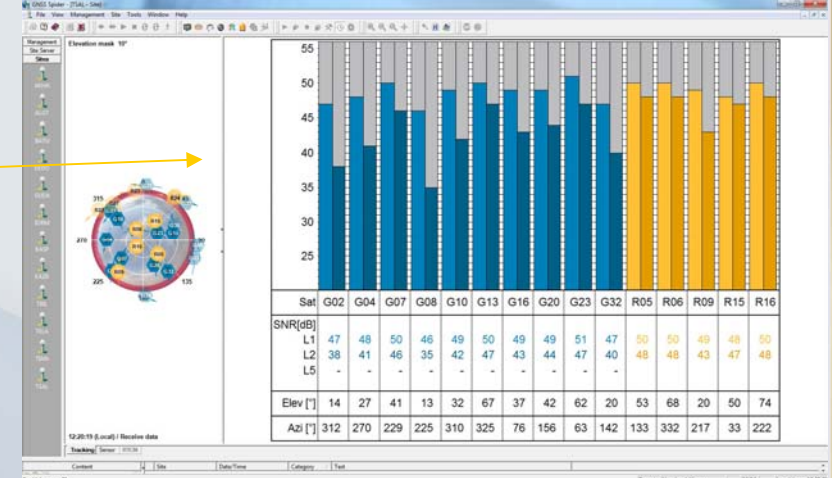
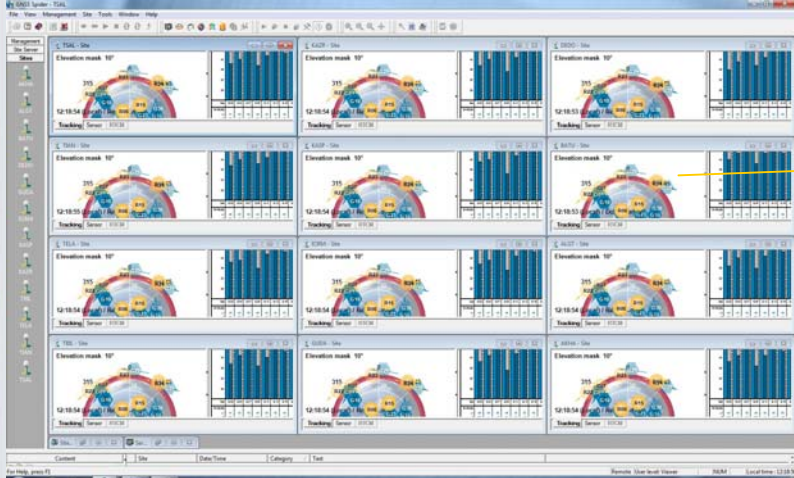


Russia - GLONASS

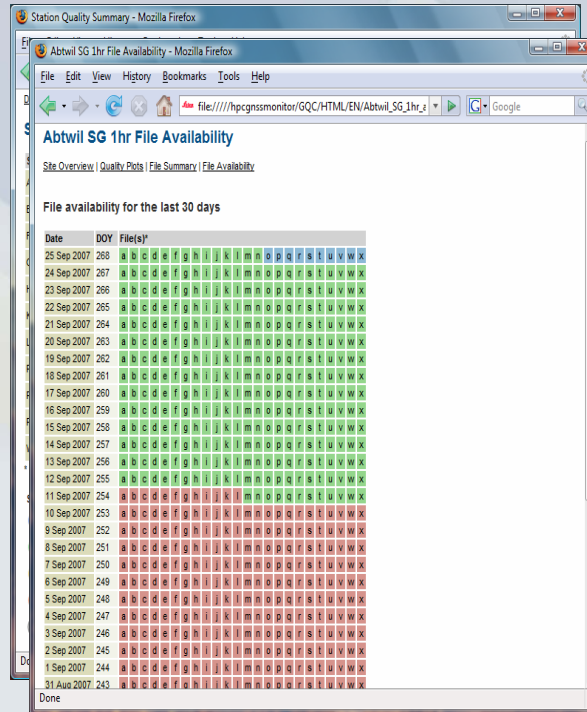


EU - Galileo

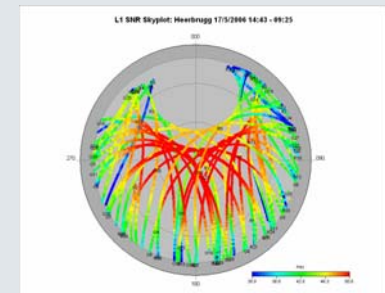
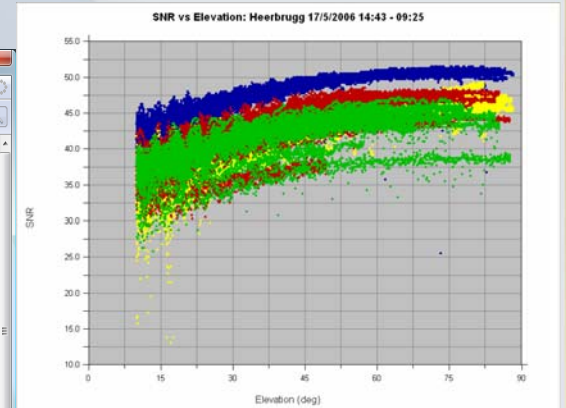




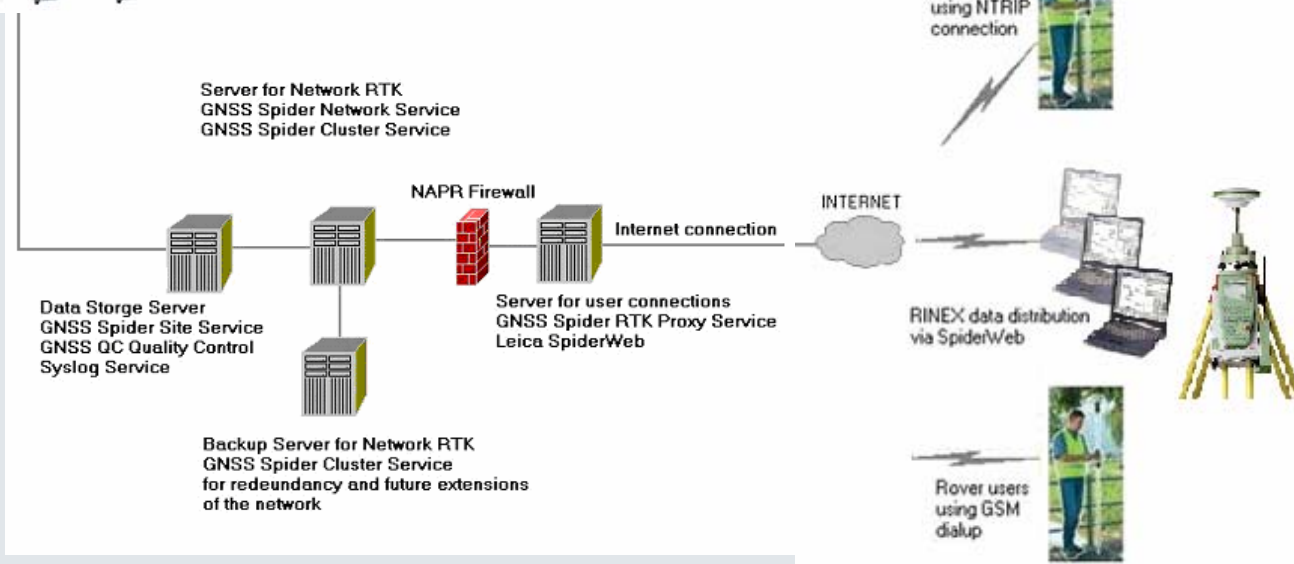
Graphs of **Data Completeness** and **Cycle Slips** generated by automatic processing of 1 hour RINEX files



Sample of the **Summary, Quality Plots** and **File Availability** sections of the customizable web page

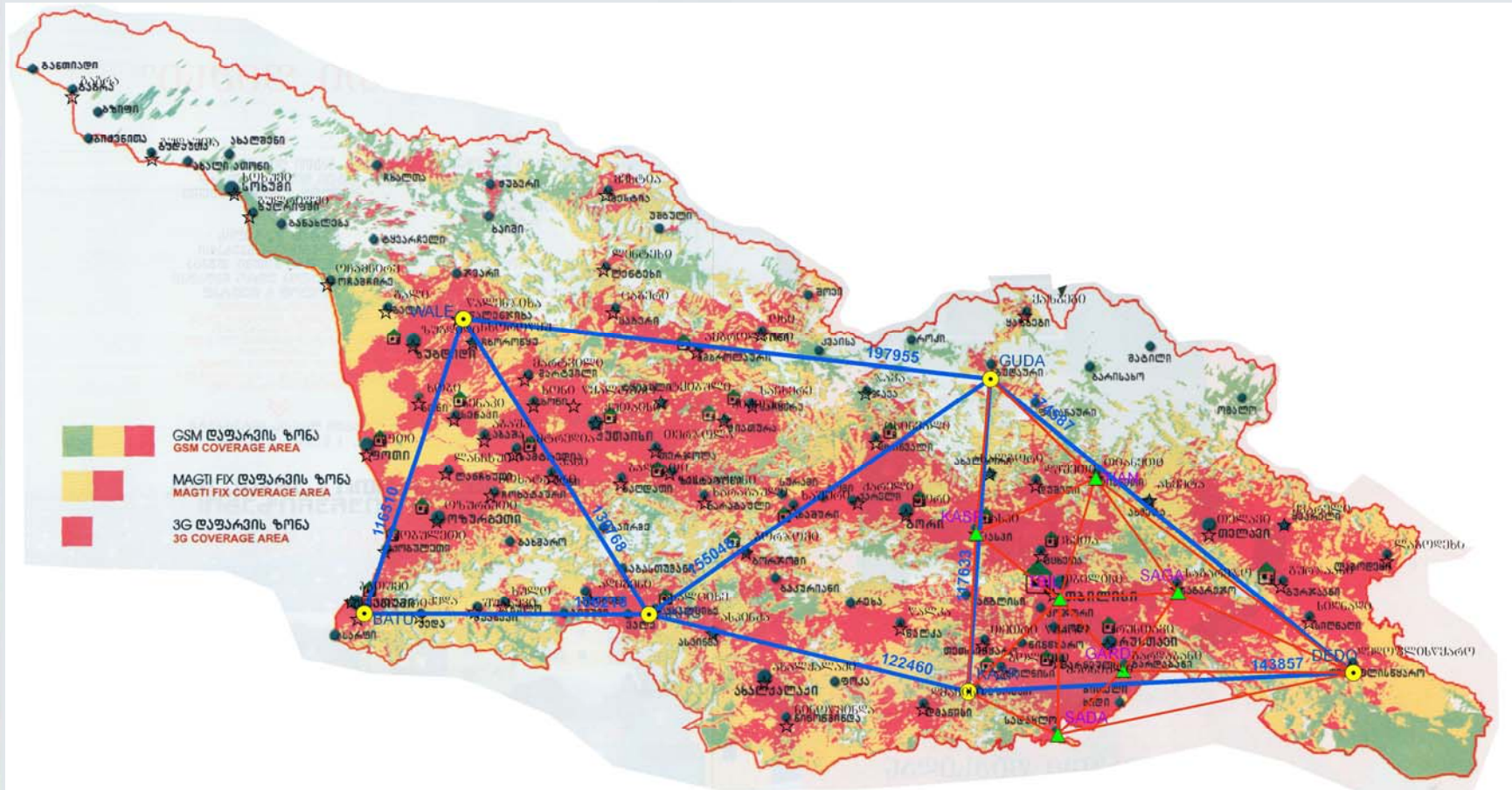


NATIONAL AGENCY OF PUBLIC REGISTRY



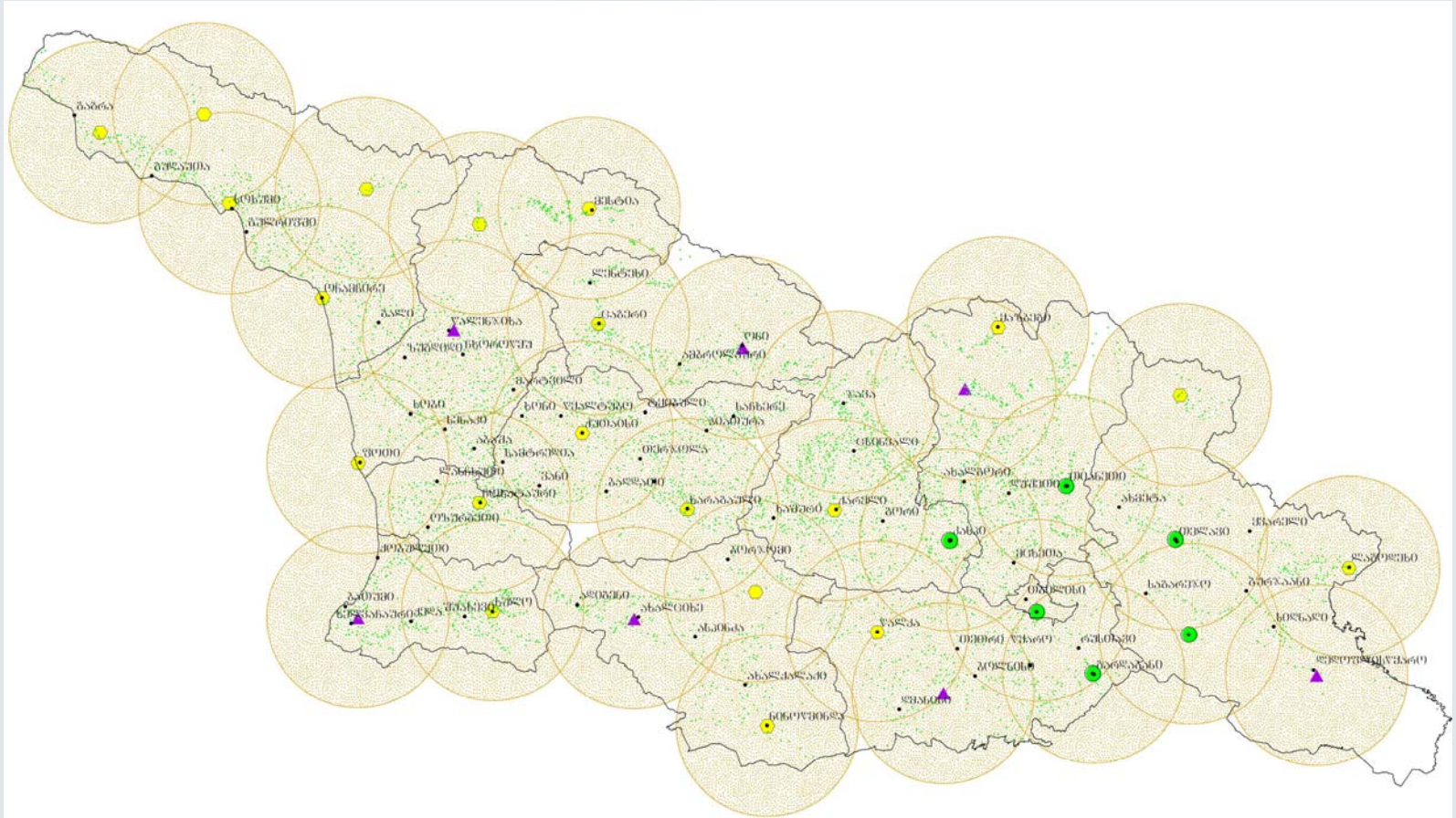
**NATIONAL AGENCY
OF PUBLIC REGISTRY**

GSM coverage

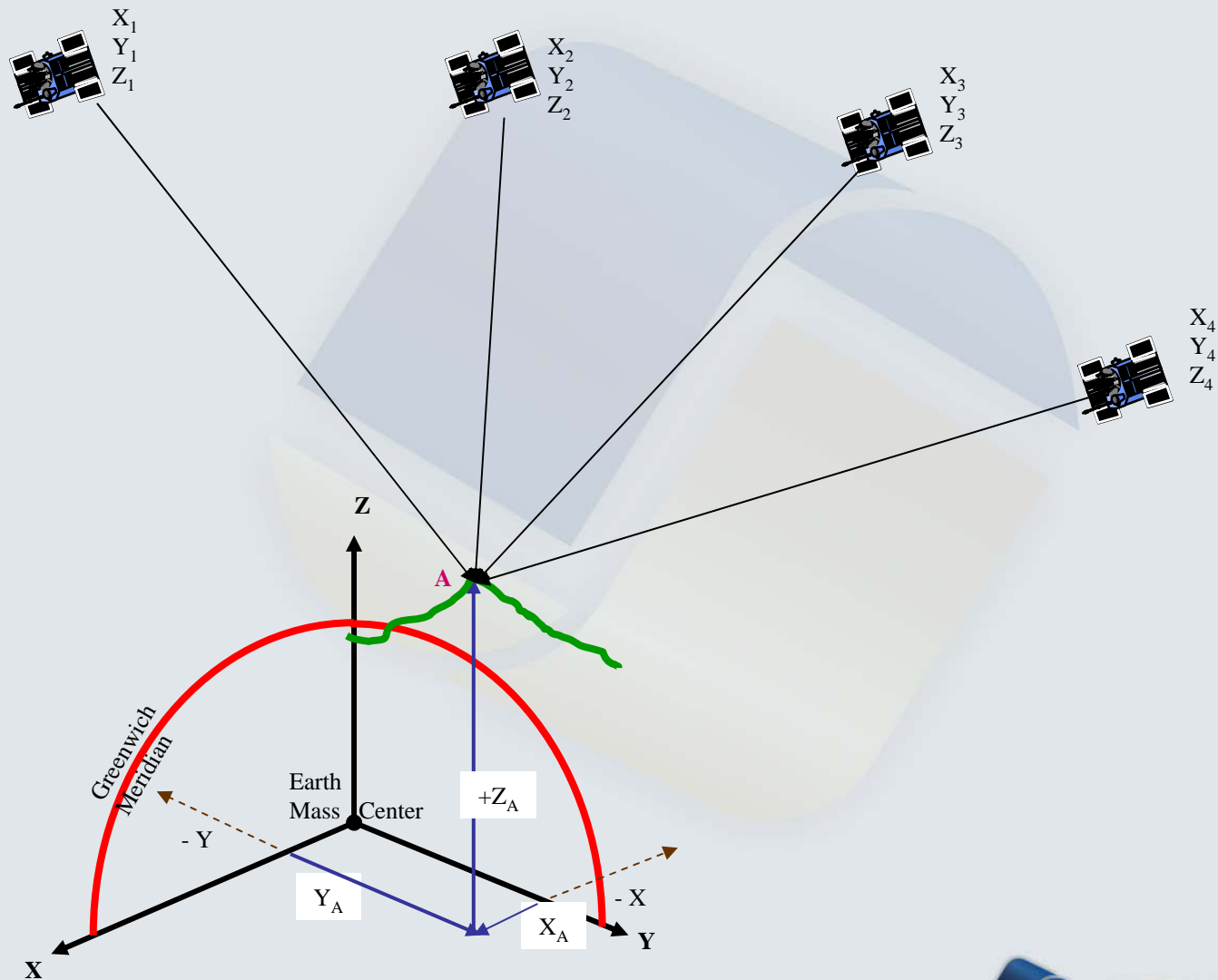


NATIONAL AGENCY
OF PUBLIC REGISTRY

Future plane 33 stations



3-D coordinates



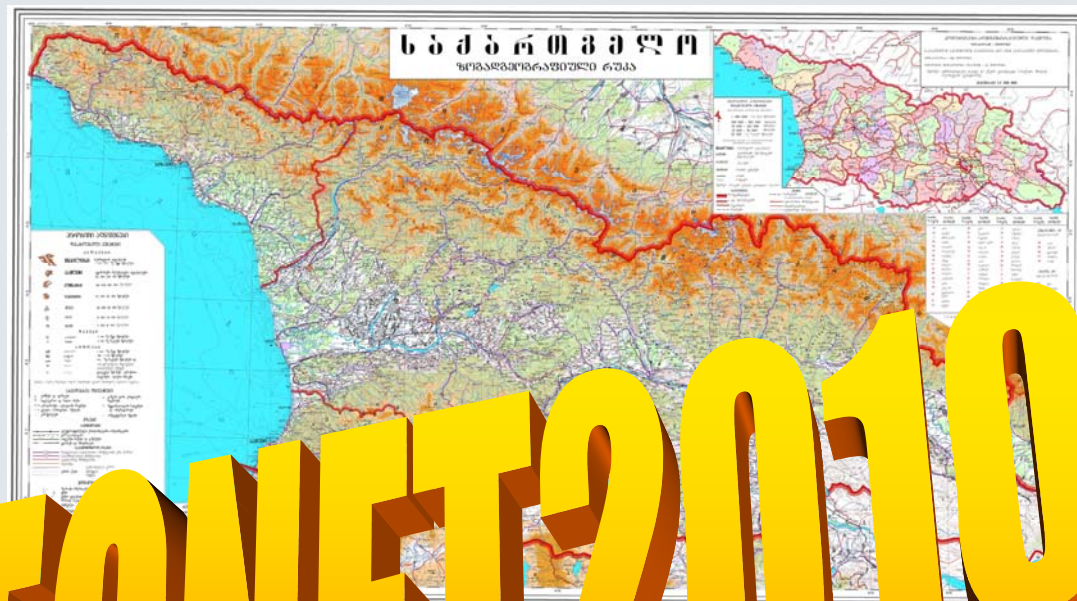
Creation of zero network

GEONET2010



NATIONAL AGENCY
OF PUBLIC REGISTRY

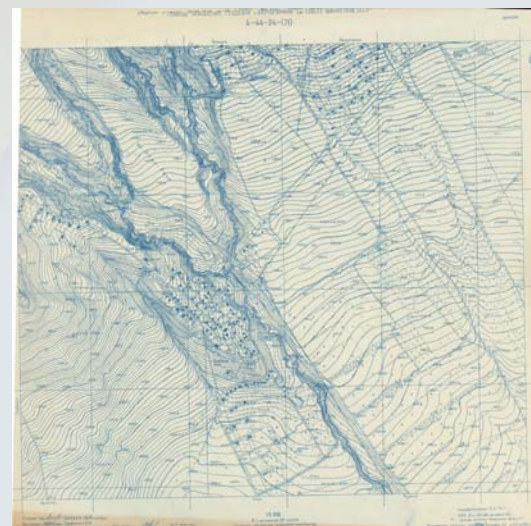
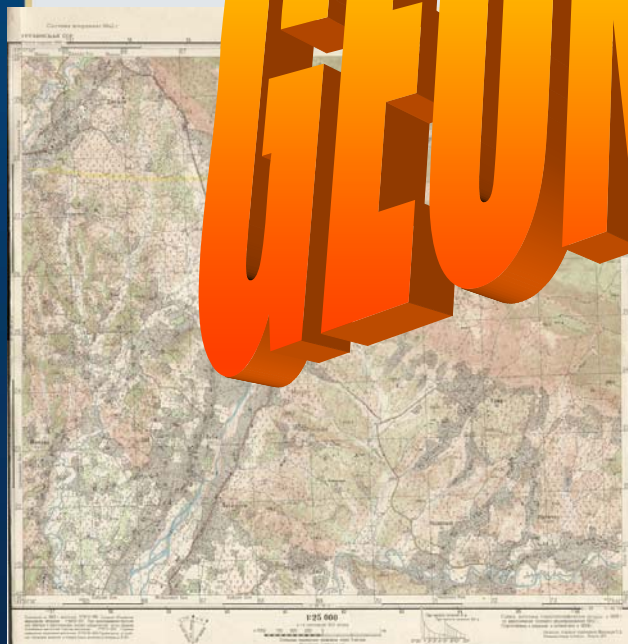
WGS 84



GEONET2010

local coordinate system

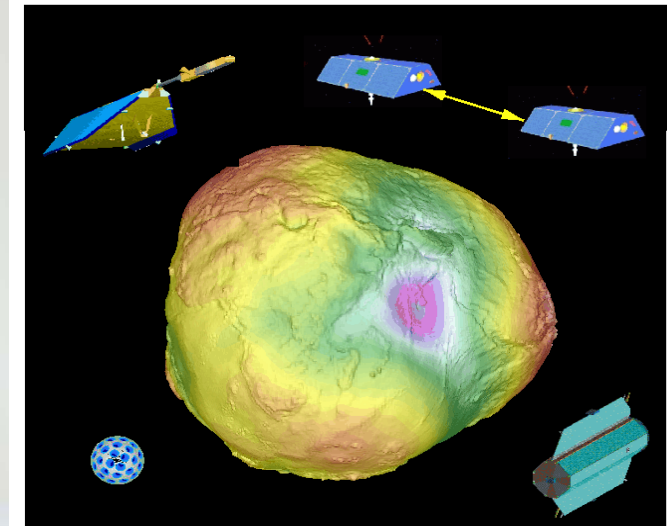
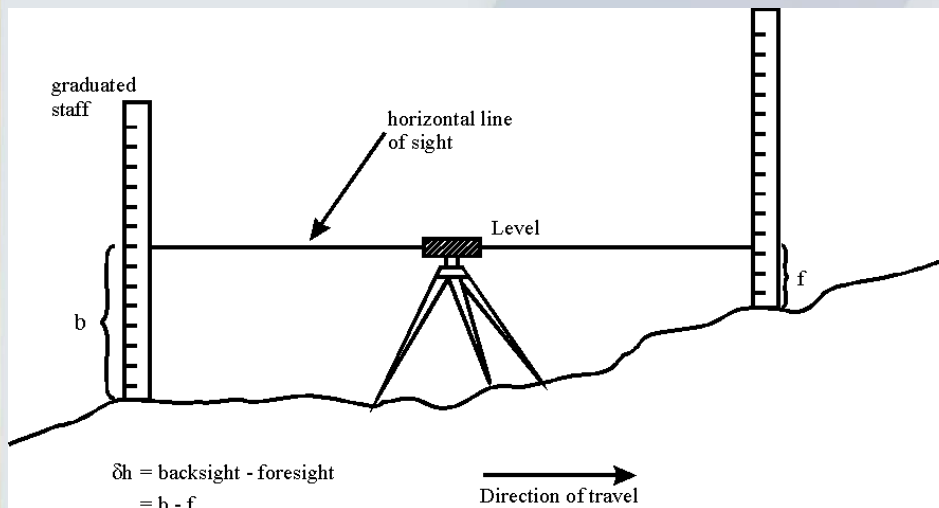
Krasovs



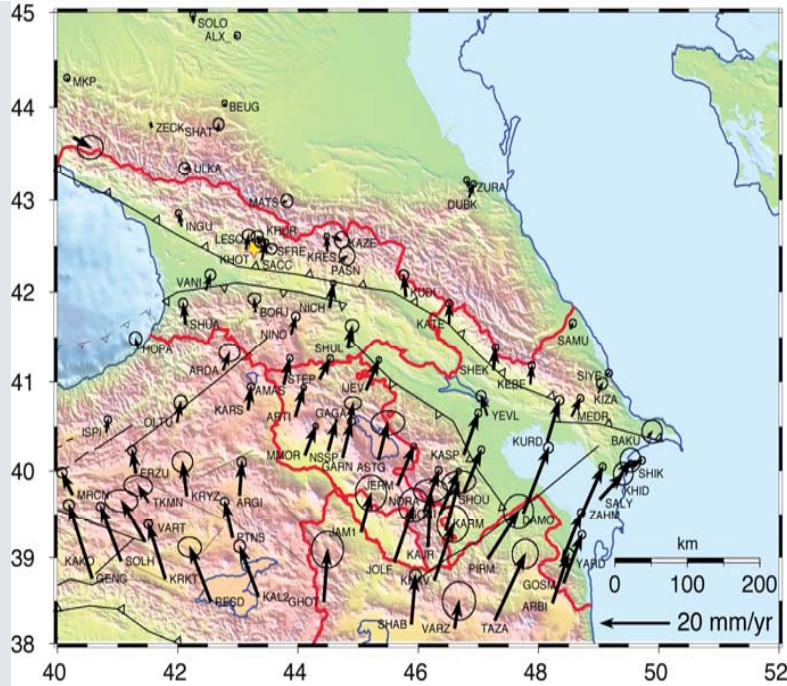
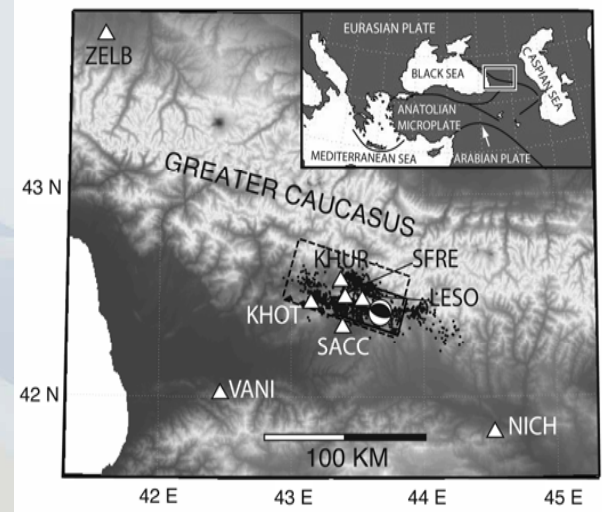
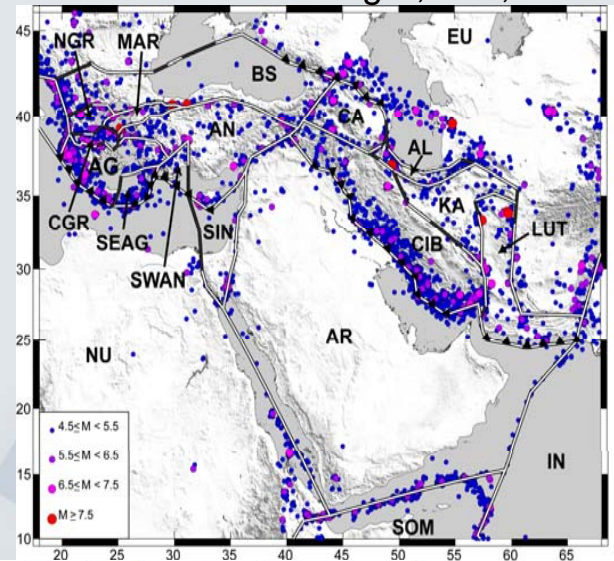
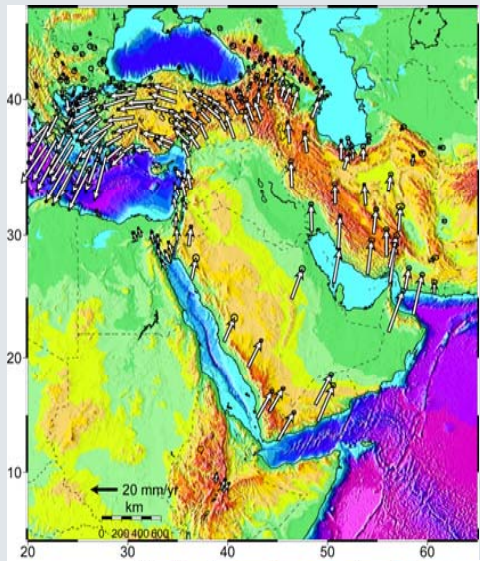
GEONET 2010



Leveling Gravimetry



Robert Reilinger, MIT, Cambridge, MA, **USA**



- Future studies include:
 - Continued observations of GPS survey points to constrain better fault slip rates.
 - Dense GPS profiles across the MCT to determine locking depth (to constrain largest earthquakes to be expected) and possible aseismic fault slip.
- Continuous GPS Network to identify possible strain anomalies (prior to seismic events, and/or aseismic slip events). Temporal variations in interseismic strain accumulation contribute directly to earthquake forecasting.

Geo-CORS

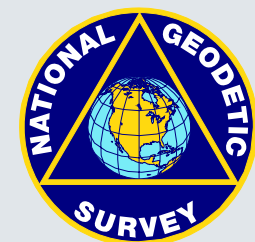
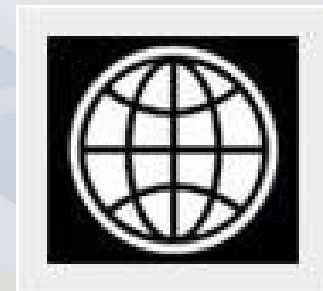
Summary : Ideal Support for Multiple Applications

National Mapping Producers

- Cadastre
- GIS
 - Utility Companies
 - Telecoms
 - Transport Departments (fleet management...)
- Infrastructure & Road construction
- Natural Resource Management (Mining, Exploration)
- Scientific (atmospheric modelling, seismic monitoring,...)
- Meteorological Agency, Weather forecasts
- Environmental Agencies
- Agriculture
- Natural Hazards & Disaster Management



NATIONAL AGENCY
OF PUBLIC REGISTRY



Thank you !!!



NATIONAL AGENCY
OF PUBLIC REGISTRY