

GOP re-processing of EUREF sub-network

J. Douša and P. Václavovic

[*\(jan.dousa@pecny.cz\)*](mailto:jan.dousa@pecny.cz)

Geodetic observatory Pecný

Research Institute of Geodesy, Topography and Cartography

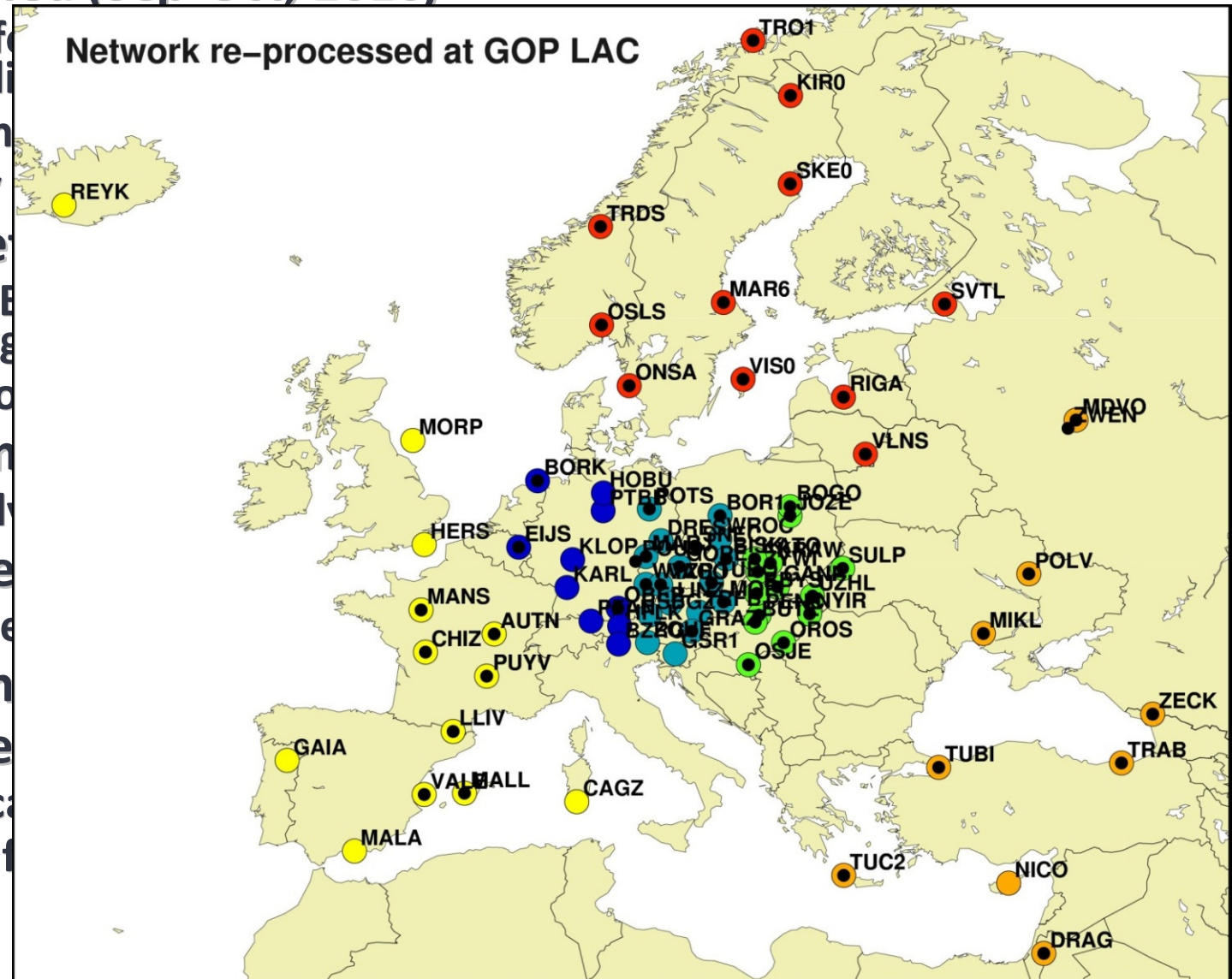
EUREF Symposium, May25-27, 2011, Chisinau

Introduction to GOP-repro1

- **Reprocessing system setup (Sep, 2010)**
- **1st run completed (Sep-Oct, 2010)**
 - Initial checks for the routine settings, data and products availability, solution stability
 - Some problems resolved
 - First raw daily time-series
- **2nd run completed (Nov-Dec, 2010)**
 - Improved RINEX data handling according to minimize data removal (problem using old version of teqc software)
 - Weekly solution implemented and provided, submitted
- **Benchmark campaign (Jan, 2011)**
 - Processed daily, weekly for CRD+TRP, submitted
- **2nd run for weekly re-combination (Mar, 2011)**
 - Fixed outlier rejection in weekly combination, re-submitted
- **Long-term combination – crd+vel (Mar, 2011)**
- **3rd run expected (Apr-May, 2011 ?)**
 - Some ‘historical’ stations with short-term period included
 - Considering a full EPN or globally referenced solution

Introduction to GOP-repro1

- Reprocessing system setup (Sep, 2010)
- 1st run completed (Sep-Oct, 2010)
 - Initial checks for solution stability
 - Some problems
 - First raw daily
- 2nd run completed
 - Improved RINEX (problem using)
 - Weekly solutions
- Benchmark campaign
 - Processed daily
- 2nd run for week
 - Fixed outlier re
- Long-term com
- 3rd run expected
 - Some 'historical'
 - Considering a f

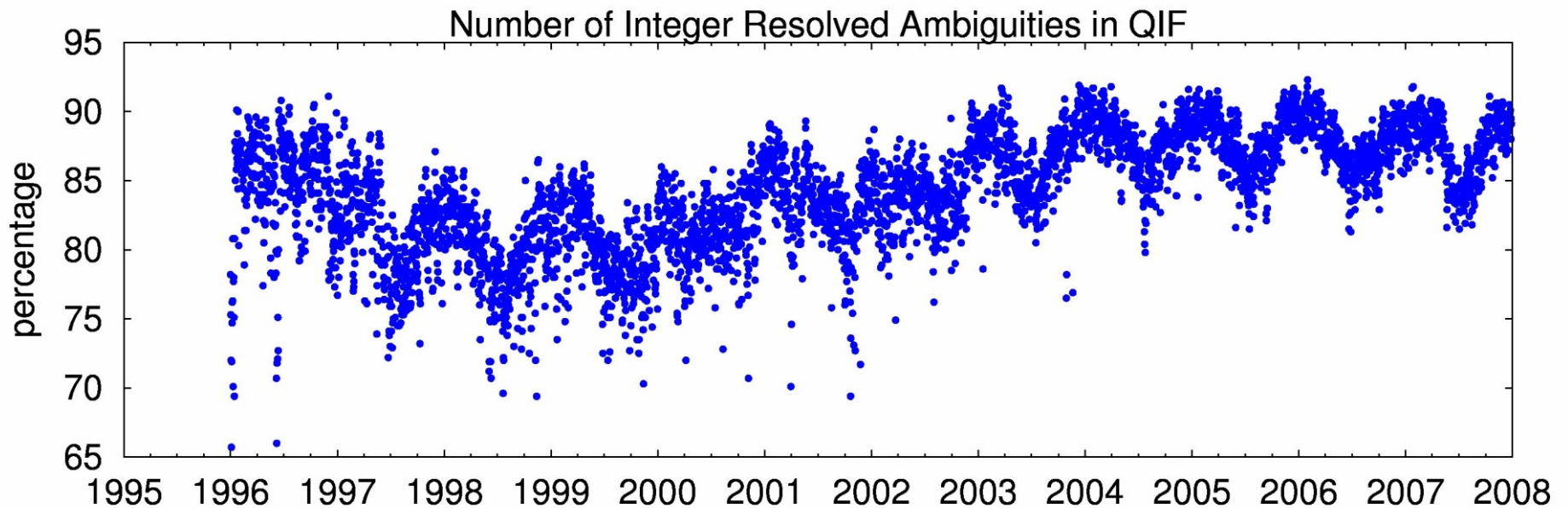


Results and their applications

- some problems identified
- daily/weekly raw time-series generated
- used for testing EPN cumulative solution datum
- a multi-year combination generated
- applied in discontinuity plots and their comparisons
- evaluation of tropospheric parameter time-series

Some characteristics

Ambiguity solution using QIF strategy:

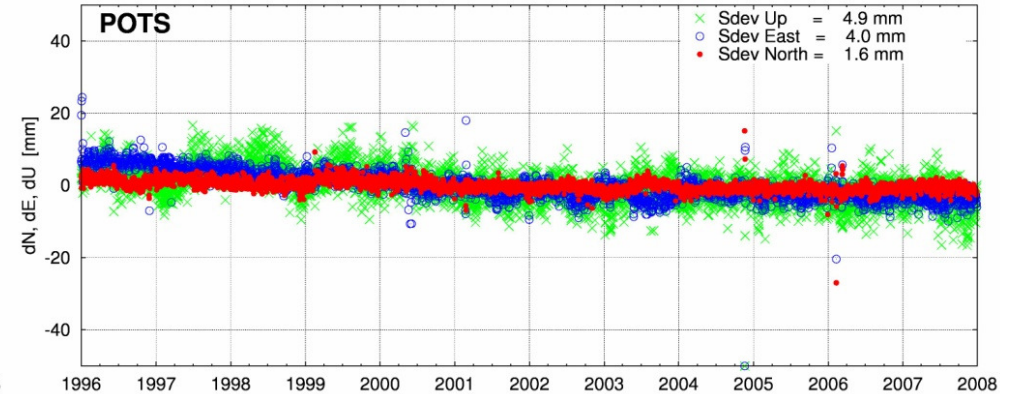
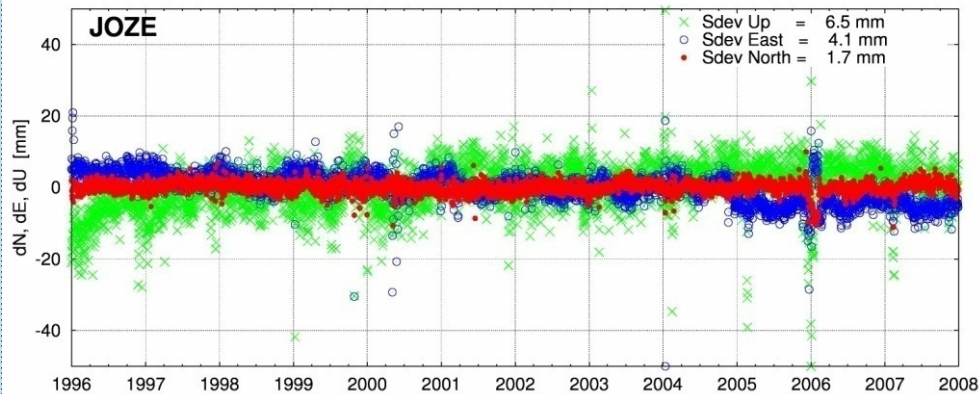


Two specific problems causing crash in GOP-repro1 (solved):
1999:266 ... >50% obs removed -> irrelevant drift in IG1 clocks
2004:101 ... RXOB3 setup wavelength factor 2/1 for G10, but crashed in MAUPRP for station GRAZ (RINEX file corrected).

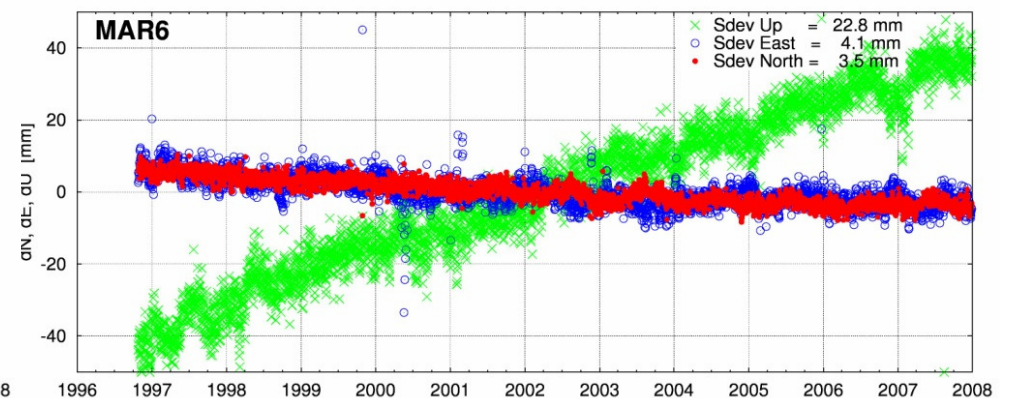
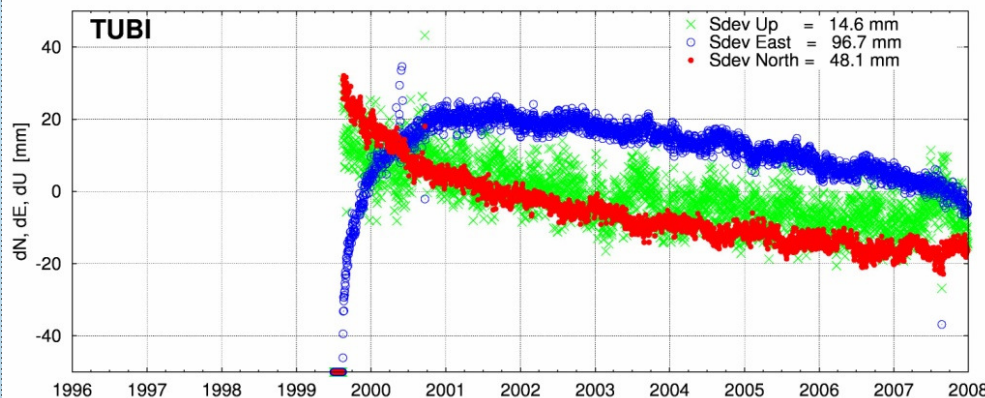
Raw ETRS time-series (1)

For daily solution, GOP applies iterative datum definition, thus daily raw coordinate time-series clearly reveals all the issues

• JOZE & POTS – continuous smooth time-series



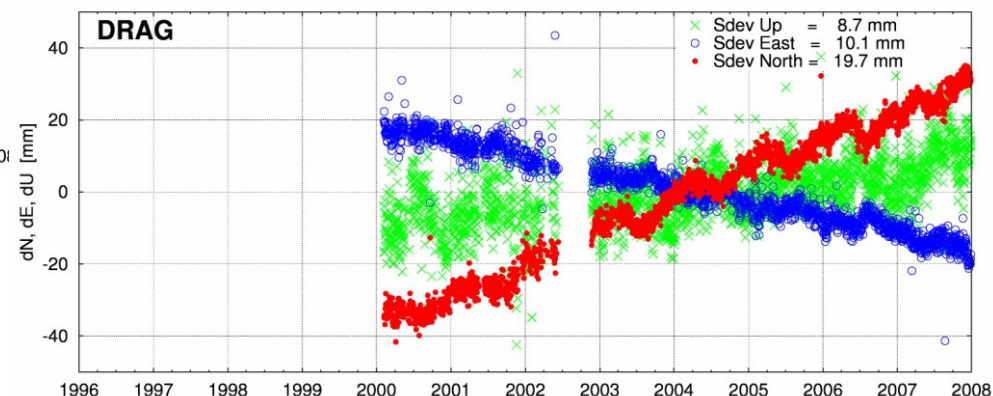
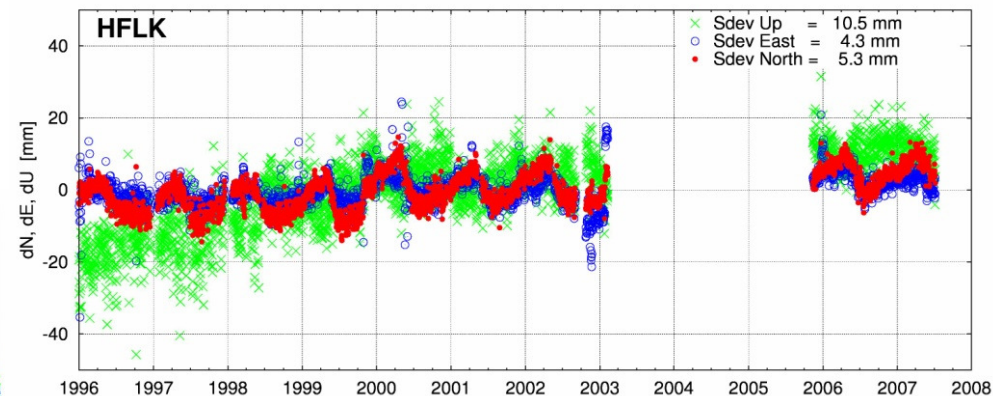
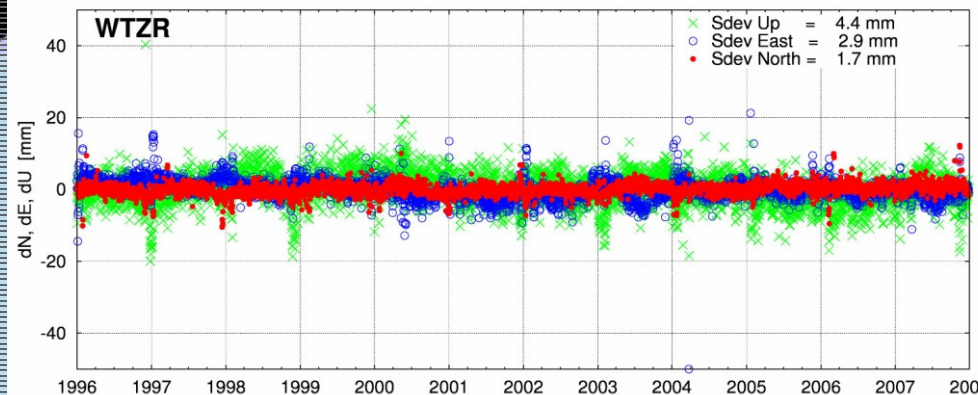
• TUBI – postseismic movement, MAR6 – postglacial uplift



Raw ETRS time-series (2)

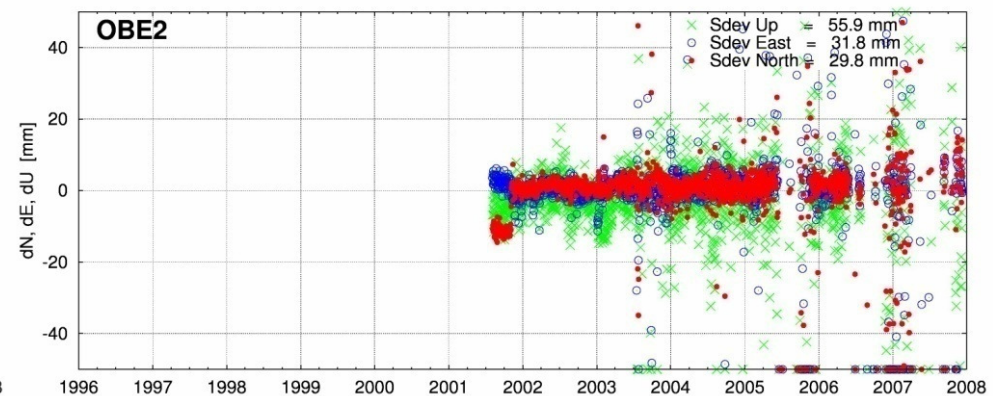
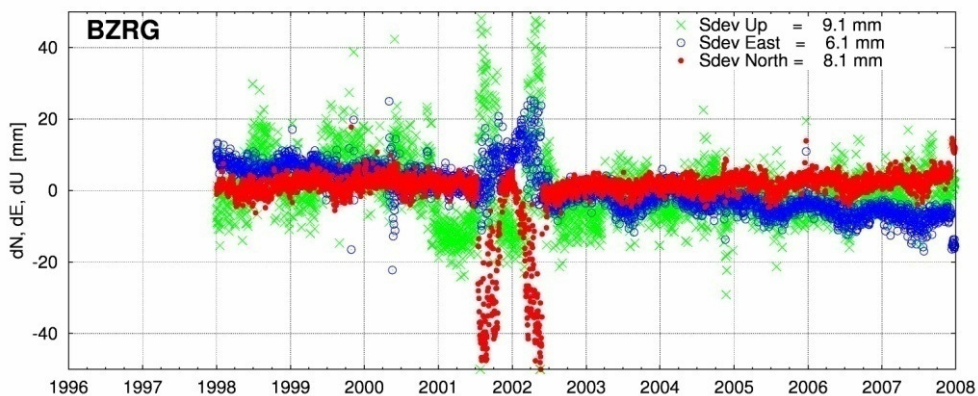
HFLK, WTZR – snow/ice problem

DRAG – other seasonal problem



BZRG – occasional data problem

OBE2 – low quality data

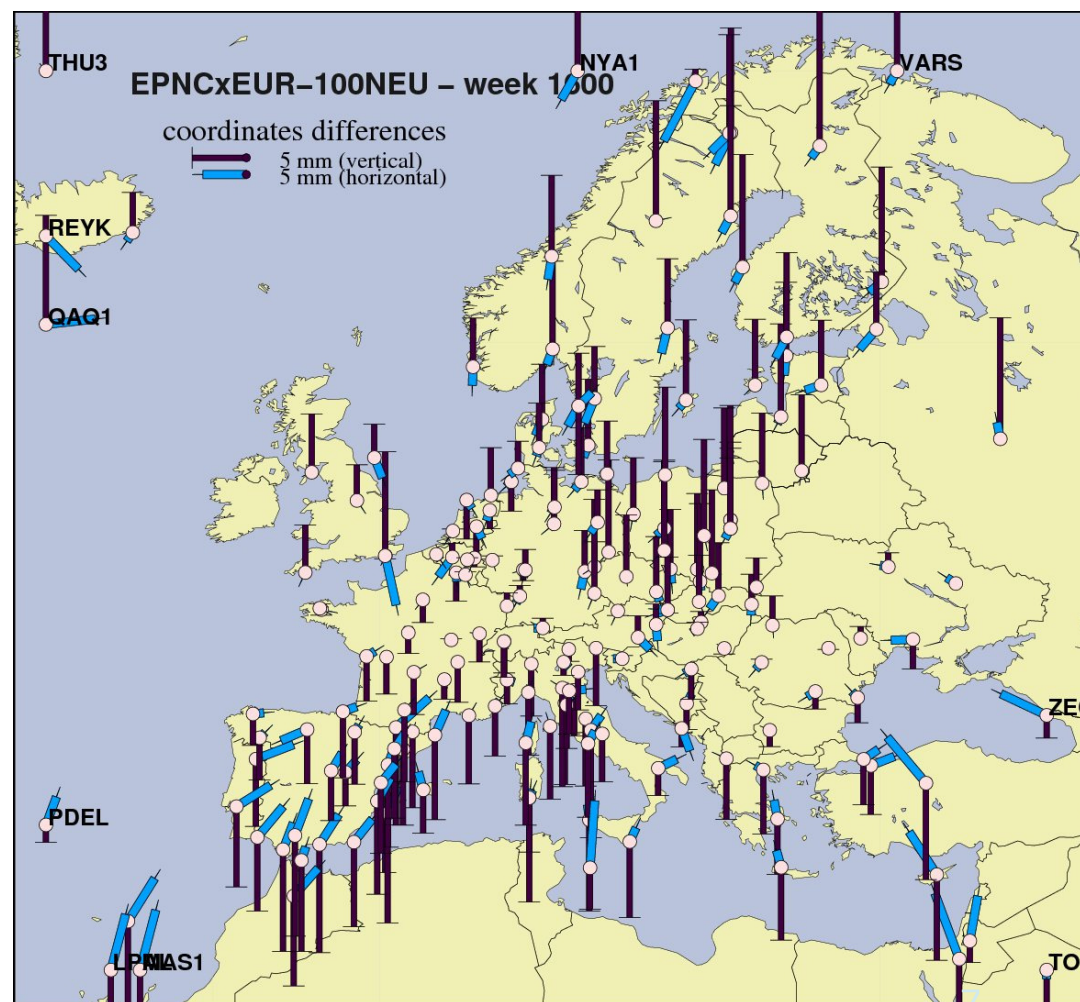


Testing datum of EPN cummulative solution

- **Observed N-S tilt between recent EUREF AC weekly combinations (or EUREF campaigns) and the EPN cumulative solution combination**
- **GOP repro-1 provides a 'homogenous' weekly results to look into history**
- **Compared CRD on weekly basis:**
 - 1a-set EPNC_1300 (CRD+VEL)
 - 1b-set EPNC_1600 (CRD+VEL)
 - 1b-set ITRF2005 (CRD+VEL)
 - 1c-set ITRF2008 (CRD+VEL)
 - 2a-set EUREF AC (weekly CRD)
 - 2b-set GOP repro1 (weekly CRD)
- **Helmert transformations:**
 - NEU / XYZ (on weekly basis)
 - 3-TRA / 3-TRA + 3-ROT + 1-SCL
- **Datum definition assessed by:**
 - All common stations set as fiducial
 - Iteratively select the 'consistent' set
 - Solution numbers per sites applied

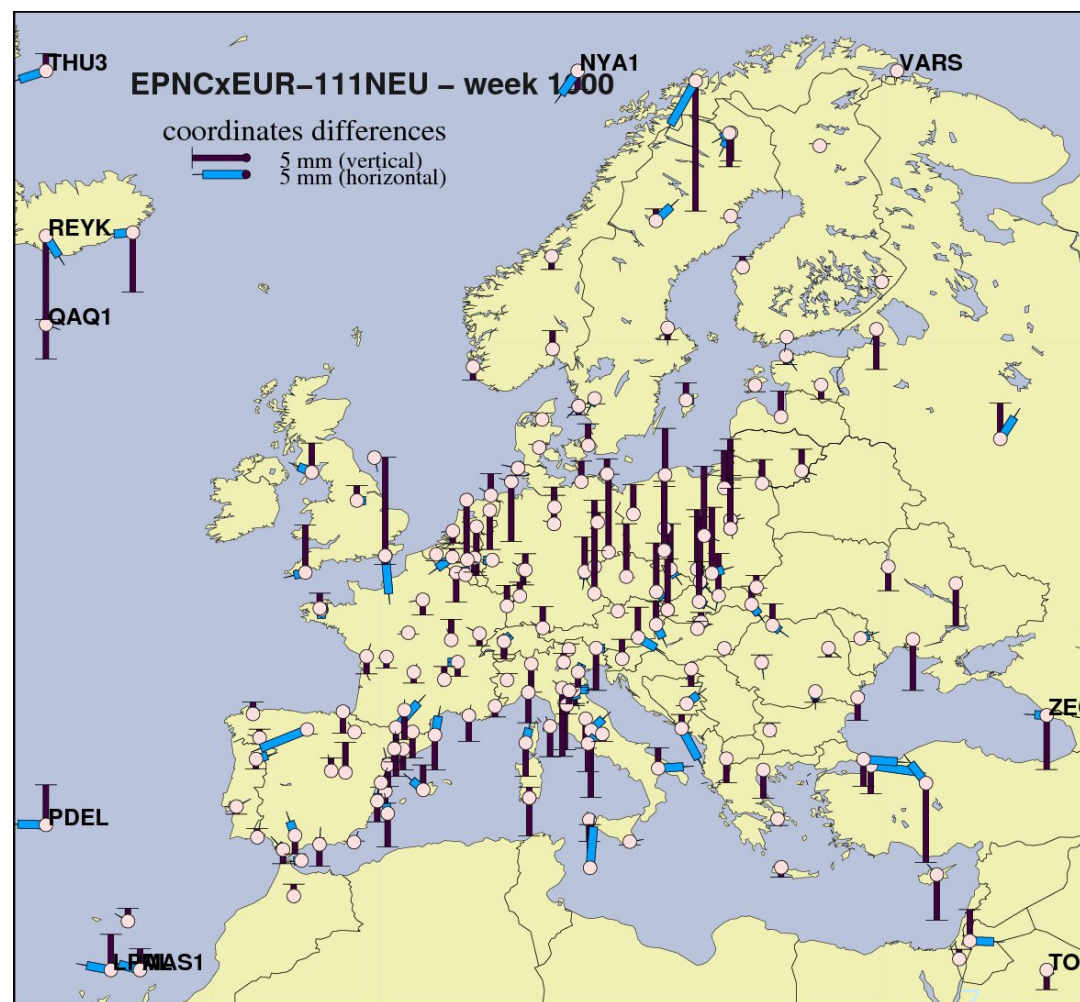
Testing datum of EPN cummulative solution

- **Observed N-S tilt between recent EUREF AC weekly combinations (or EUREF campaigns) and the EPN cummulative solution combination**
- GOP repro-1 provides a 'homogenous' weekly results to look into history
- Compared CRD on weekly basis:
 - 1a-set EPNC_1300 (CRD+VEL)
 - 1b-set EPNC_1600 (CRD+VEL)
 - 1b-set ITRF2005 (CRD+VEL)
 - 1c-set ITRF2008 (CRD+VEL)
 - 2a-set EUREF AC (weekly CRD)
 - 2b-set GOP repro1 (weekly CRD)
- **Helmert transformations:**
 - NEU / XYZ (on weekly basis)
 - 3-TRA / 3-TRA + 3-ROT + 1-SCL
- **Datum definition assessed by:**
 - All common stations set as fiducial
 - Iteratively select the 'consistent' set
 - Solution numbers per sites applied

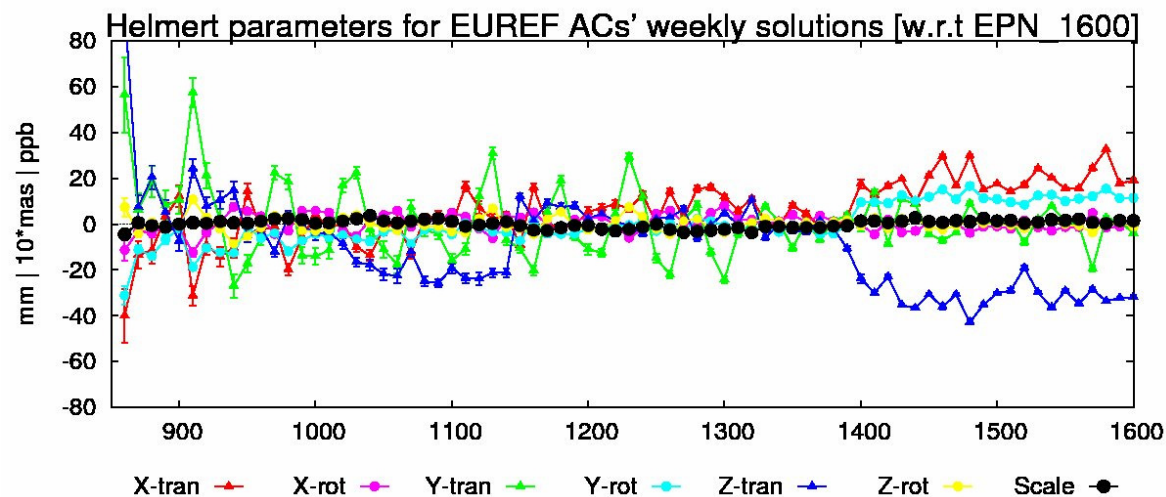
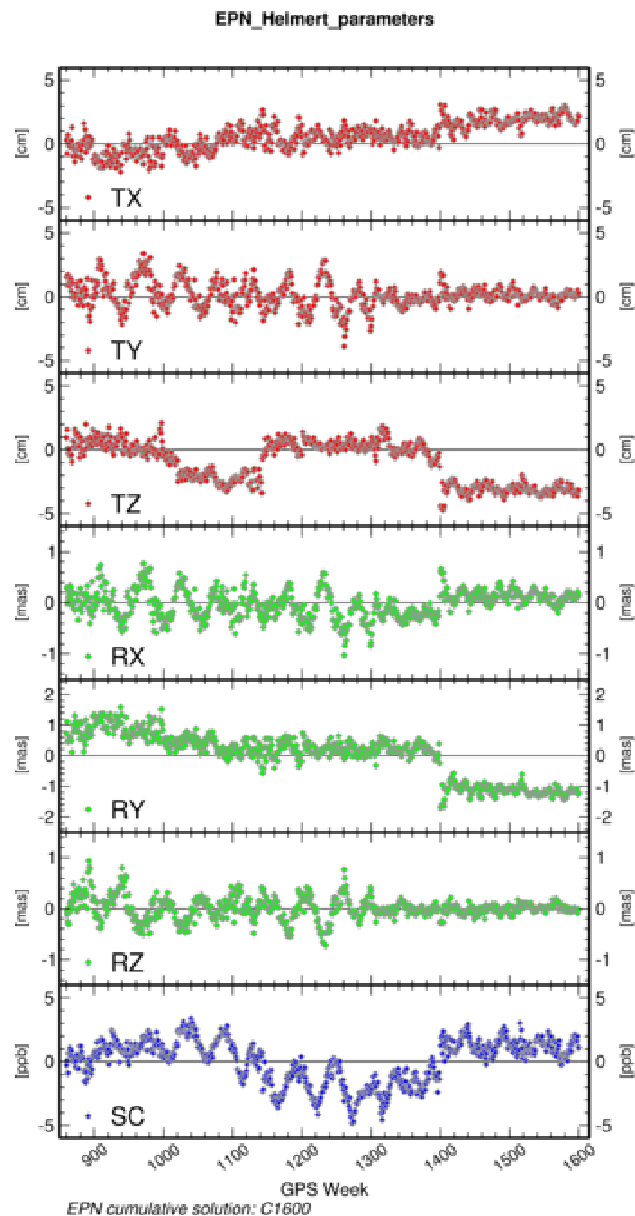


Testing datum of EPN cummulative solution

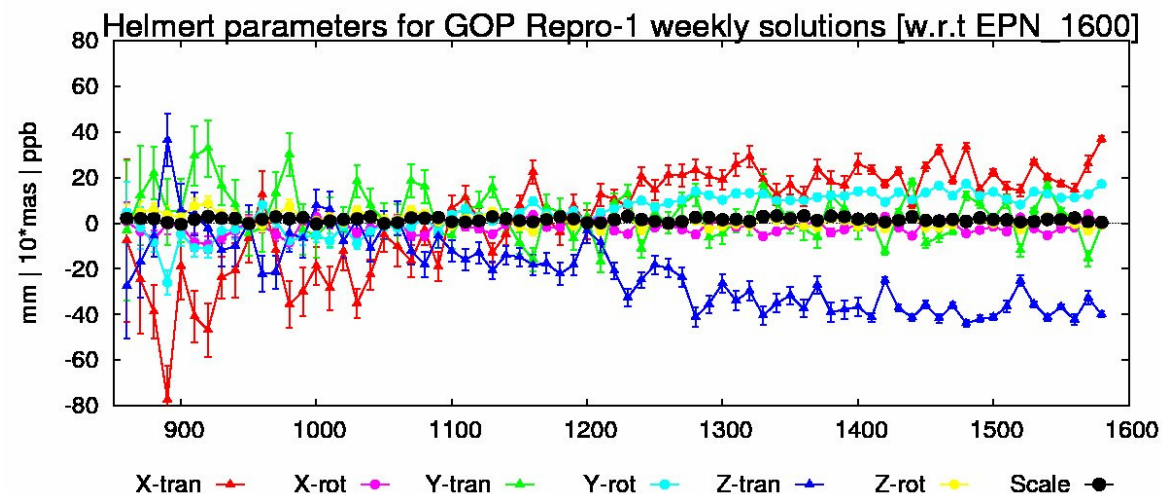
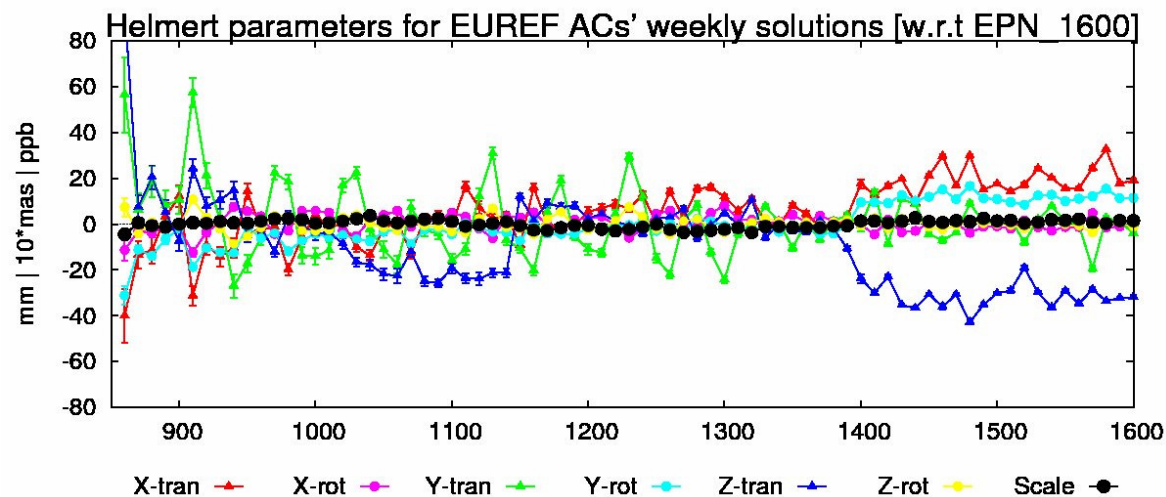
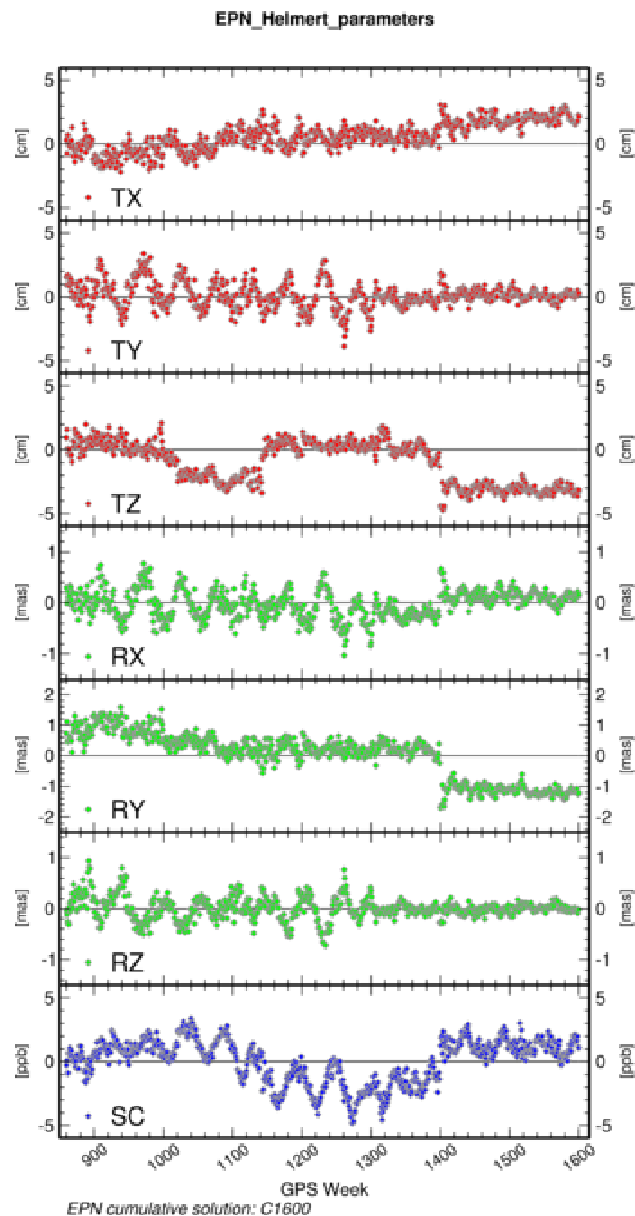
- **Observed N-S tilt between recent EUREF AC weekly combinations (or EUREF campaigns) and the EPN cummulative solution combination**
- GOP repro-1 provides a 'homogenous' weekly results to look into history
- Compared CRD on weekly basis:
 - 1a-set EPNC_1300 (CRD+VEL)
 - 1b-set EPNC_1600 (CRD+VEL)
 - 1b-set ITRF2005 (CRD+VEL)
 - 1c-set ITRF2008 (CRD+VEL)
 - 2a-set EUREF AC (weekly CRD)
 - 2b-set GOP repro1 (weekly CRD)
- **Helmert transformations:**
 - NEU / XYZ (on weekly basis)
 - 3-TRA / 3-TRA + 3-ROT + 1-SCL
- **Datum definition assessed by:**
 - All common stations set as fiducial
 - Iteratively select the 'consistent' set
 - Solution numbers per sites applied



Helmert parameters (XYZ)



Helmert parameters (XYZ)



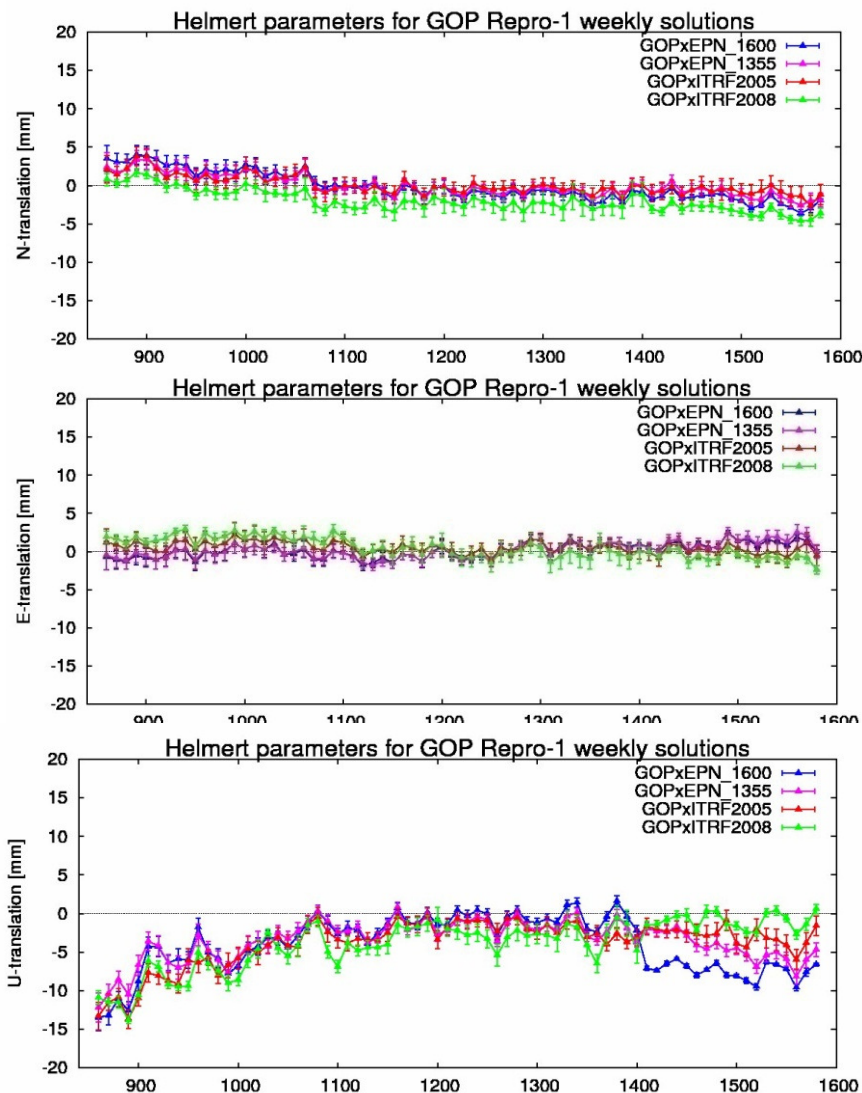
Helmert parameters (NEU)

GOP-repro1

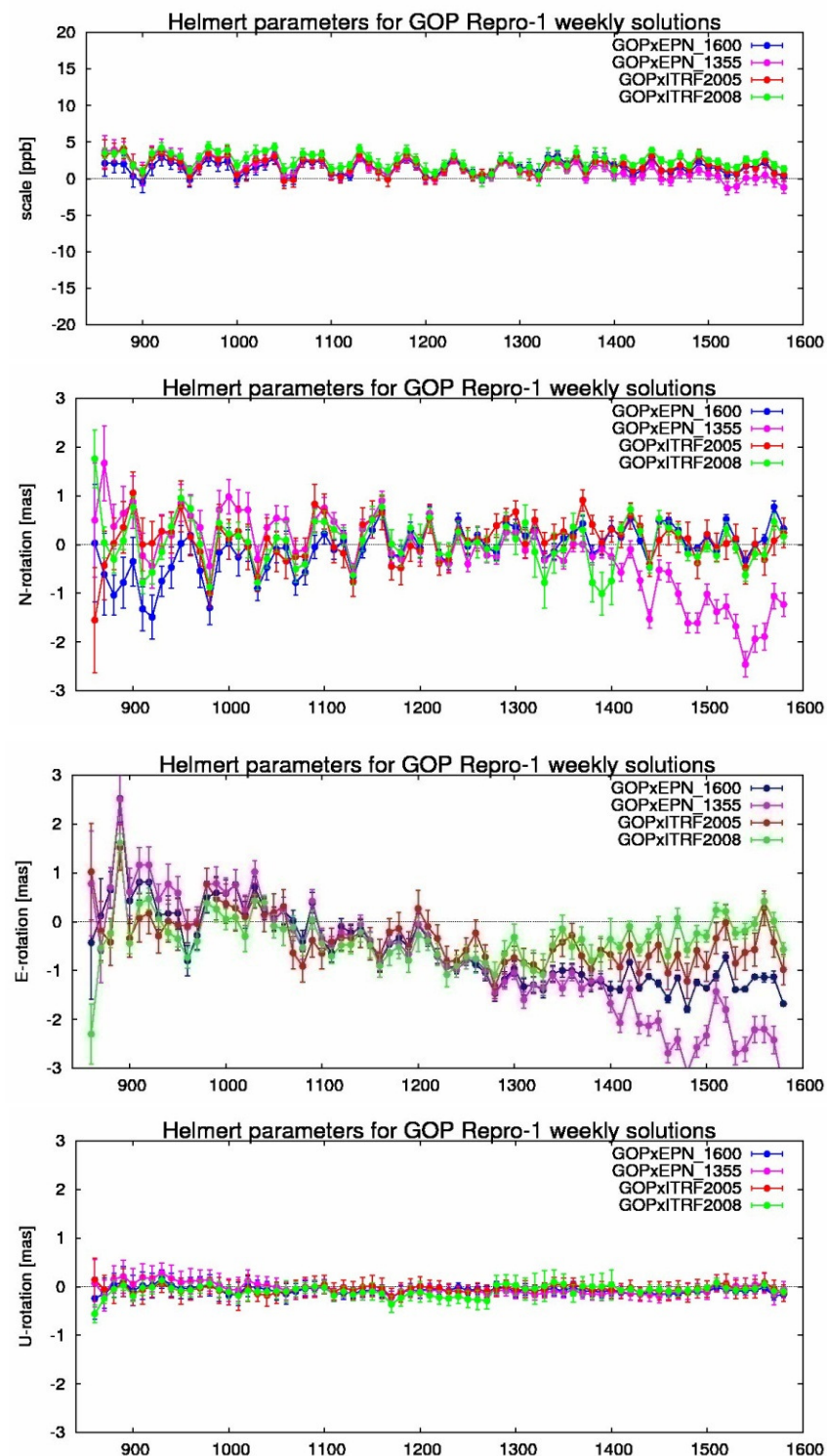
X

EPN_1600, EPN_1355, ITRF2005, ITRF2008

N, E, U - translations

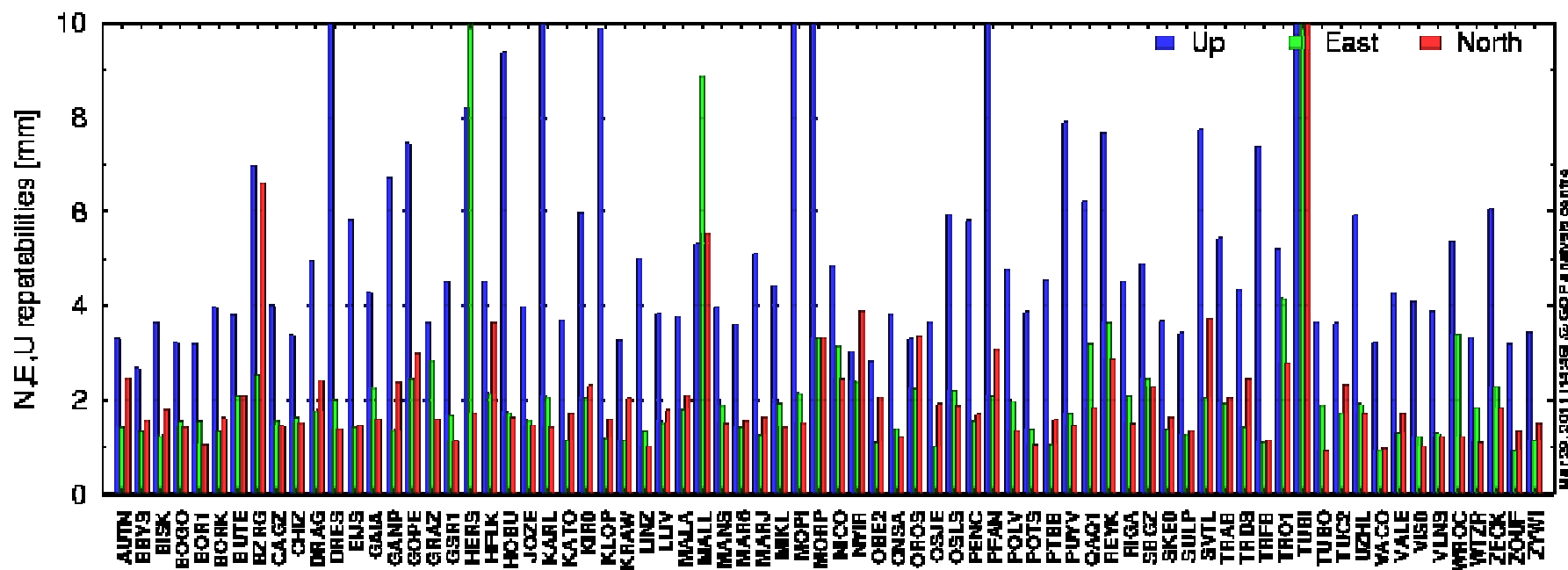


N, E, U, rotations + scale



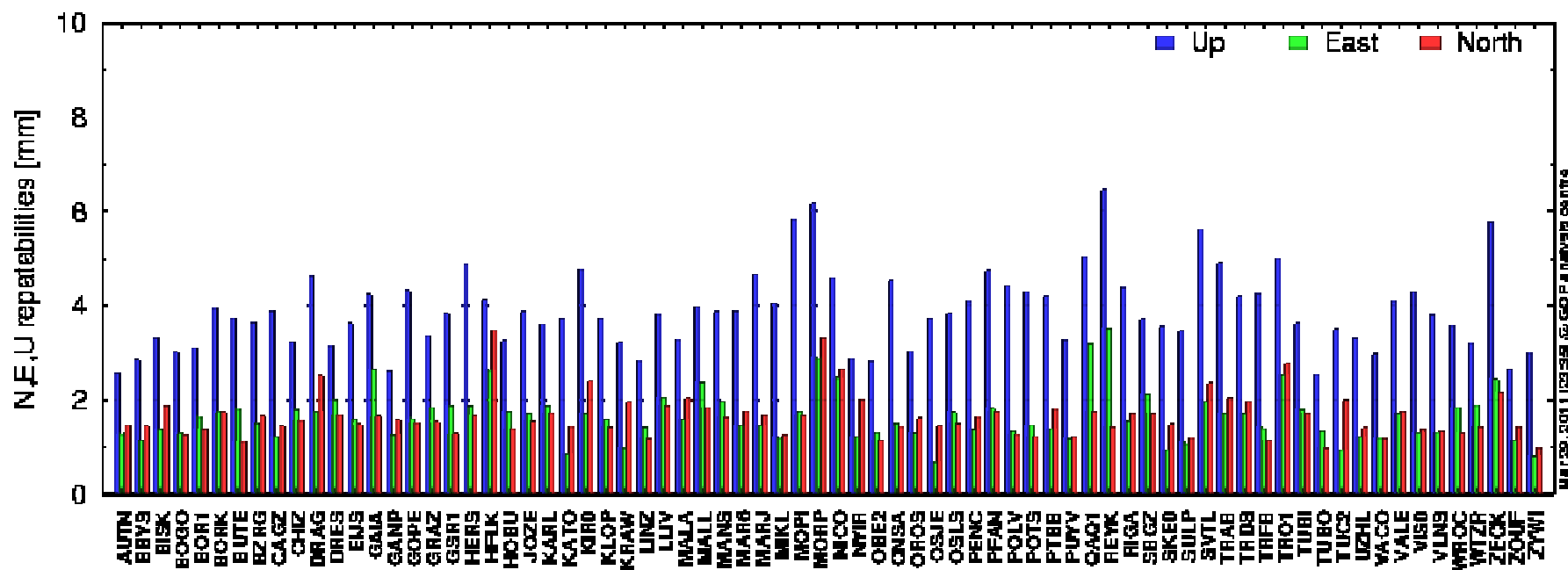
Long-term combination

- Combination based on weekly solutions
- Setup coordinate/velocity intervals iteratively, but started without any discontinuities
- NNT MC for 17 fiducial stations [w.r.t. ITRF2005/ITRF2008]
- Initially used all fiducial stations, in case of discontinuities we kept only the latest solution numbers as fiducial



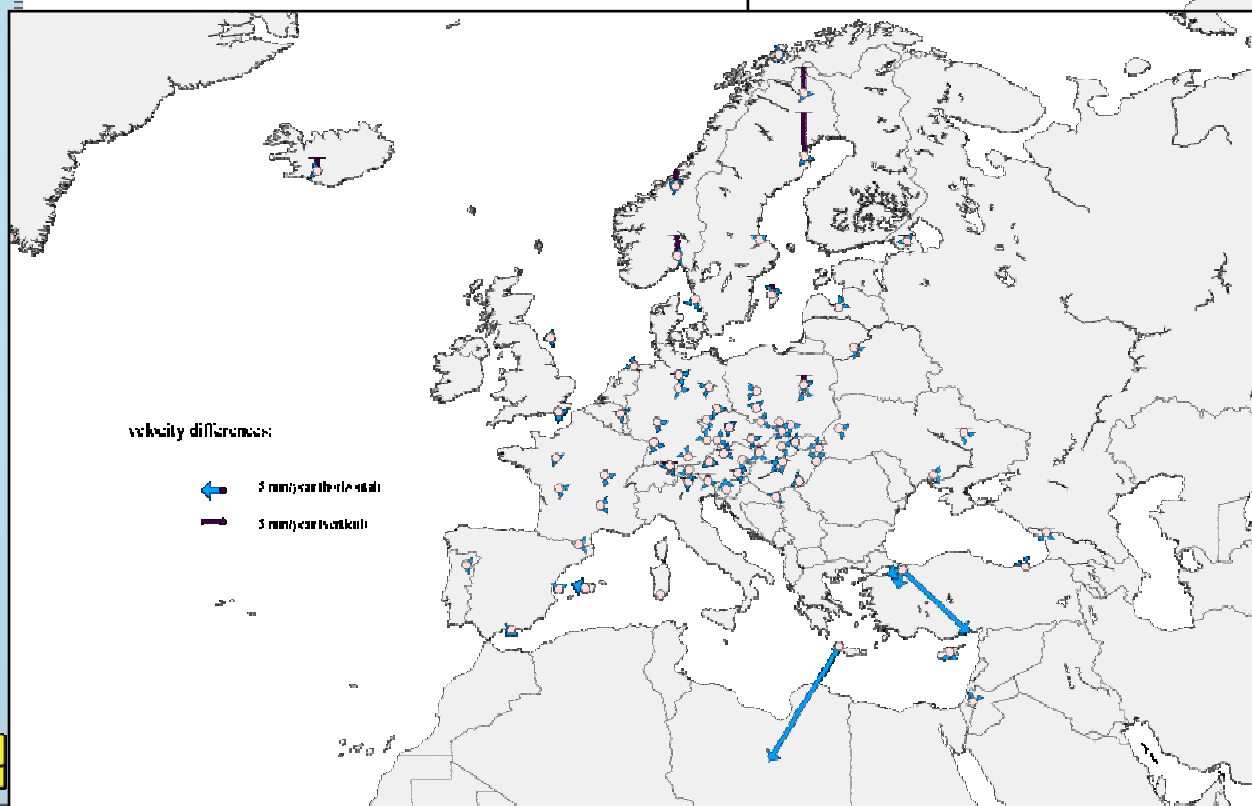
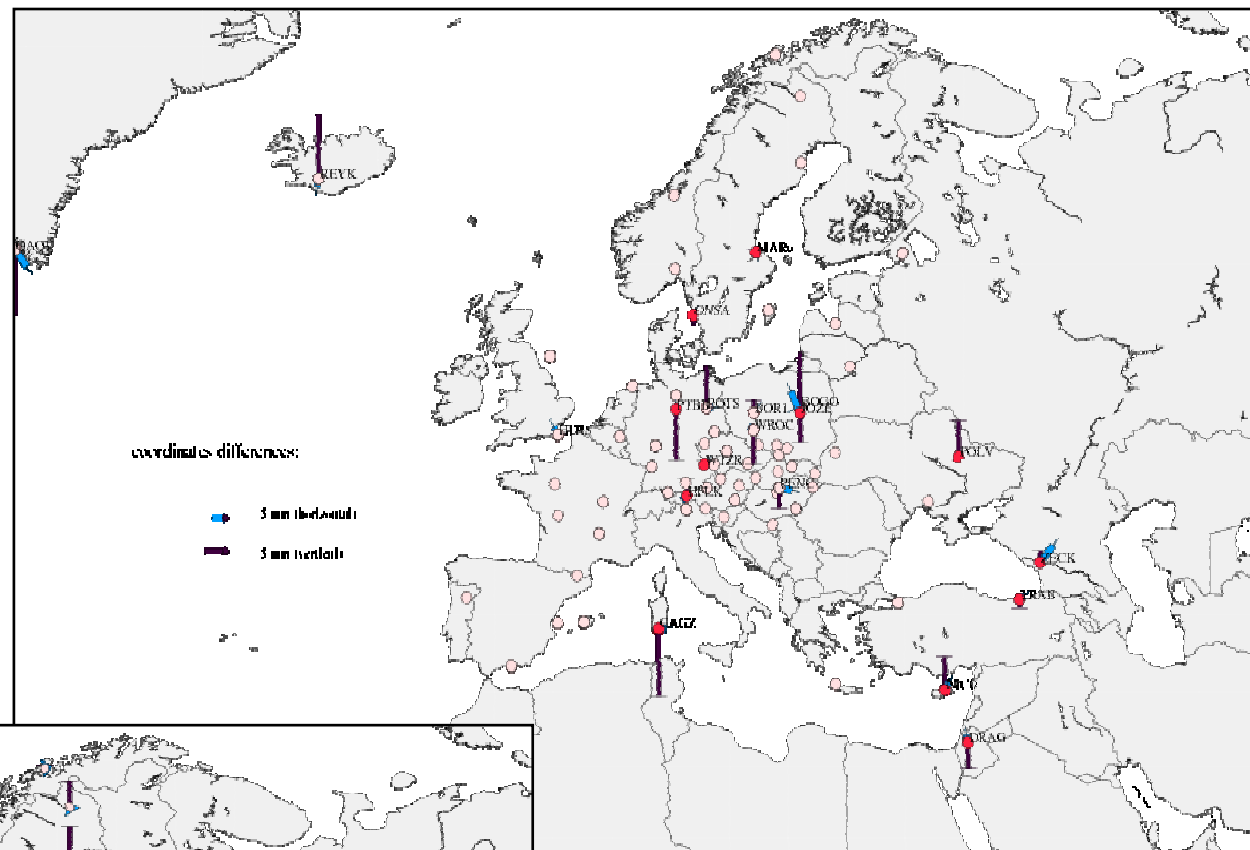
Long-term combination

- Combination based on weekly solutions
- Setup coordinate/velocity intervals iteratively, but started without any discontinuities
- NNT MC for 17 fiducial stations [w.r.t. ITRF2005/ITRF2008]
- Initially used all fiducial stations, in case of discontinuities we kept only the latest solution numbers as fiducial



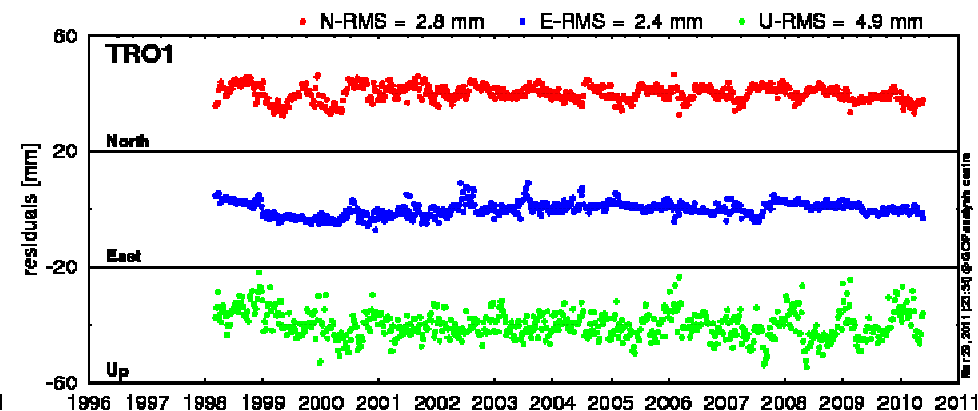
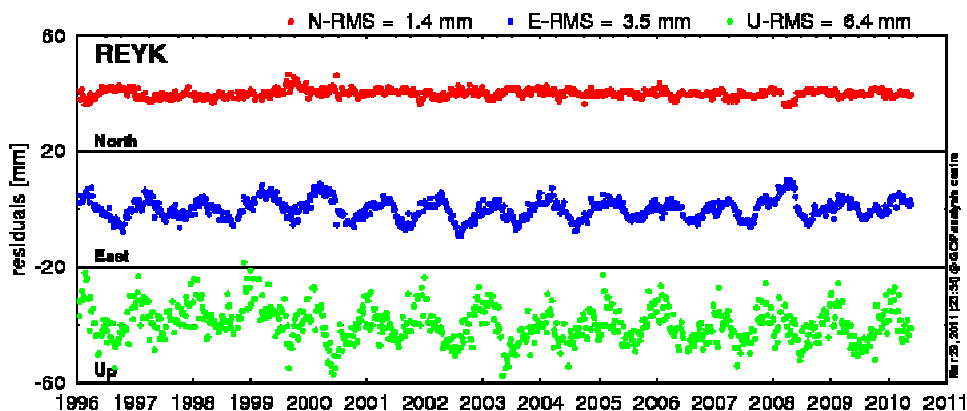
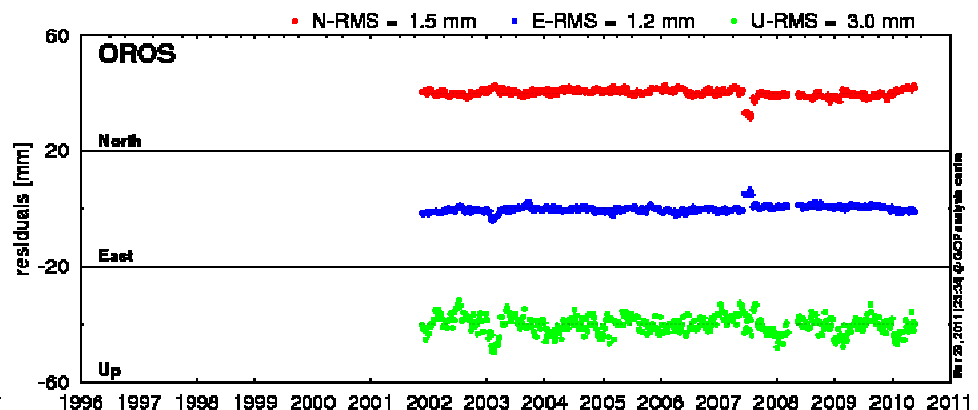
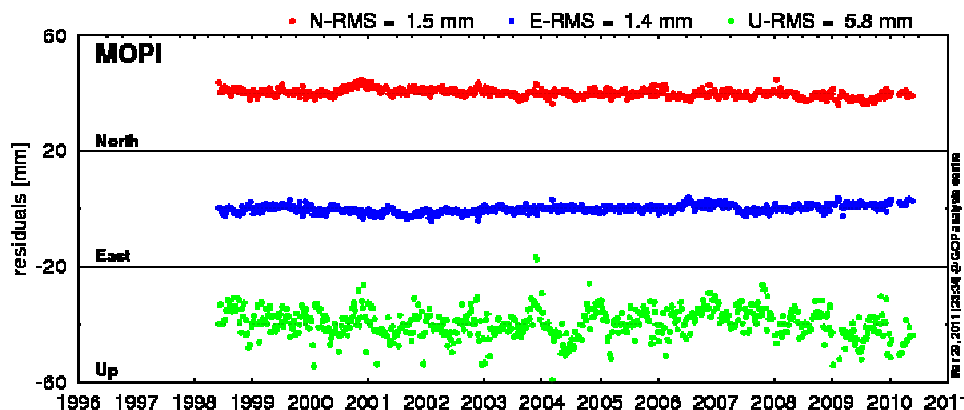
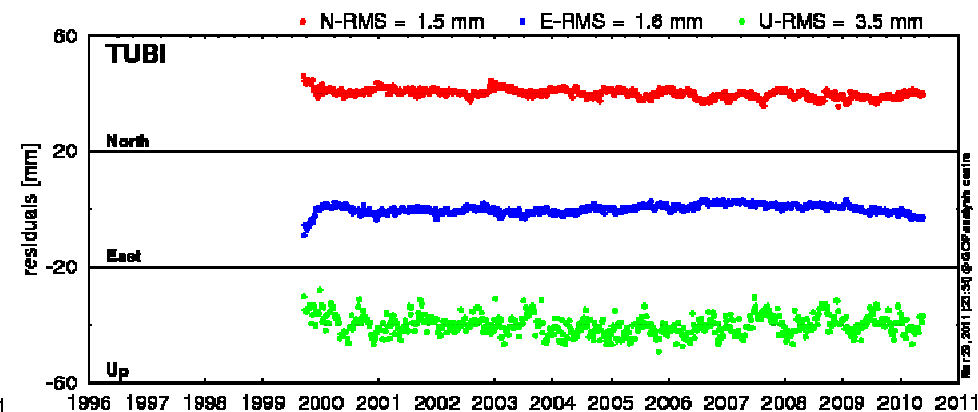
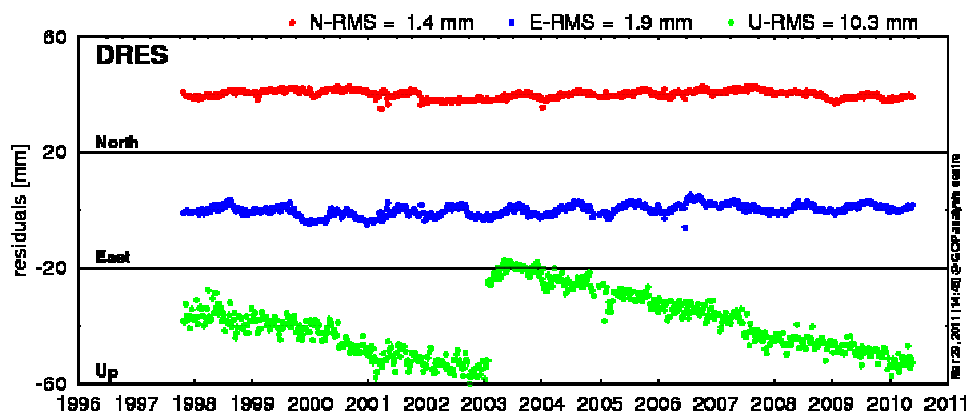
Combination

NEU residuals from the
Helmert transformation
3 translations [mm] ->
17 fiducial stations

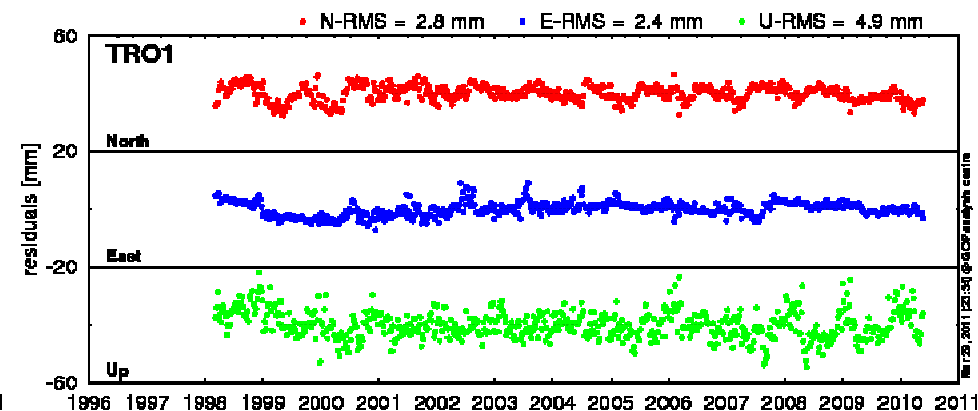
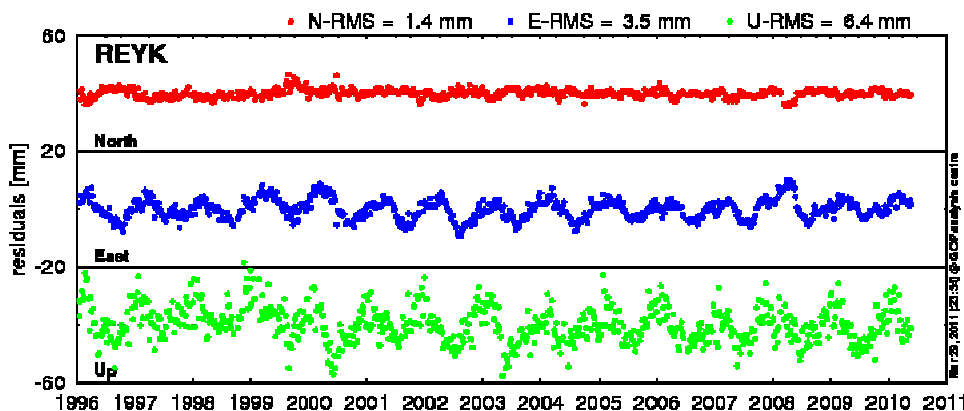
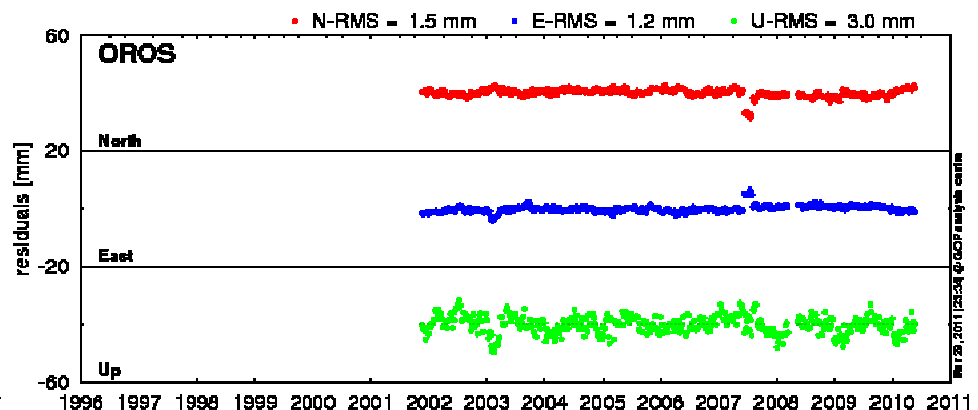
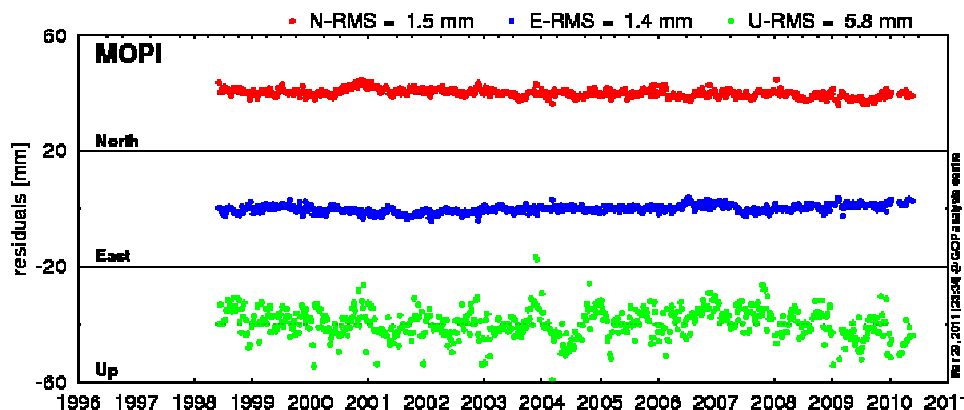
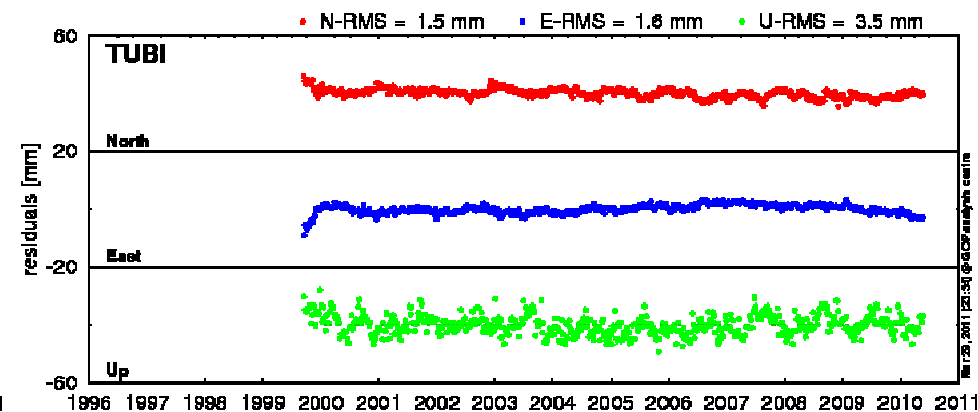
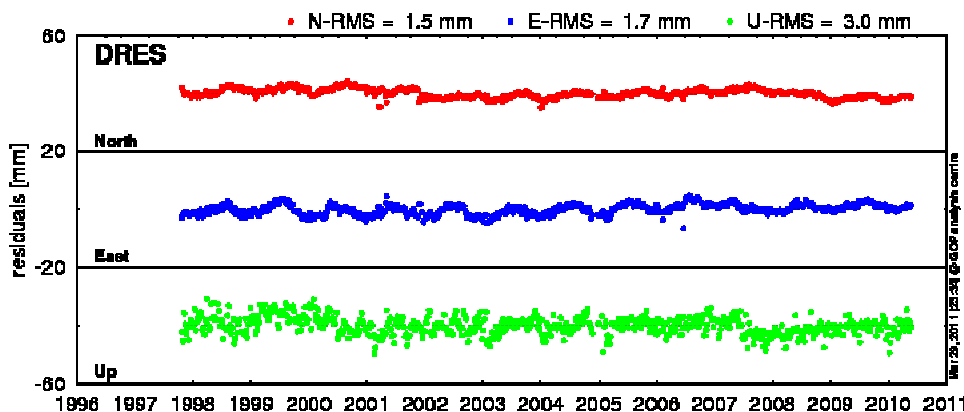


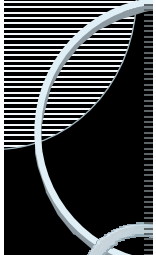
<- estimated horizontal
and vertical velocities
w.r.t. ITRF2005
[mm/year]

CRD time-series – before/after



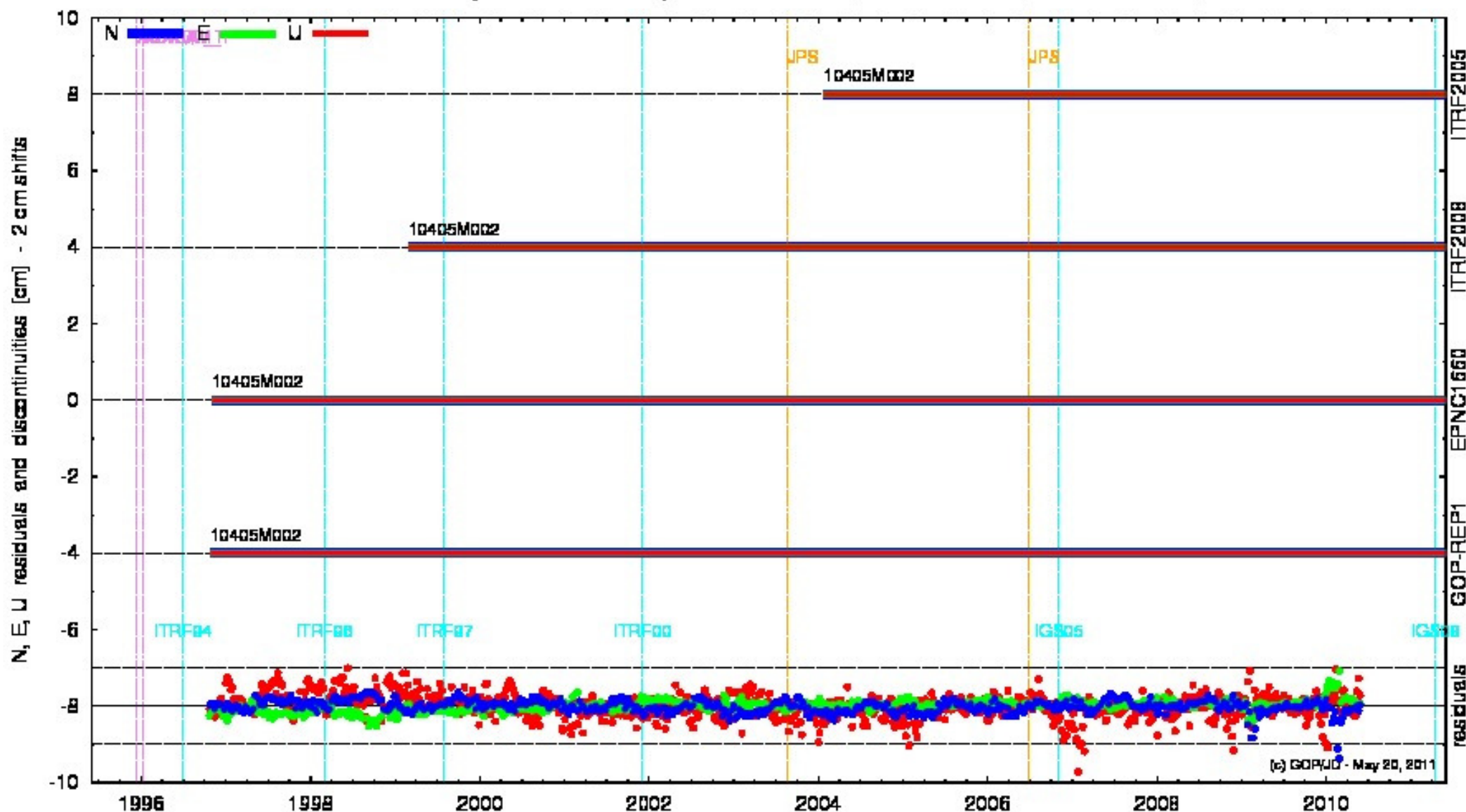
CRD time-series – before/after





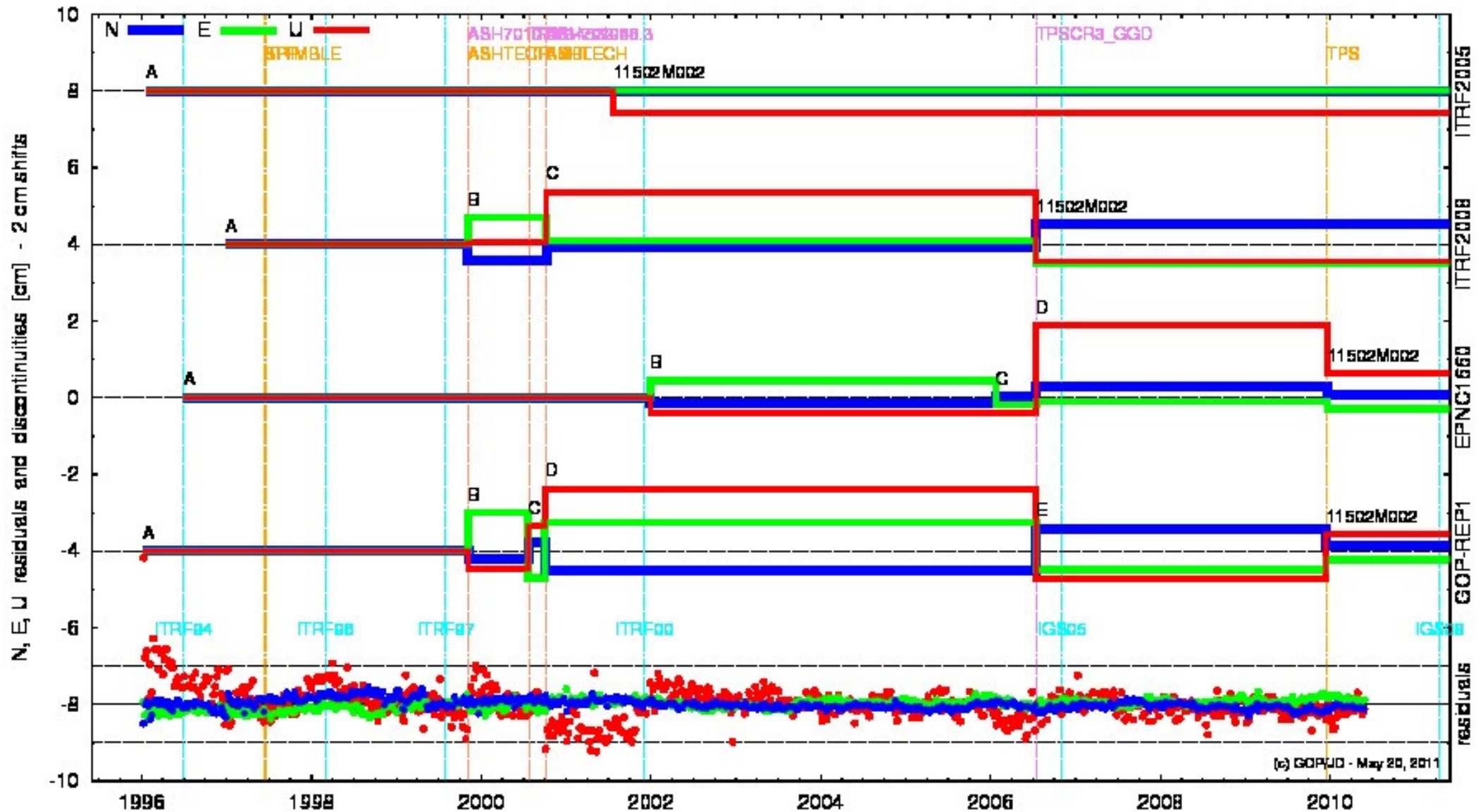
Discontinuity plots

MAR6 discontinuities (and residuals) - ITRF2005, ITRF2008, EPNC1600, GOP-REP1



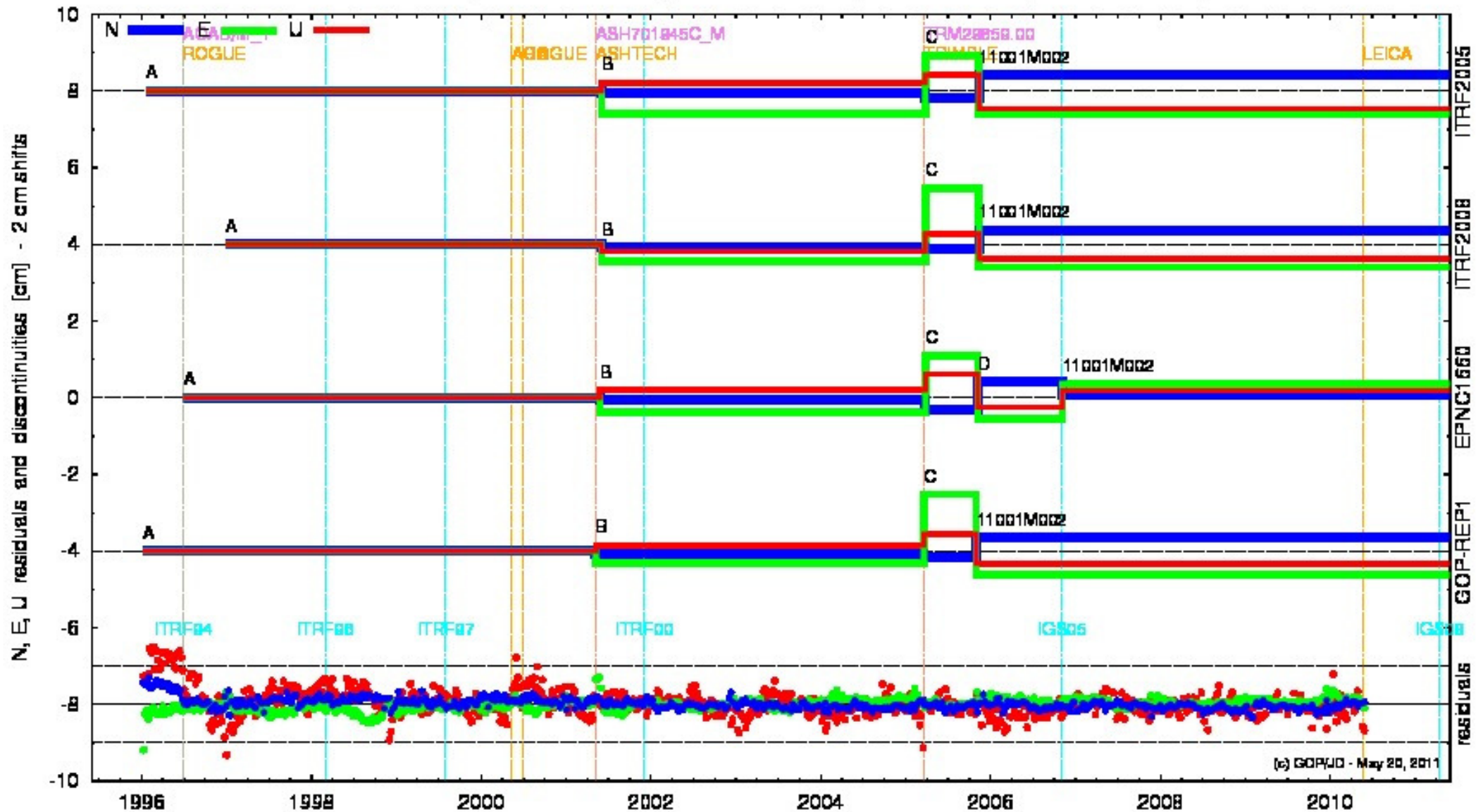


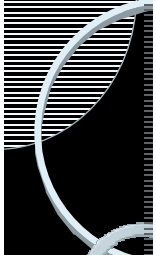
GOPE discontinuities (and residuals) - ITRF2005, ITRF2008, EPNC1600, GOP-REP1



Discontinuity plots

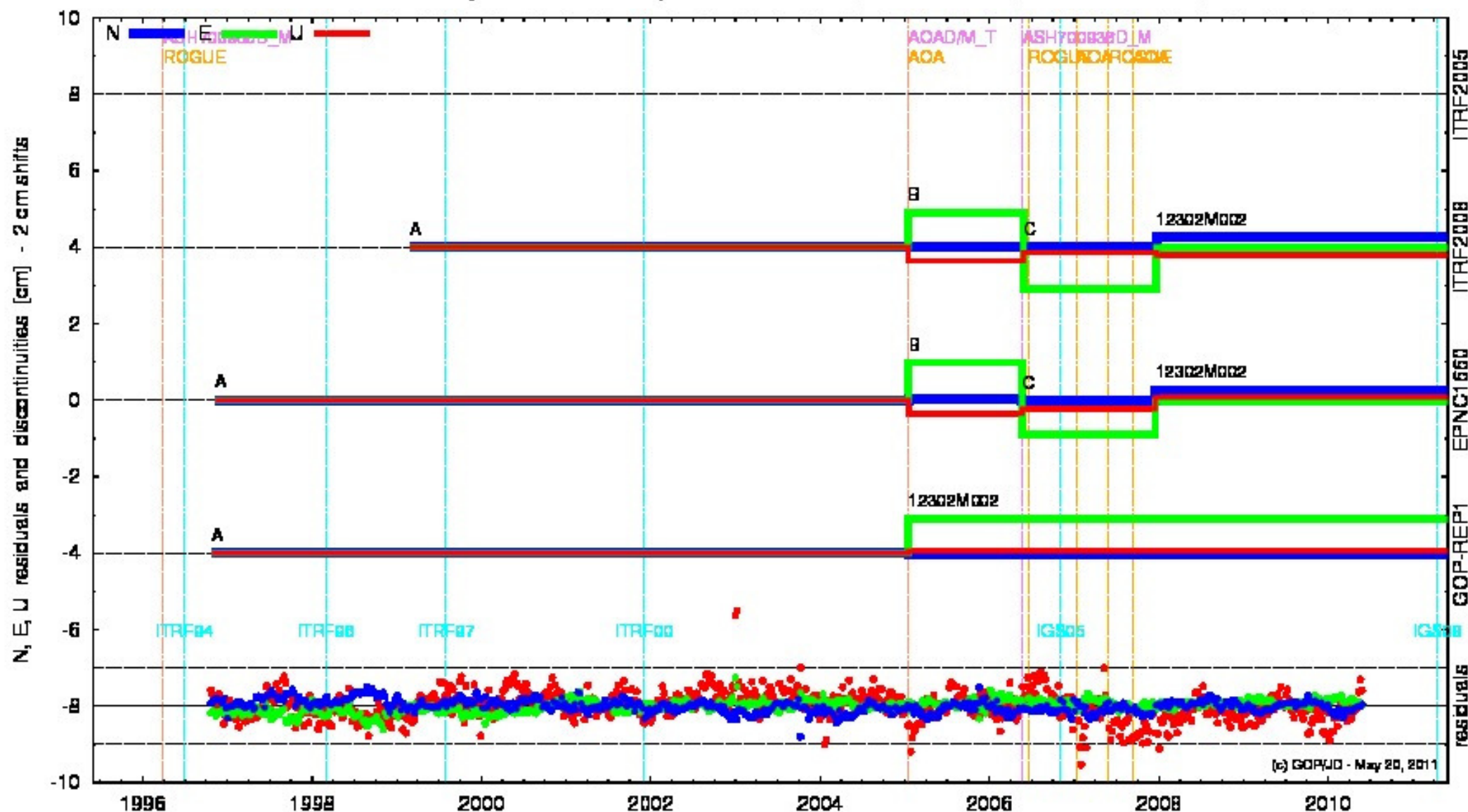
GRAZ discontinuities (and residuals) - ITRF2005, ITRF2008, EPNC1600, GOP-REP1

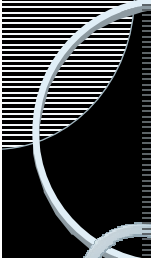




Discontinuity plot

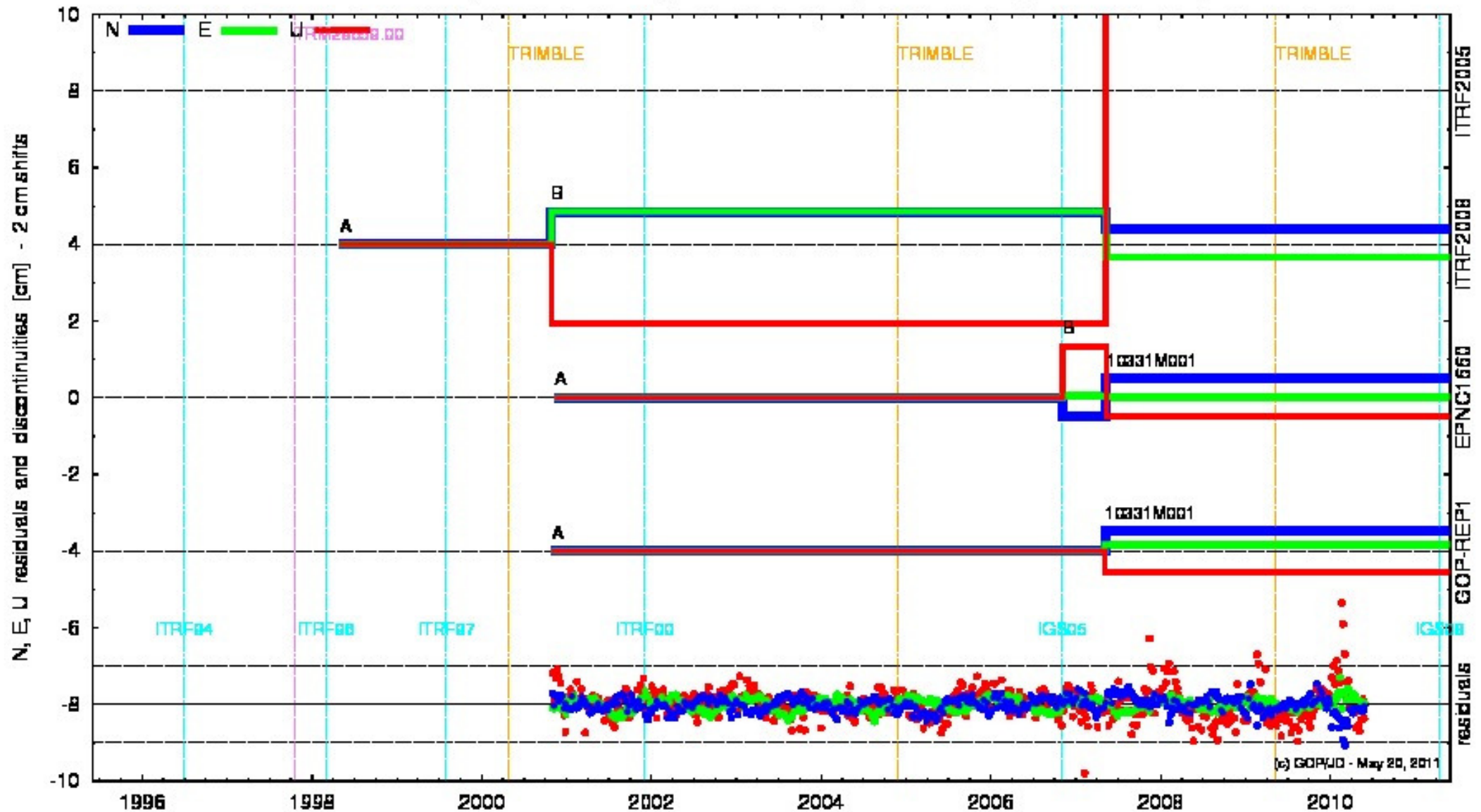
RIGA discontinuities (and residuals) - ITRF2005, ITRF2008, EPNC1600, GOP-REP1

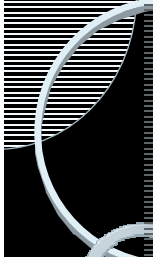




Discontinuity plot – ITRF2008 ?

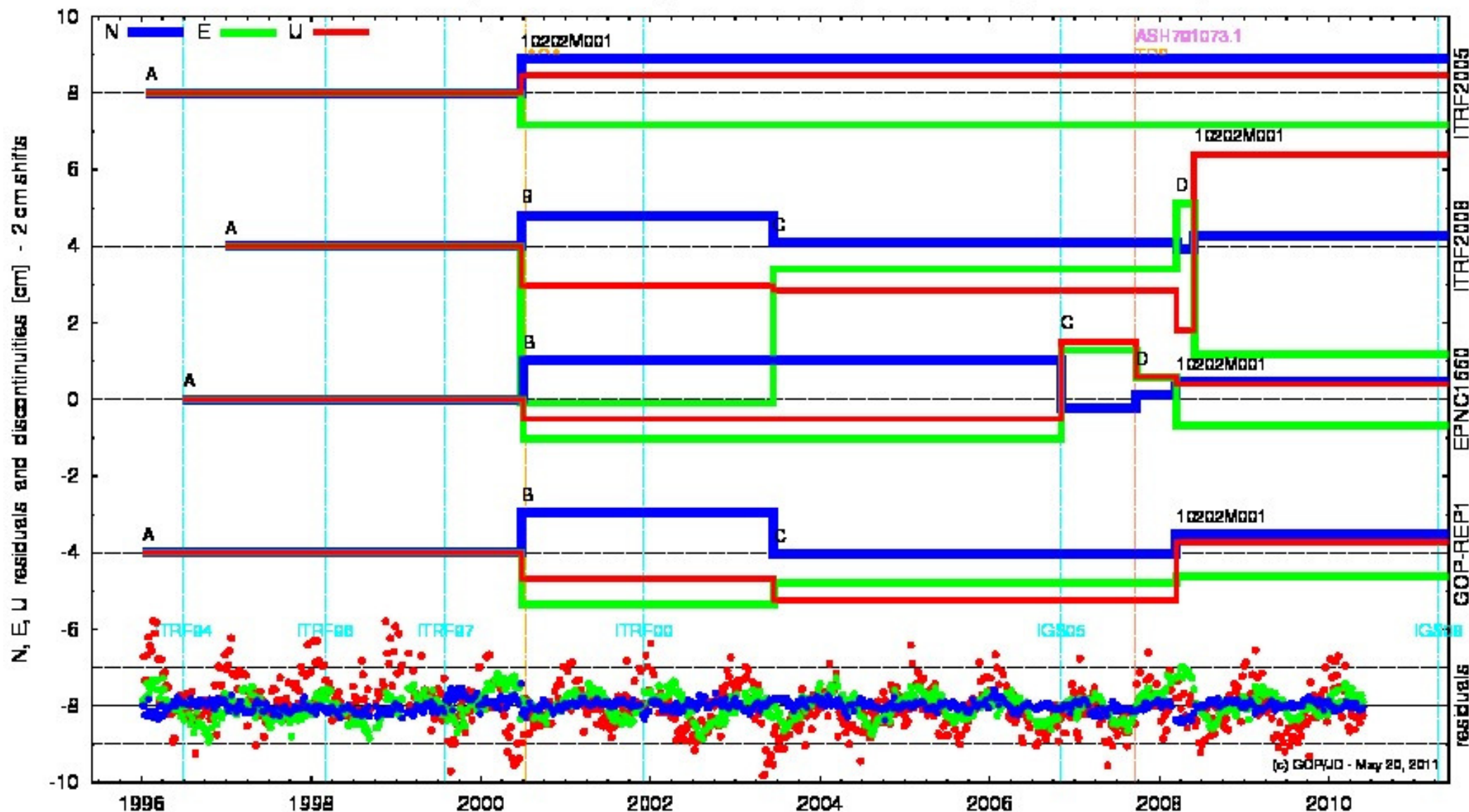
TRDS discontinuities (and residuals) - ITRF2005, ITRF2008, EPNC1600, GOP-REP1



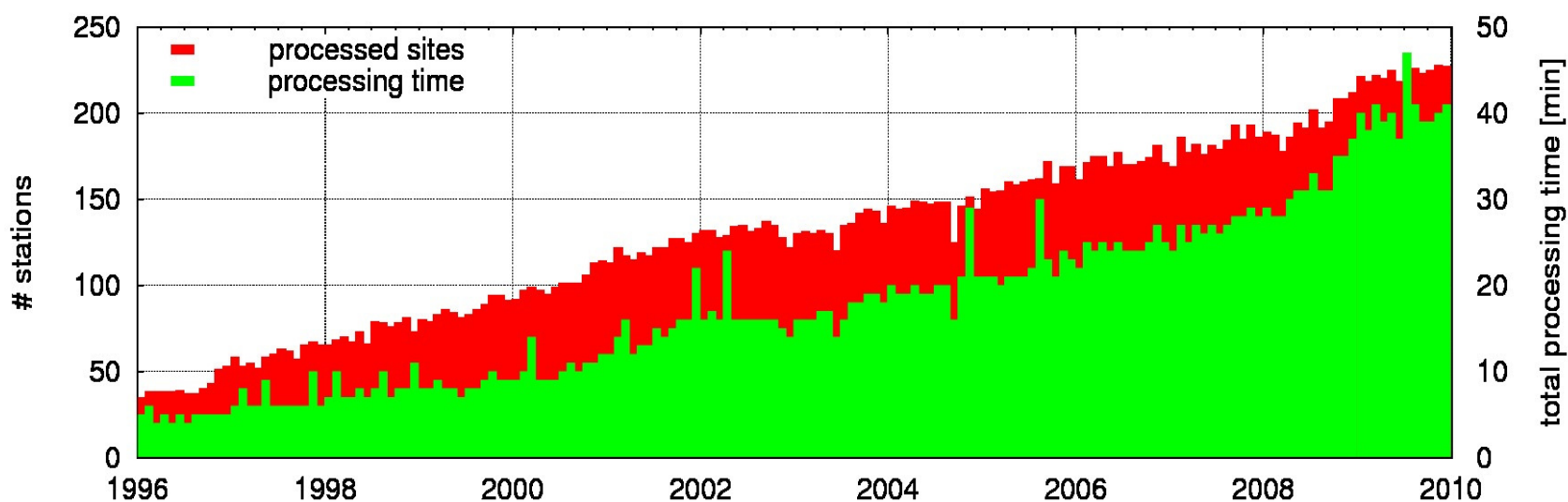
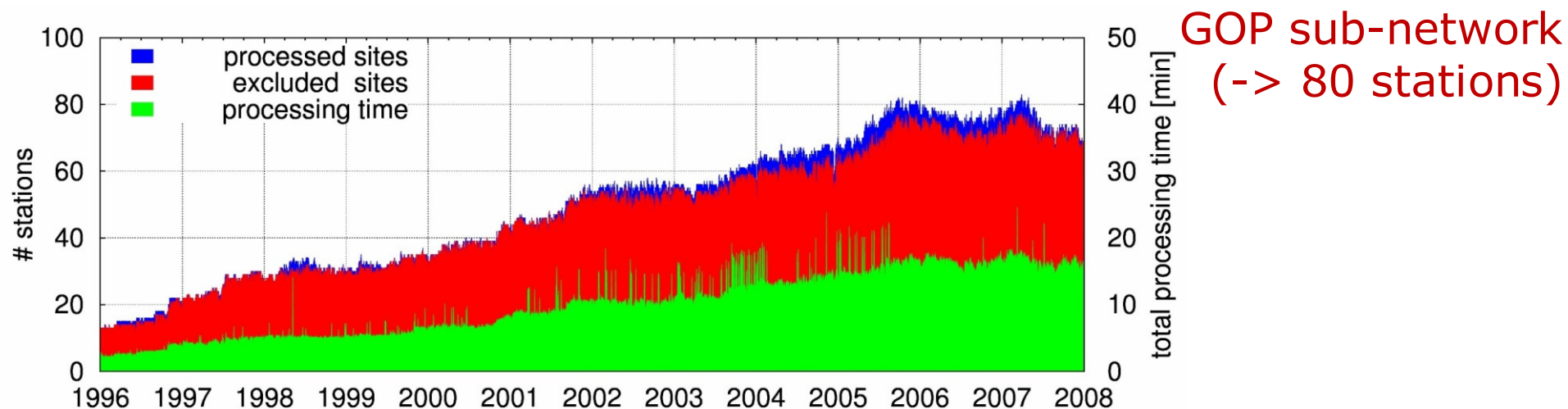


Discontinuity plot – ITRF2008 ?

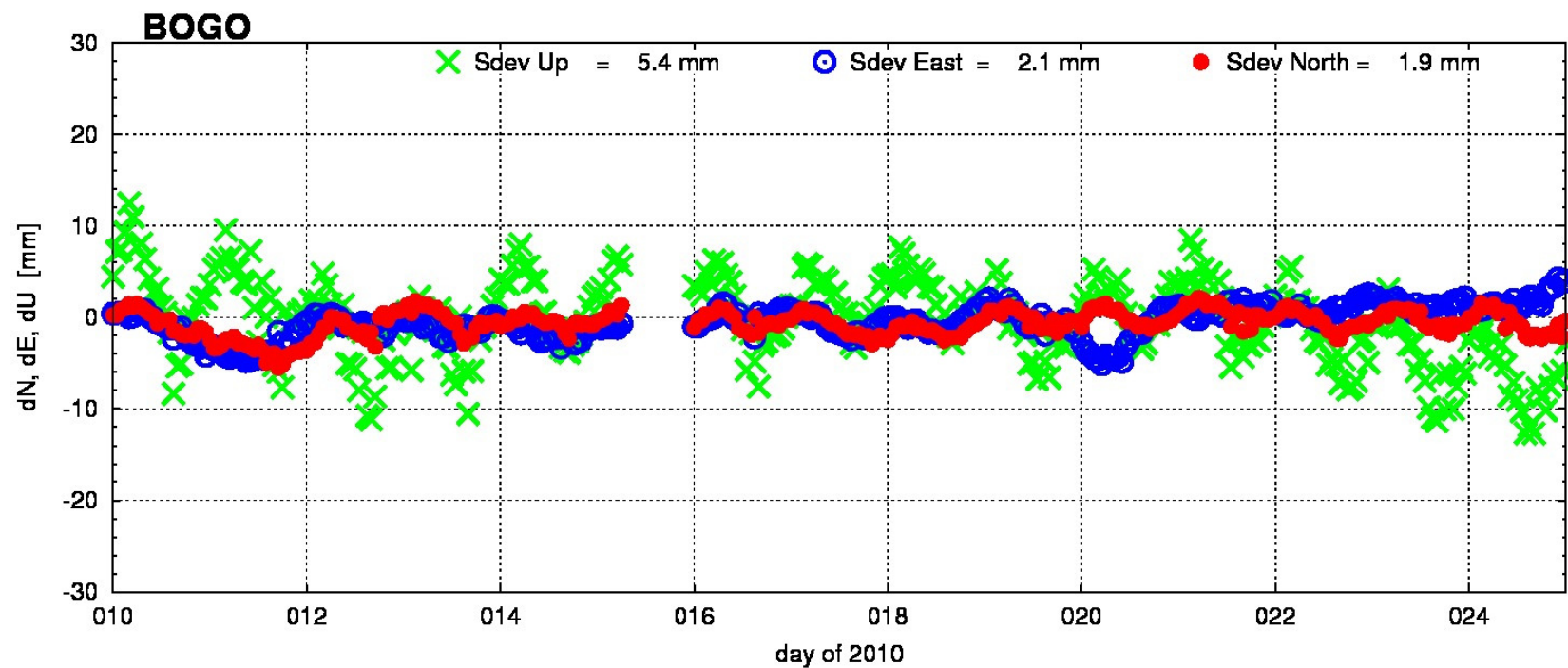
REYK discontinuities (and residuals) - ITRF2005, ITRF2008, EPNC1600, GOP-REP1



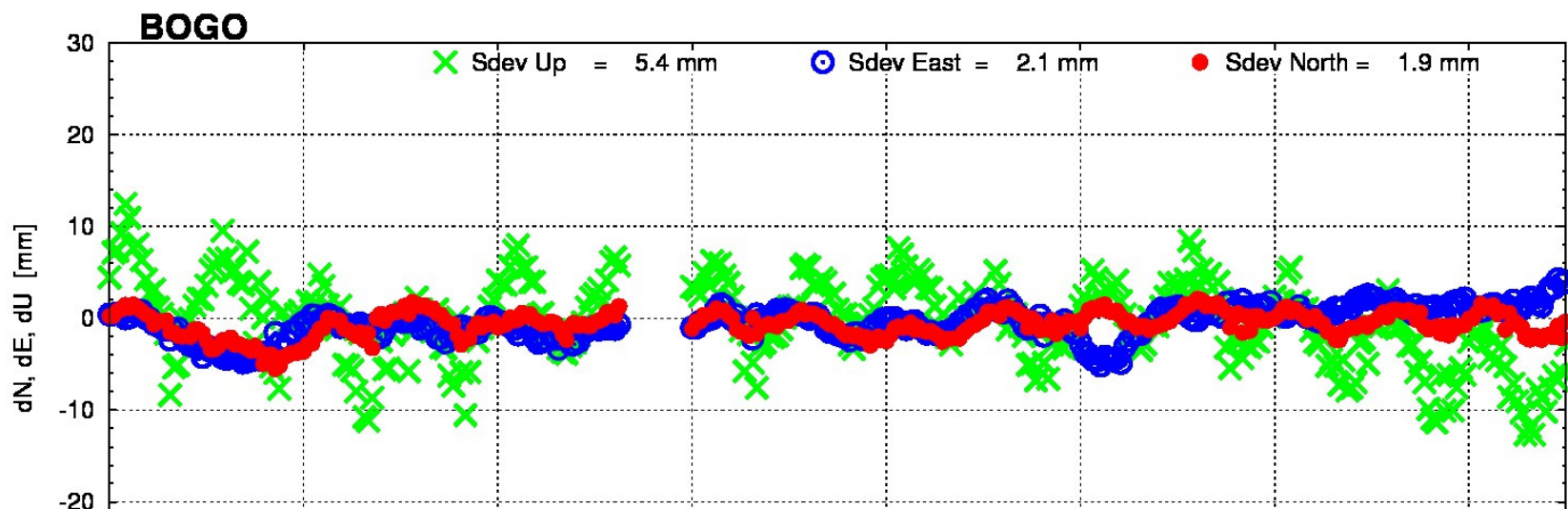
Number of stations x CPU



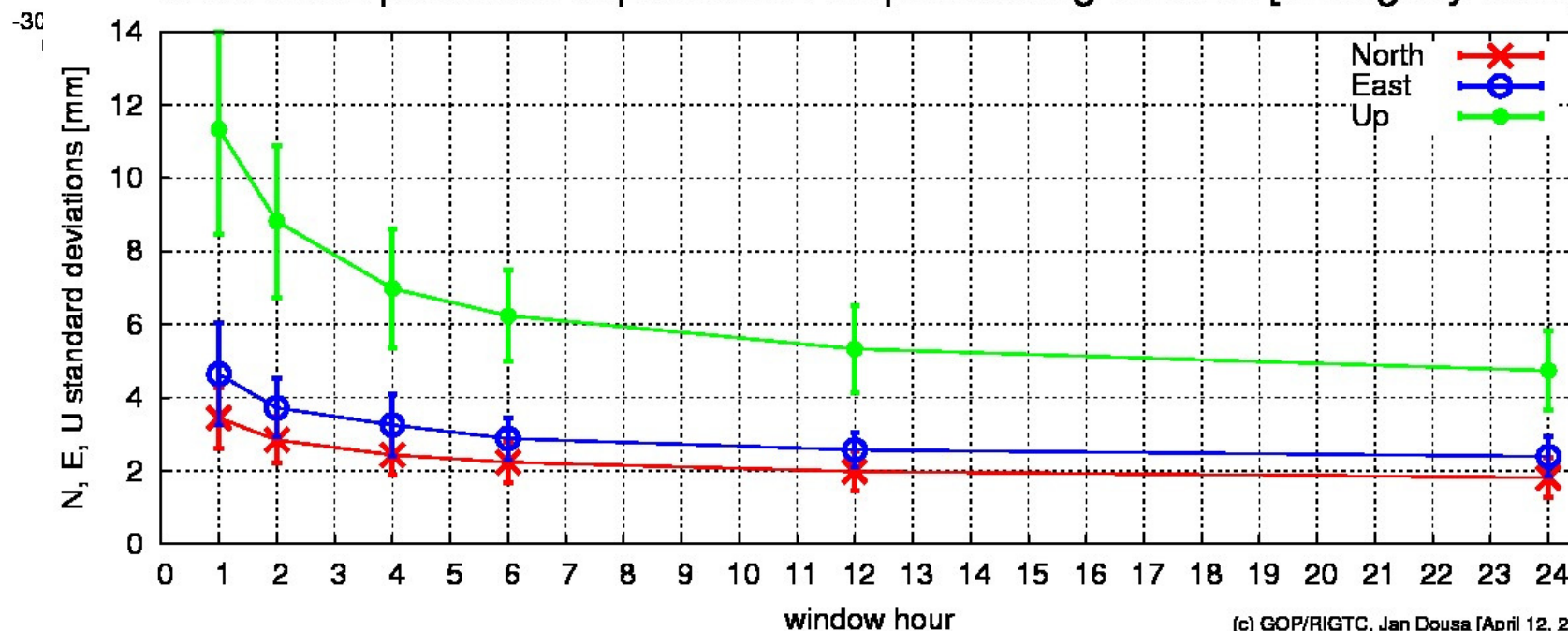
Testing sub-daily solutions



Testing sub-daily solutions



Coordinate precision dependence on processing window [ambiguity fixed]



(c) GOP/RIGTC, Jan Dousa [April 12, 2011]

Summary

- **GOP EPN repro-1 solution developed and data processed**
- **benchmark dataset processed and uploaded in time**
- **weekly SNX+SUM and daily SNX+TRO uploaded in time to BKG**
- **capability of processing a full network tested**
- **raw weekly time-series of GOP repro-1 used for the assessment of the EPN cumulative solution reference datum definition**
- **a long-term combination provided (coord+vel)**
- **discontinuities plotted, compared to logged events and to ITRF2005, ITRF2008 and EPN cumulative discontinuities**