

Recent Activities of the WUT EPN Local Analysis Centre

Tomasz Liwosz, Michal Kruczyk, Jerzy Rogowski

Department of Geodesy and Geodetic Astronomy
Warsaw University of Technology

tomasz.liwosz@gik.pw.edu.pl

EUREF Symposium 2010
02–05 June, Gävle
Sweden



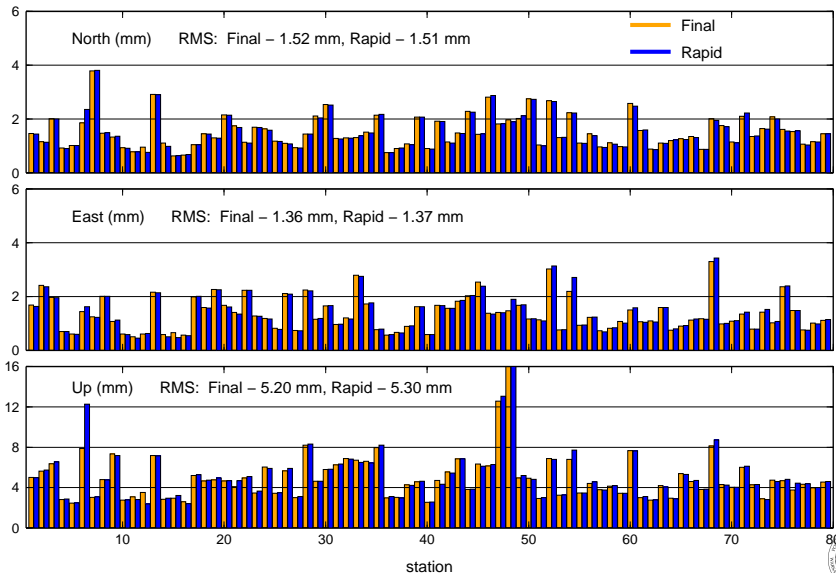
Rapid Product

Since January 2010, WUT's final (weekly and daily) contribution to EPN has been extended to Rapid product:

- based on IGS Rapid orbits,
- processing strategy the same as in case of final daily solution,
- processing performed every day, fully automated

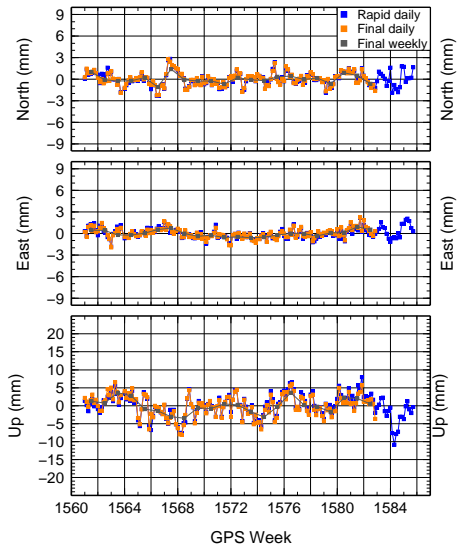


RMS: Final vs. Rapid (GPS weeks: 1561–1581)

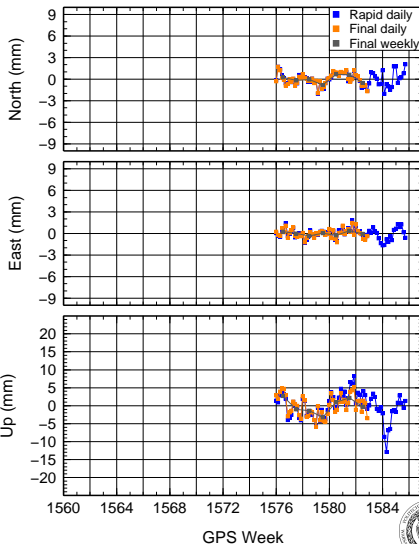


Coordinate time series – Cracow

KRAW 12218M001



KRA1 12218M002



EPN Re-processing Project

Purpose

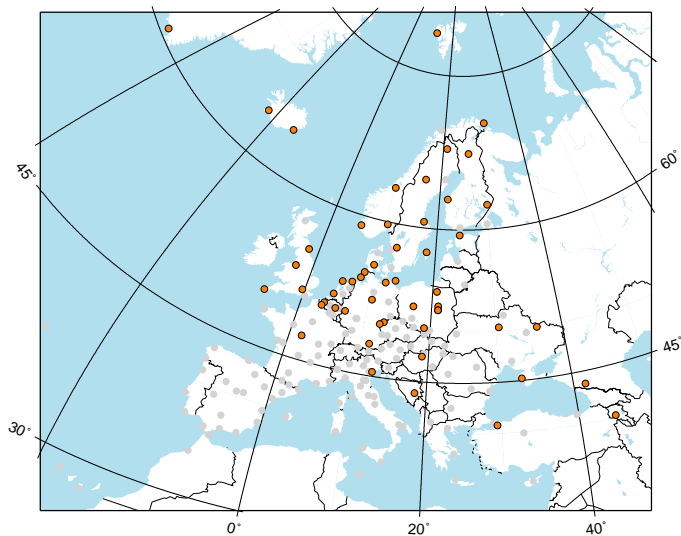
Reanalyse all GNSS data since 1996 in a fully consistent way, using latest models and developments in processing strategy

WUT's contribution

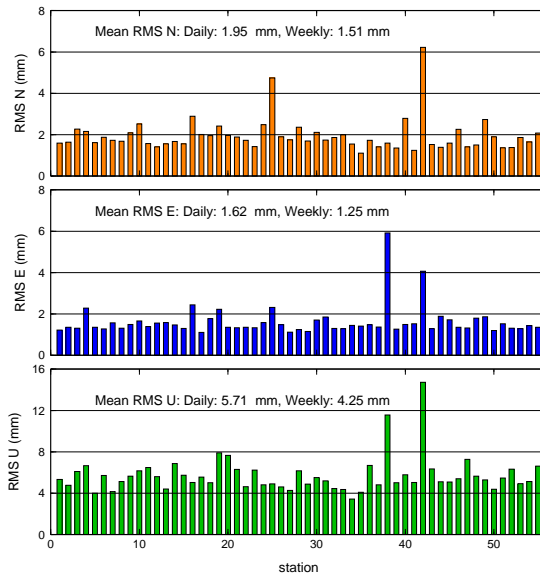
In 2010, WUT joined EPN Reprocessing Project. In a pilot phase we have analyzed data of 55 sites for the year 2006



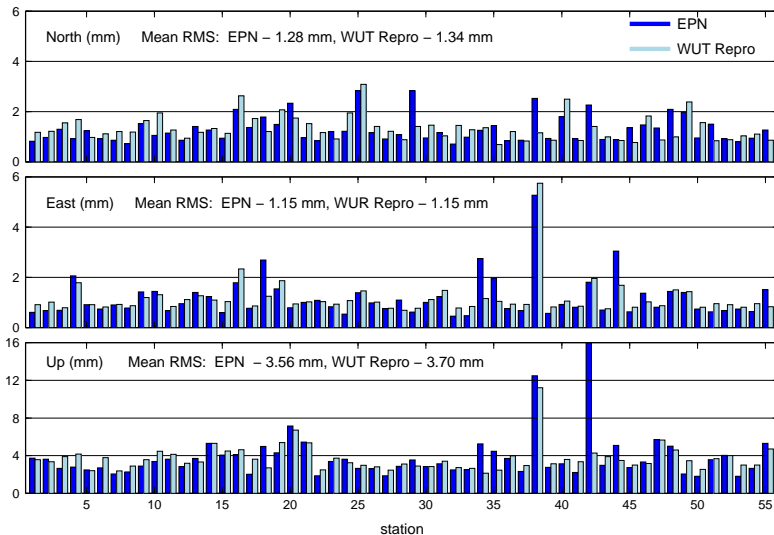
WUT's reprocessing sub-network



RMS: WUT EPN Re-processing (daily)



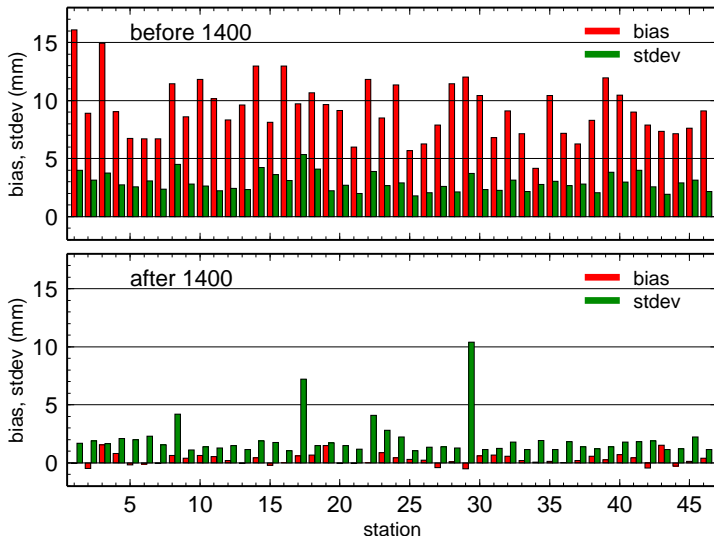
RMS: WUT rep. vs. EPN (weekly, GPS weeks: 1356–1399)



Smaller RMS: KELY, NYA1, QAQ1, REYK, and THU3



ZTD: RMS and bias wrt. EPN



Thank you for your attention!

