

Welcome to Lantmäteriet!

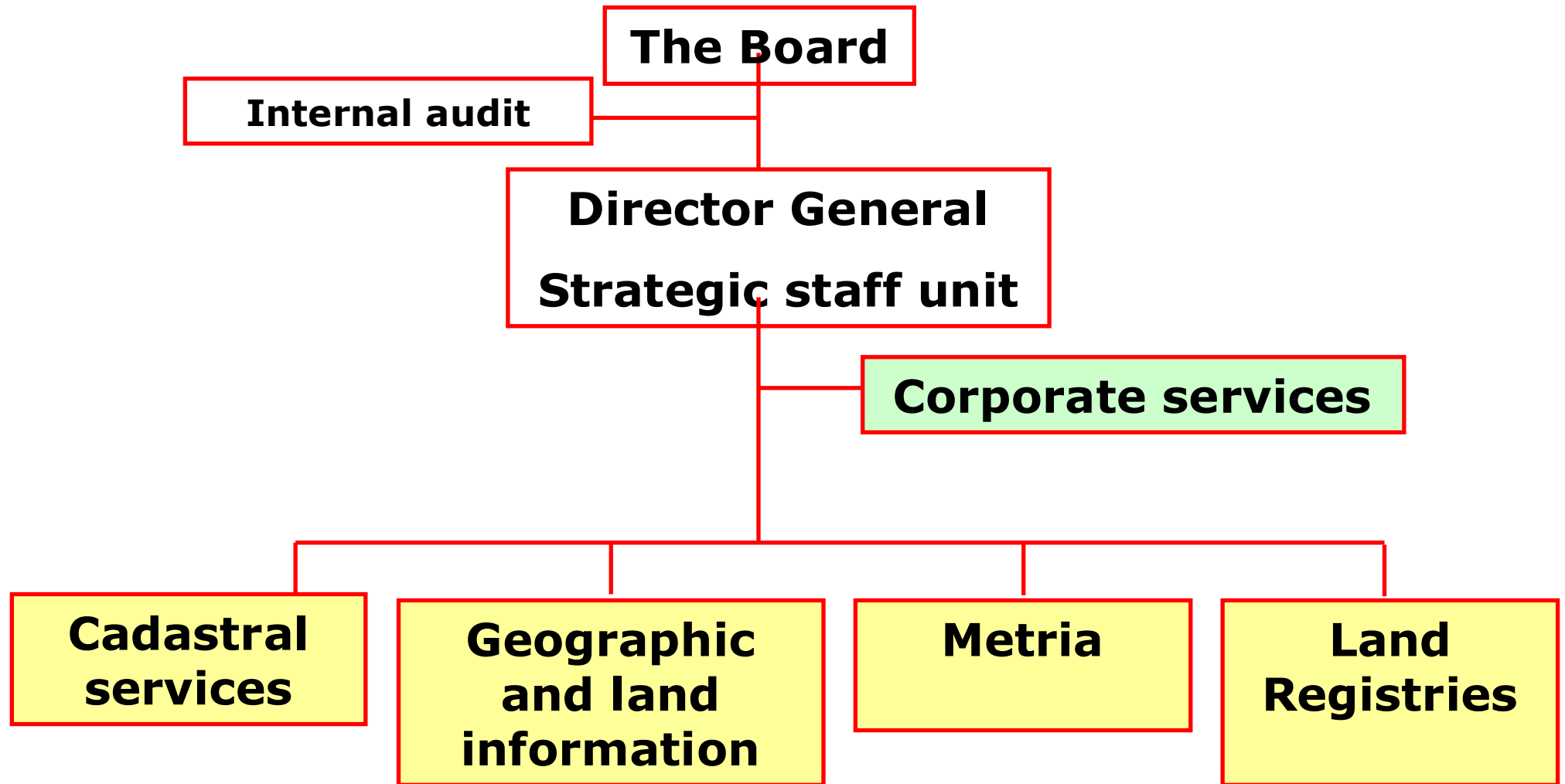


Stig Jönsson, Director General Lantmäteriet

380 years of experience

Lantmäteriet has been mapping
Sweden since 1628.





Human Resources



Total staff 2411 persons

1 254 women – 52%

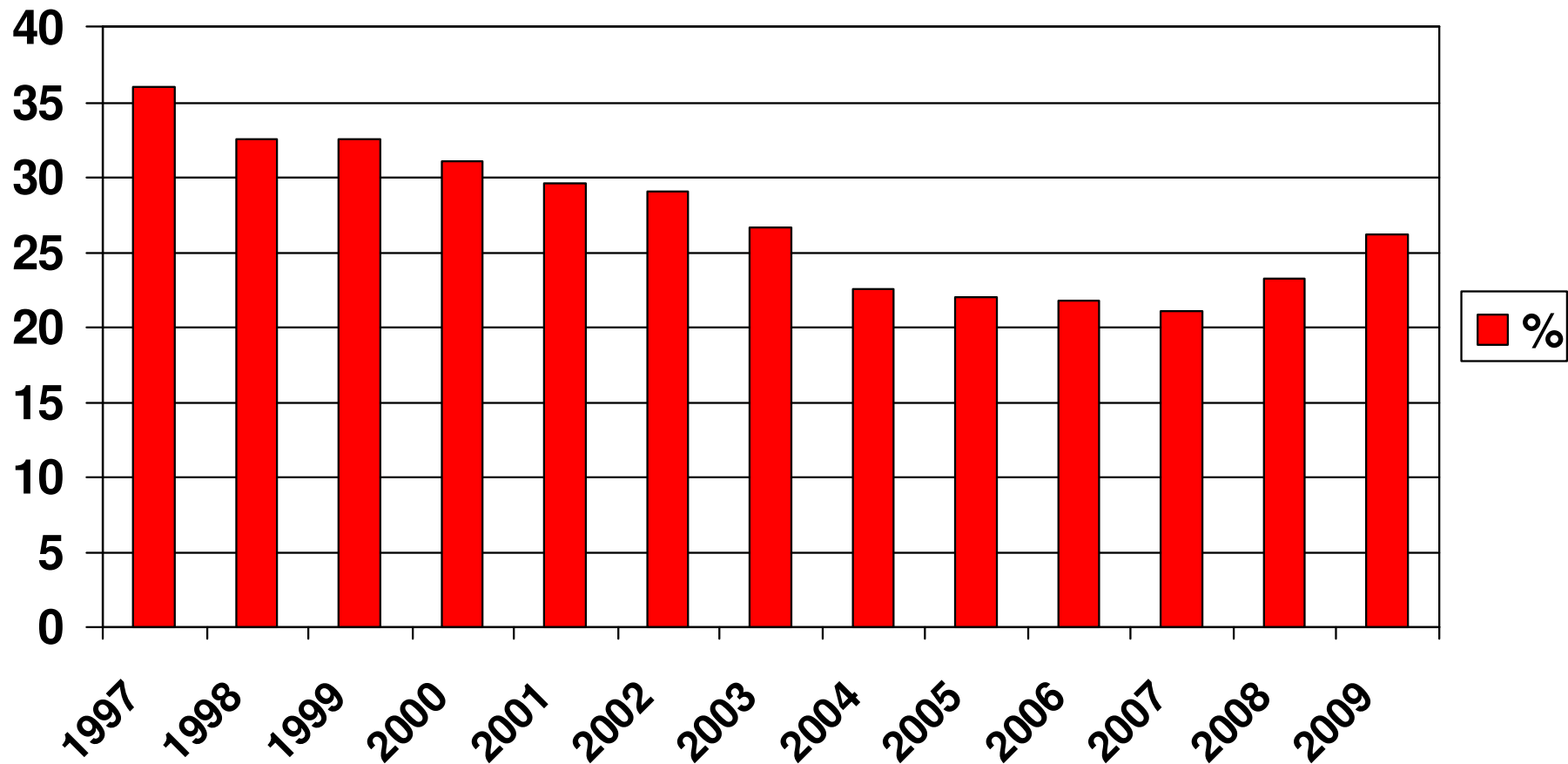
1 157 men – 48%

LANTMÄTERIET



Increasing cost recovery rate

The Grants share of our total Revenues



LANTMÄTERIET

Co-ordination SDI

Lantmäteriet is the national co-ordinator for production, co-operation and development concerning basic Geographic Information and Land Information in Sweden



Inspire



Infrastructure for Spatial
Information in Europe

LANTMÄTERIET

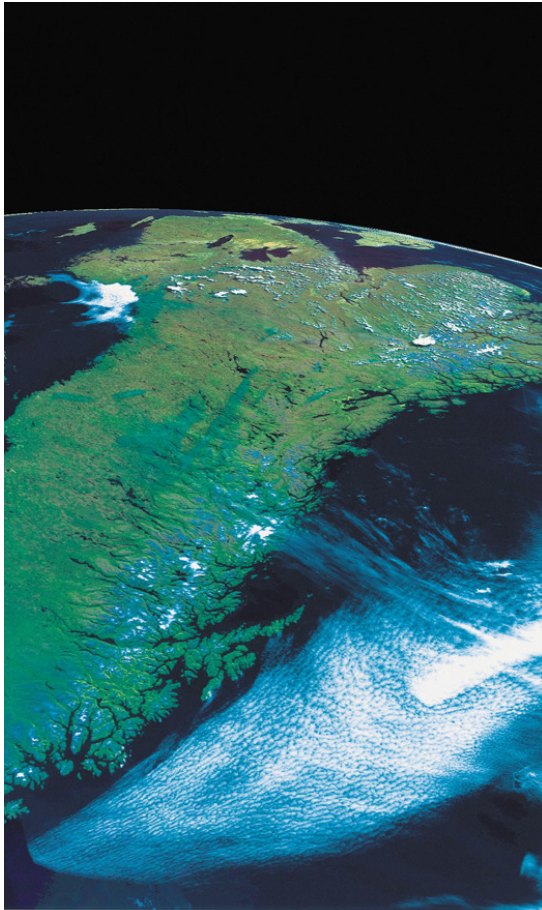


National Geo-data strategy



The Swedish Government has commissioned Lantmäteriet to draw up a first version of a national geo-data strategy for Sweden in close co-operation with the most important stakeholders

Action areas



Geodata project

1. Cooperation in networks
2. Structuring the information
3. Technical infrastructure
4. National metadata catalogue
5. Geodetic reference system
6. Research, development and education
7. Legal framework
8. Financing and pricing

GI-portal

We will develop web-based services supporting the users to:

- search
- find
- look at
- order and download

geographic data that come from different data providers and are stored in different technical systems



SDI and e-government

Geographic Information is the backbone
in e-government...

....70-80% of all public procedures
includes a geographic component

**Lantmäteriet
– in pole
position!**



Strategic goal for Export of Services

Providing know-how and experiences in land
management worldwide for sustainable development,
poverty reduction and economic growth

LANTMÄTERIET



International market



Lantmäteriet is active on the International Market together with Swedesurvey AB. We have projects in about 30 countries



LANTMÄTERIET





Strategic goal for Export of Services

Providing know-how and experiences in land
management worldwide for sustainable development,
poverty reduction and economic growth

Other International Engagements

- EuroGeographics
- EuroSDR
- GMES
- FIG
- Euref



My Real Property

Gävle Axmar 20:12

Allmän fastighetsinformation, Taxeringsinforr
09 Juni

Fastighet

Beteckning

Gävle Axmar 20:12
Nyckel: 210174568

Församling

Hamrånge

Senaste ändringen i

allmänna delen

2007-11-07

Senaste ändringen i

inskrivningsdelen

2005-05-10

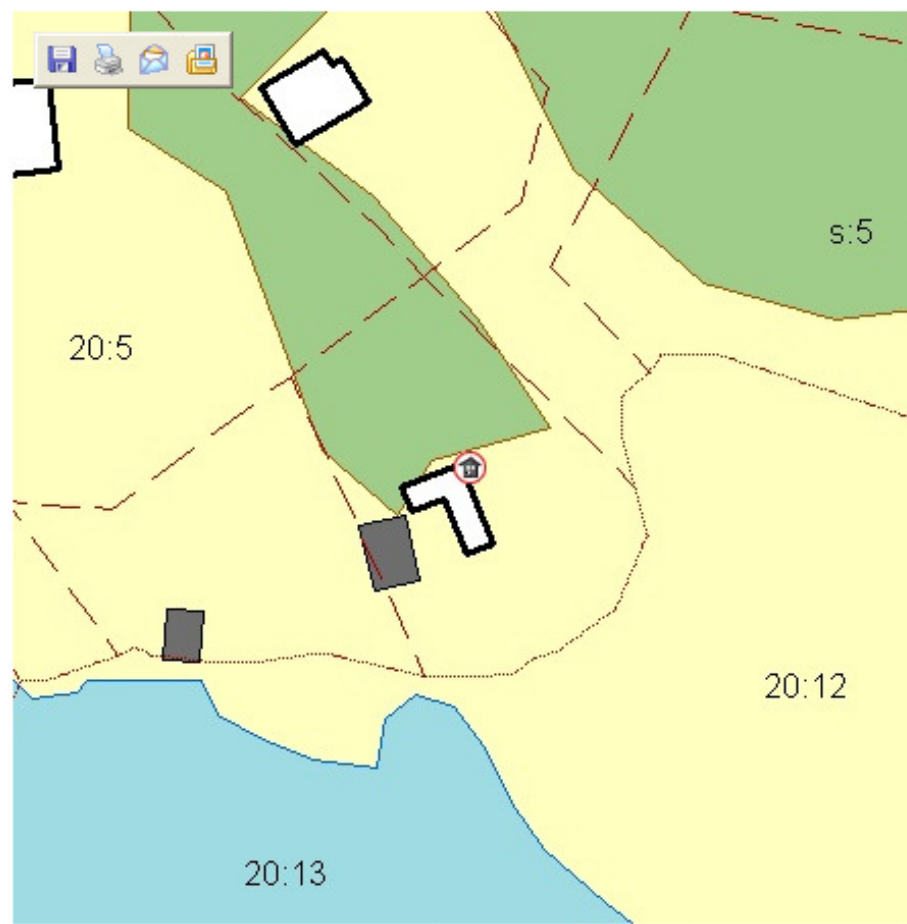
Aktualitetsdatum

inskrivningsdele

2008-06-0



Översiktskarta



Kartbilden ovanför har inte rättsverkan. Mer korrekta tomtkartor kan finnas i akter under rubrikerna "Åtgärd" och "Rä

