



Agency for Land Relations and Cadastre of Moldova



INVITATION FOR THE EUREF2011 SYMPOSIUM IN CHISINAU, REPUBLIC OF MOLDOVA


Dr. Ing. Maria Ovdii
Head Department of Geodesy, Mapping & GIS
ovdii@agency.cadastre.md

EUREF Symposium 2010 – June 2–5, Gävle, Sweden



Invitation

- Idea of hosting EUREF symposium in Moldova initially was discussed in London during EUREF2007 symposium
- Official invitation letter from Alexandr Bannicov – General Director of Land Relations and Cadastre Agency was sent to the EUREF chair and secretary in March 2009

AGENȚIA RELAȚII PUNCIARE ȘI CADASTRU A REPUBLICII MOLDOVA		AGENCY FOR LAND RELATIONS AND CADASTRE OF THE REPUBLIC OF MOLDOVA
<small>2005, or. Chișinău, str. Pușkin, 47 tel. 21-22-44, fax 22-83-73 email: info@agency.cadastre.md www.arlc.gov.md</small>		<small>MD 2005, 47 Puschin Str., Chisinau Tel.: 21-22-44, Fax 22-83-73 email: info@agency.cadastre.md www.arlc.gov.md</small>

Nr. 58/6-07/485 03 03 2009

To: **Dr. Johannes IHDE,**
Chair EUREF
johannes.ihde@bkg.bund.de

CC: **Dipl. Ing. Helmut HORNIC,**
Secretary EUREF
hornik@dglf.bawg.de

Dr. Martin LIDBERG
Chair, NKG W.G. for Geodynamics EUREF
Martin.Lidberg@lm.se

Ref: EUREF Symposium 2010


Dear Mr. Ihde,

On behalf of the Agency for Land Relations and Cadastre of the Republic of Moldova I have a pleasure to inform you that it is a great honour for us to hosting the EUREF 2010 Symposium in Moldova.

Dr. Martin Lidberg, Chair, NKG W.G. for Geodynamics confirmed that if Moldova would like to have the 2010 Symposium, Sweden will step aside.

Please accept this Letter of invitation to hosting the EUREF 2010 Symposium in Moldova. In order to start to look for local arrangements, please inform about your decision. Thank you in advance.

Yours sincerely,

General Director  Alexandr BANNICOV

GENERAL DATA ABOUT MOLDOVA



- Population – 4,3 mln
- Total area – 33.000 km²
- Capital – Chisinau
- Properties – 5,7 mln





Why in Moldova

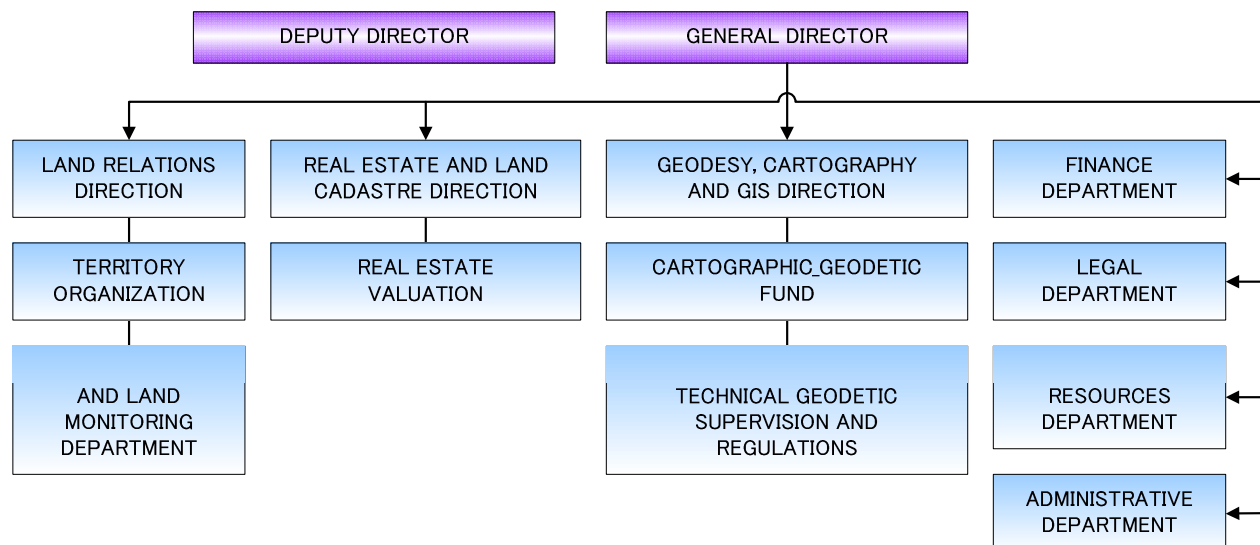
- Moldova is one of Eastern Partnership Countries fully implementing ETRS89 and actively participating in EuroGeographics Projects
- Easy access for Symposium participation of specialists from Eastern Partnership Countries (no visa, inexpensive transportation and accommodation, etc.)
- Experience in organizing international symposiums, conferences and workshops
- Nice conference and accommodation facilities in the central part of Chisinau, capital city of Republic of Moldova
- Beautiful touristic attractions (old monasteries, huge vineyards, etc.)



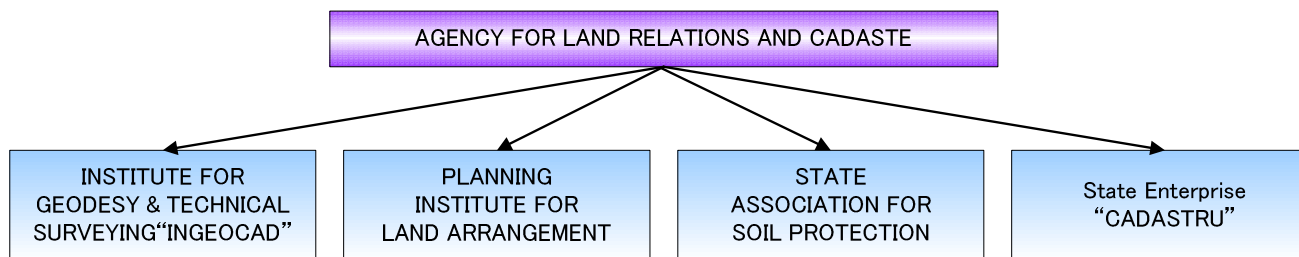


Agency for Land Relations and Cadastre of the Republic of Moldova

STRUCTURE OF THE CENTRAL BODY OF THE AGENCY FOR LAND RELATIONS AND CADASTRE OF THE REPUBLIC OF MOLDOVA



INSTITUTIONS SUBORDINATED TO THE STATE AGENCY FOR LAND RELATIONS AND CADASTRE OF MOLDOVA





Agency for Land Relations and Cadastre of the Republic of Moldova

- In March 1999, a new National Coordinate System MOLDREF99 based on the World Geodetic System (WGS-84) and UTM projection, with customized zone parameters, replaced the original Soviet coordinate system SK-42. Further on, ALRC has established the connection of the National Geodetic Network with the European Geodetic Frame EUREF.
- There are 1 750 employees engaged in ARFC and its 4 subordinated Institutes.



Agency for Land Relations and Cadastre of the Republic of Moldova

International cooperation

- **Starting with 1992, the Republic of Moldova through ALRC is a member of Intergovernmental Council for Geodesy, Mapping, Cadastre and Remote Sensing.**
- **1996 – 2000 Agreements of cooperation with Authority of Geodesy, Mapping and Cadastre of following countries: Ukraina, Byelorussia, Romania, Azerbaidjan**
- **2001- member of EuroGeographics**
- **2007 ARFC - INSPIRE as LMO (Legally Manadated Organization)**
- **2008 – member of EUPOS**
- **2006 -2009 Agreement of cooperation with Statens Kartverk, Norway**
- **ESRI/ GSDI Global Mapping Grand (2003)**
- **GSDI Programme for small Grand/ Standardization of Geospatial Data (2007)**

Conference facilities

Republic Palace





Accommodation facilities





Touristic attractions

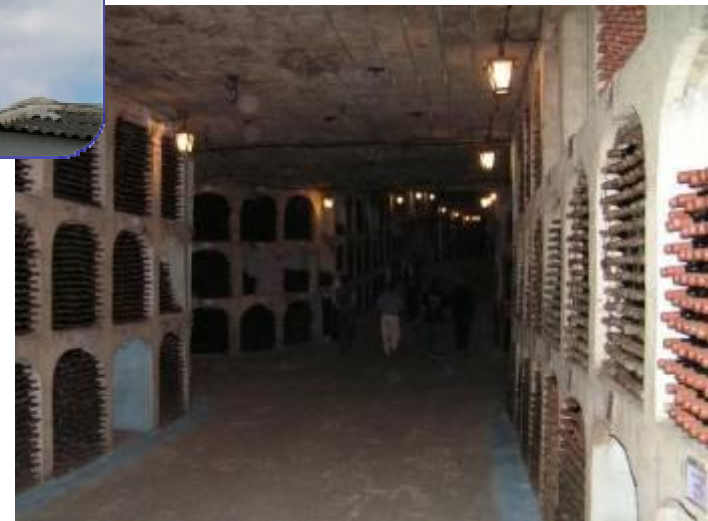
Cricova Winery





Tourist attractions

Milestii Mici Winery





Tourist attractions

Capriana Monastery





Tourist attractions





Agency for Land Relations and Cadastre of Moldova



Contact Information:

Dr. Ing. Maria Ovdii
Head Department of Geodesy,
Mapping & GIS

47, Puschin Str. Chisinau, MD-2005
Tel.+ 37322 881270
Fax.+ 37322 226373
www.arfc.gov.md