



Schweizerische Eidgenossenschaft
Confédération suisse
Confederazione Svizzera
Confederaziun svizra

armasuisse
Swiss Federal Office of Topography swisstopo




1. EUREF – EUMETNET

2. EU Railway Project SCO-OP

E. Brockmann



GNSS-meteorology within EUREF

- Collaboration EUREF with EUMETNET  **EUMETNET**
The Network of European Meteorological Services
 - MoU signed in London, June 2007
 - data exchange between the two communities
 - usage of radio sonde (since April 2008) and synoptic observations (since June 2008) for geodetic scientific use
- Access of meteorological data
 - download via a password-protected ftp server
 - to get a login/password:
 - contact **Henrik Vedel** by e-mail [hev@dmi.dk]
 - sign a “condition of use” form (usage for non-commercial applications)



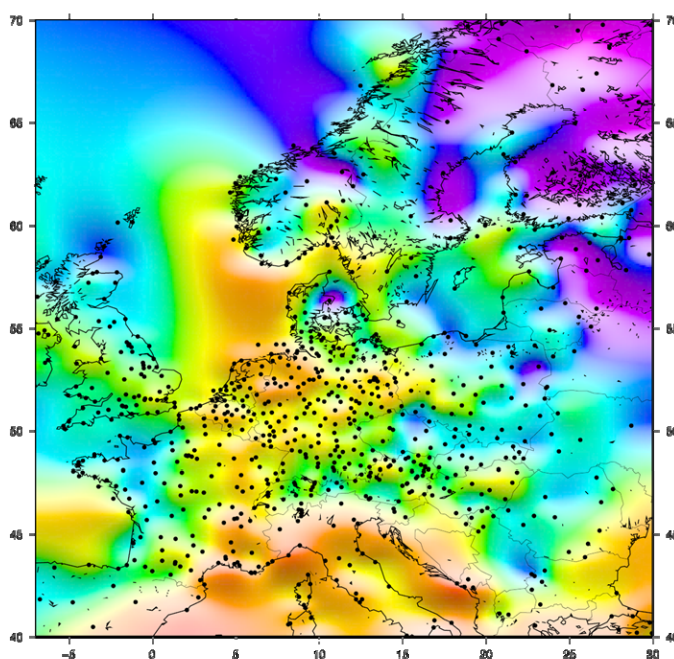
Radiosonde - EPN Collocation

The EUREF – EUMETNET Collaboration: First Experiences and Potential Benefits, E. Pottiaux, E. Brockmann, W. Soehne, C. Bruyninx

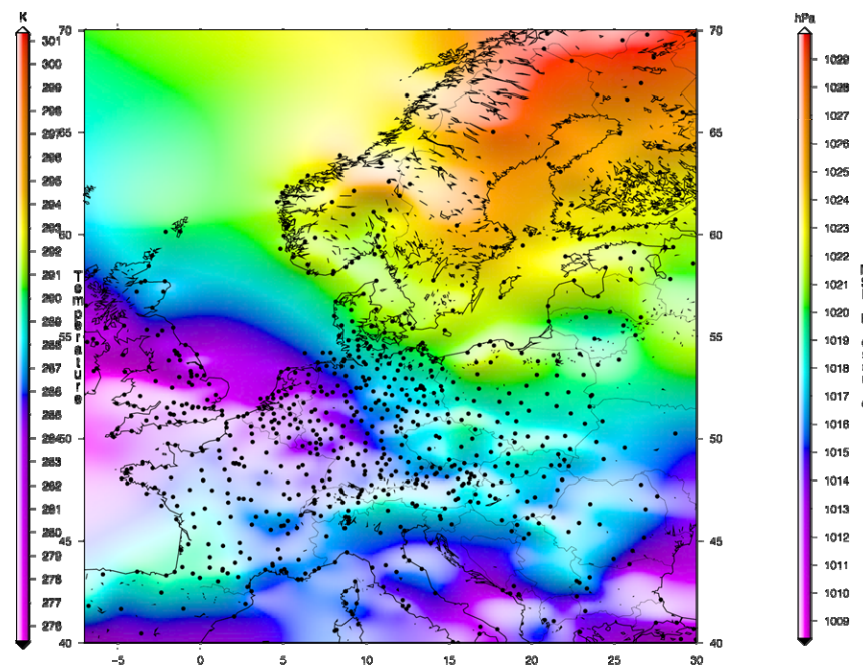




Synoptic data: Example of 1280 synoptic observations recorded on the 29th July 2008 at 00 UT



Temperature



Pressure

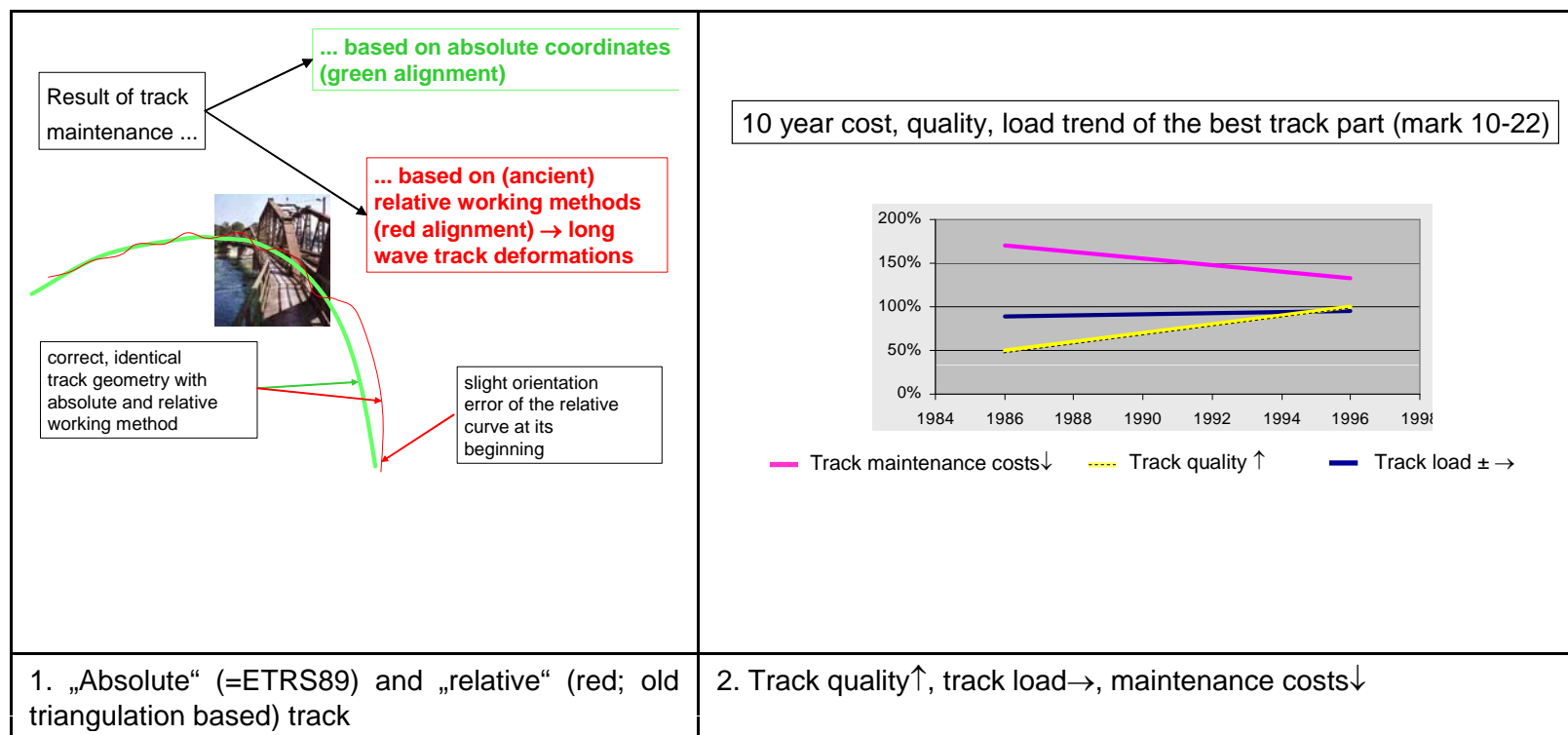


GNSS-meteorology within EUREF (2)

- several EPN AC's have a focus on NRT processing for monitoring / meteorology (see LAC Workshop in Frankfurt, October 22-23)
- this (!) week (7.Nov.08): E-GVAP GNSS expert meeting in Copenhagen (Wolfgang Söhne + Jan Dousa + several persons from the EPN ACs)

Step towards COOrdinate driven data Processing: SCOOP

- Collaboration of railway companies to adapt ETRS89 for the track description and storage in the databases
- Idea:





Step towards COOrdinate driven data Processing: SCOOP (2)

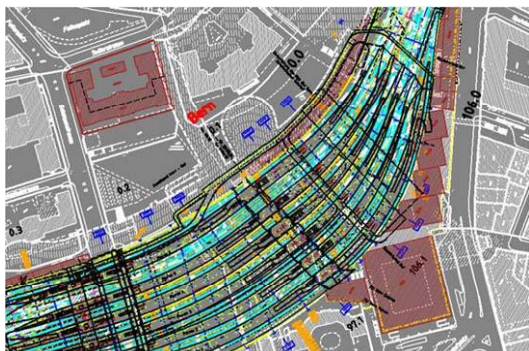
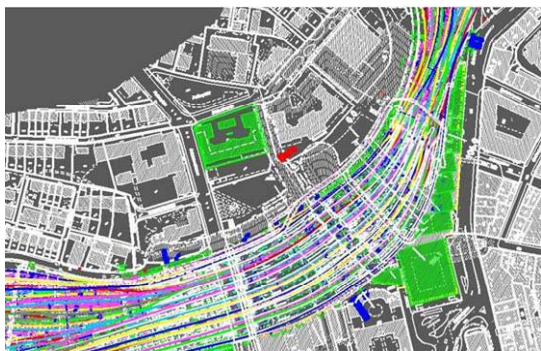
- FP-7 project submitted Sep. 2008
- Participants: CH, D, F

<i>Participant No</i>	<i>Participant organisation</i>	<i>Company</i>	<i>Country</i>	<i>Town</i>
1	Schweizer Bundesbahn, Coordinator	SBB	Switzerland	Bern
2	Die Bahn	DB	Germany	Frankfurt
3	A further railway. To be designed after project acceptance (see also chapter 2.3)			
4	Institut Géographique National	IGN	France	Paris
5	Eidgenössische Technische Hochschule Zürich	ETHZ	Switzerland	Zürich

- Geodesy: IGN (F. Duquenne)
- Second-level support EUREF (E. Brockmann)



Step towards COOrdinate driven data Processing: SCOOP (3)

 A map showing a dense network of colored lines representing railway tracks. The lines are color-coded in various shades of green, yellow, and red, indicating different track types or statuses. The map is overlaid on a grayscale aerial photograph of a city area.	 A map showing a dense network of colored lines representing overhead contact lines. The lines are color-coded in various shades of green, yellow, and red, indicating different track types or statuses. The map is overlaid on a grayscale aerial photograph of a city area.
Database layer: Layer track	Database layer: overhead contact line

- Huge databases to be “transformed” in Europe
- Contribution of EUREF / NMAs welcome
- Jan. 09 decision, if project is accepted