

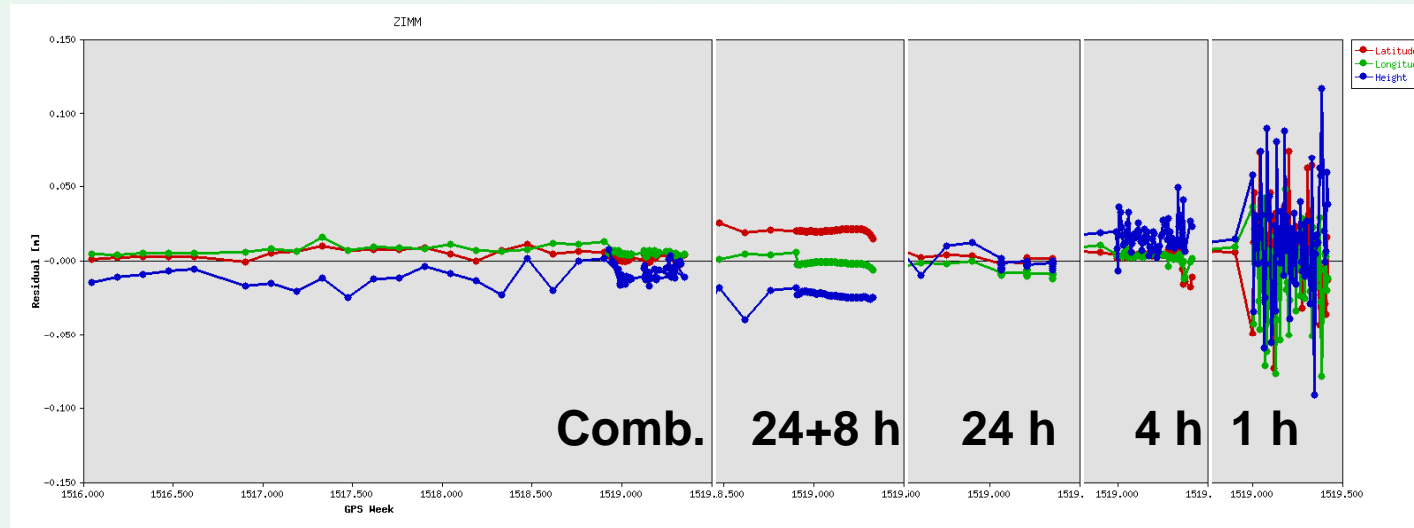


# EPN-Monitoring

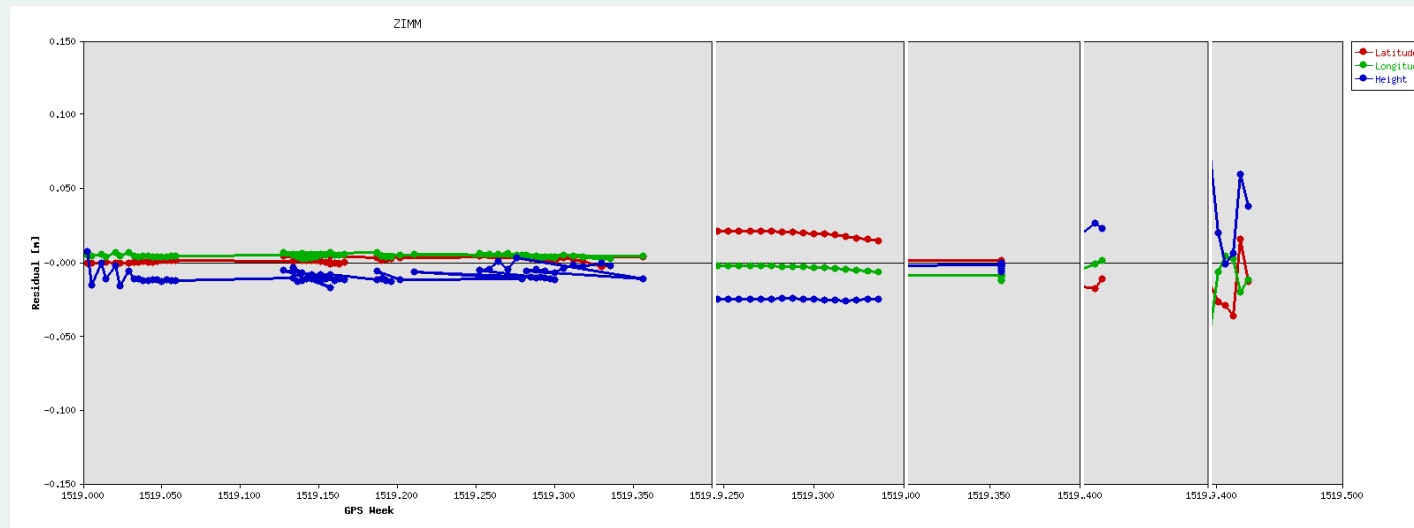
Heinz Habrich

- Combination of hourly and daily EPN solutions for event identification
- Non-homogeneous LAC solutions accepted
- Establishment of warning/information system

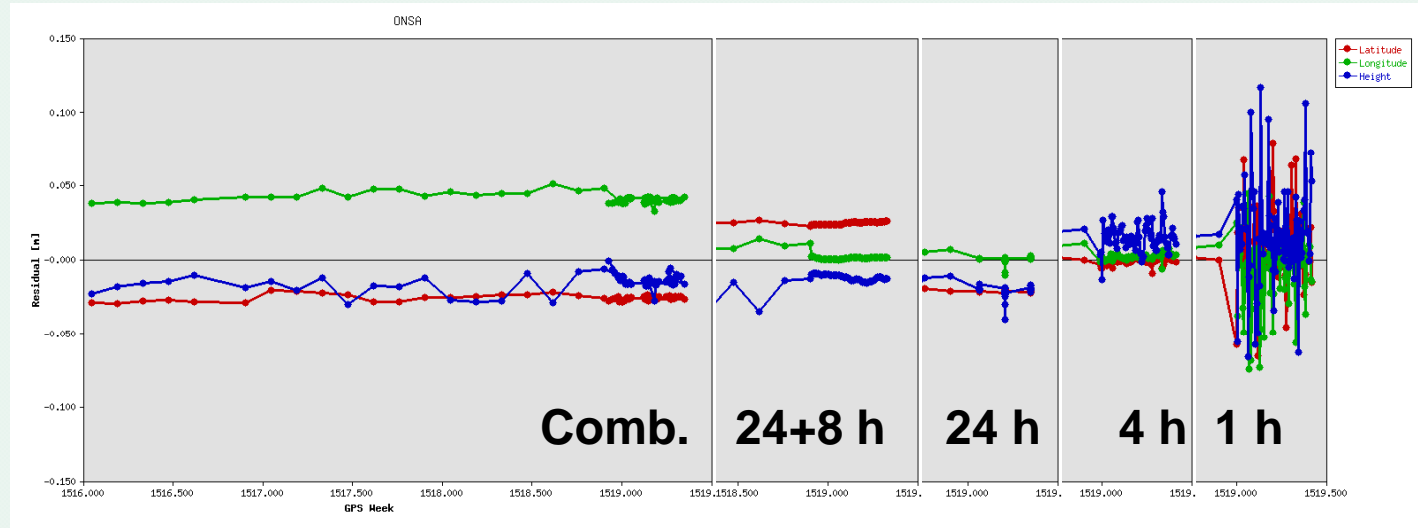
3 Weeks



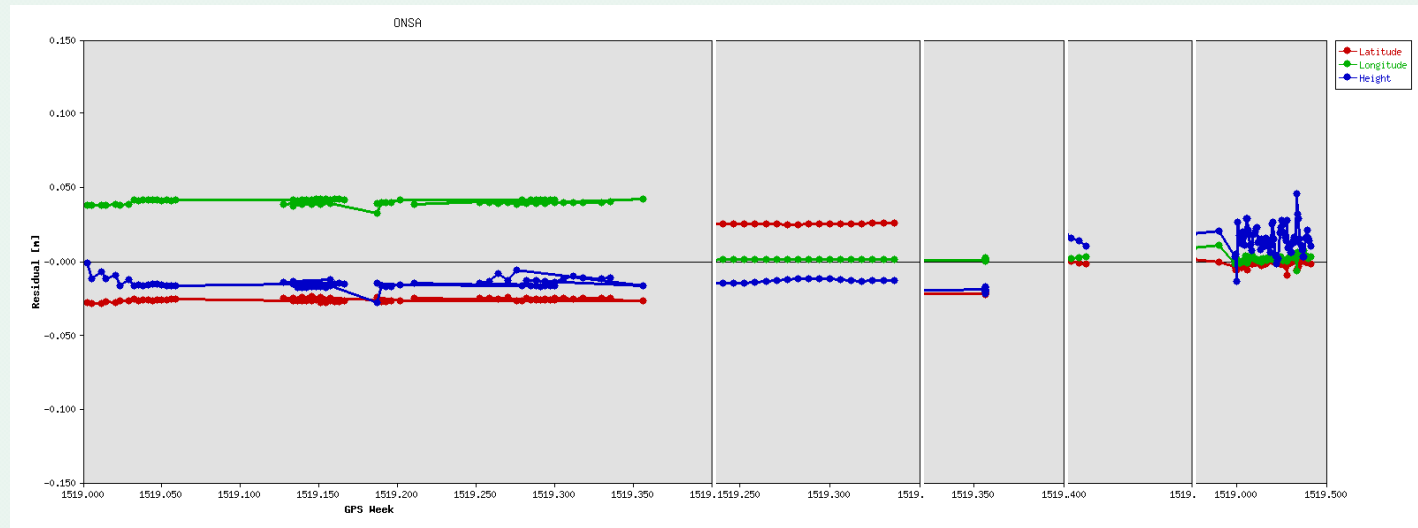
3 Days



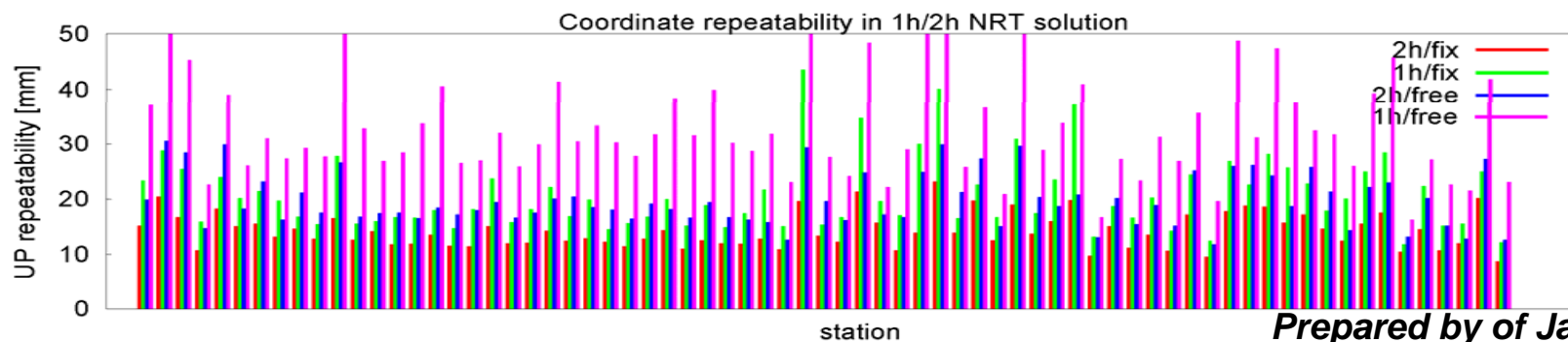
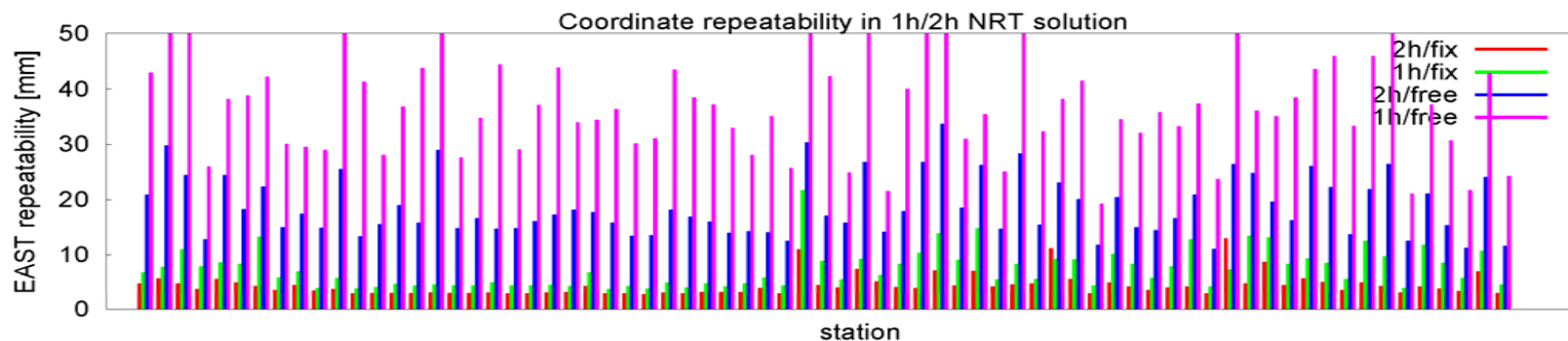
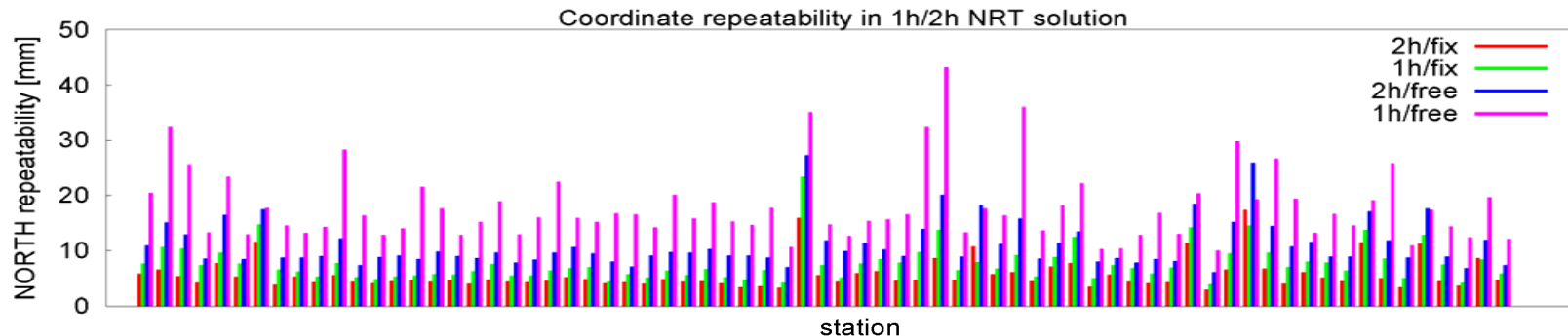
3 Weeks



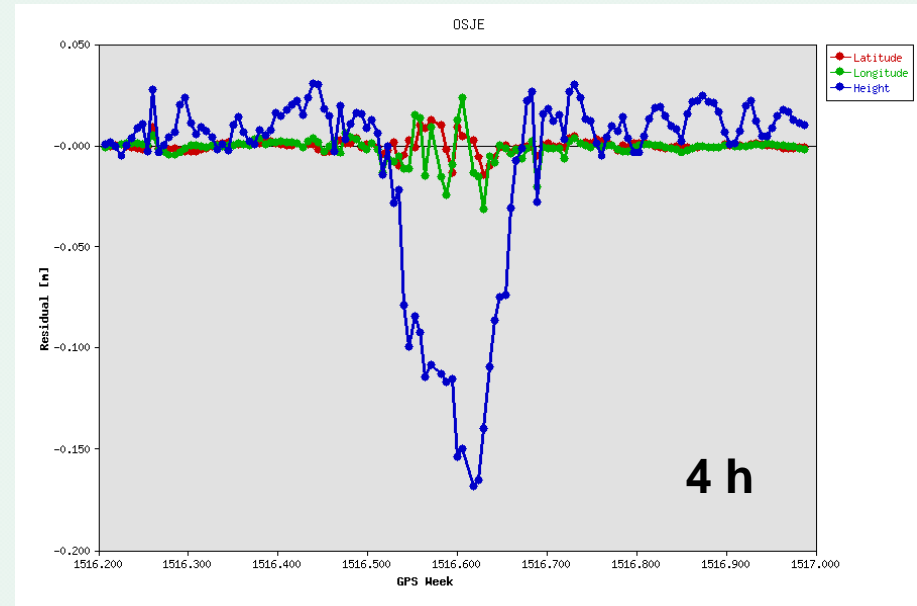
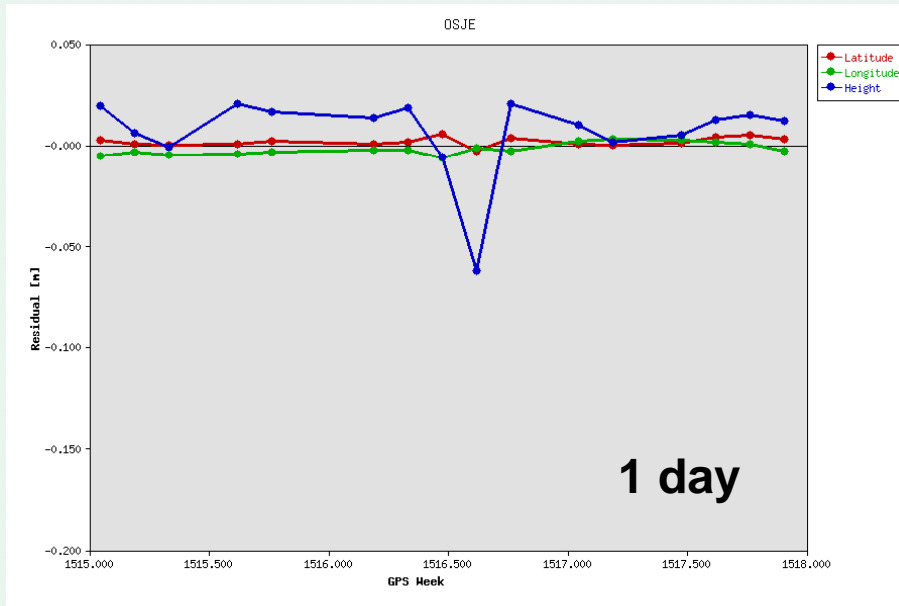
3 Days



# GOP 14-day combination - Repeatability RMS for approx. 70 stations -



*Prepared by of Jan Dousa*

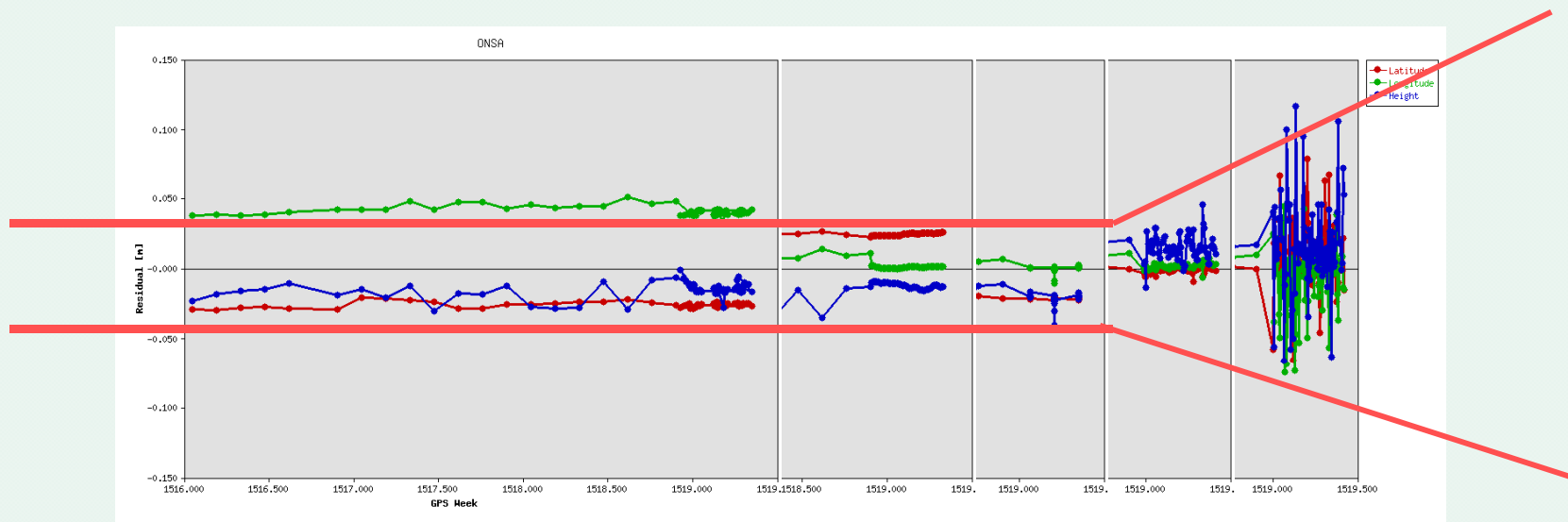


- shorter delay
- more significant
- more detailed

**Snow fall in Osijek on January 29, 2009**

# Testing for Discontinuities and Outliers

- How useful is a „combination“ vs. „separate inspection“?
- Consideration of observation window for thresholds



Test quantity depends on length of observation window:  $\delta_t \approx a \cdot \frac{1}{Win_{obs}}$

- Generation of hourly messages (like „green, yellow or red“) for current state of EPN stations
- Evaluation of test quantity
- Promotion for contribution of more LACs